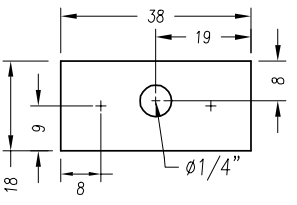
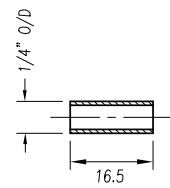


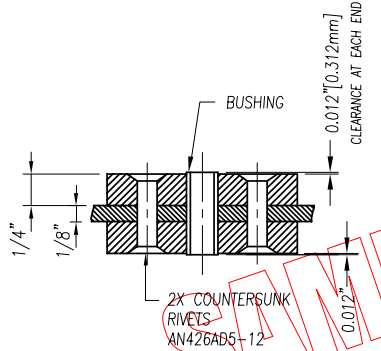
① **AILERON BELLCRANK**
 $t=1/8"$ (2 REQ'D)



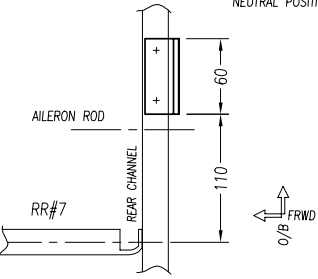
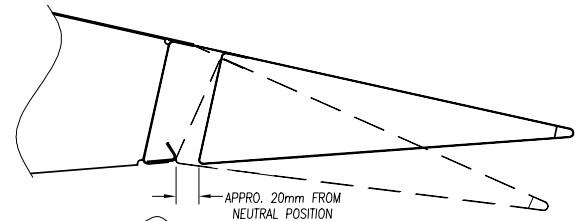
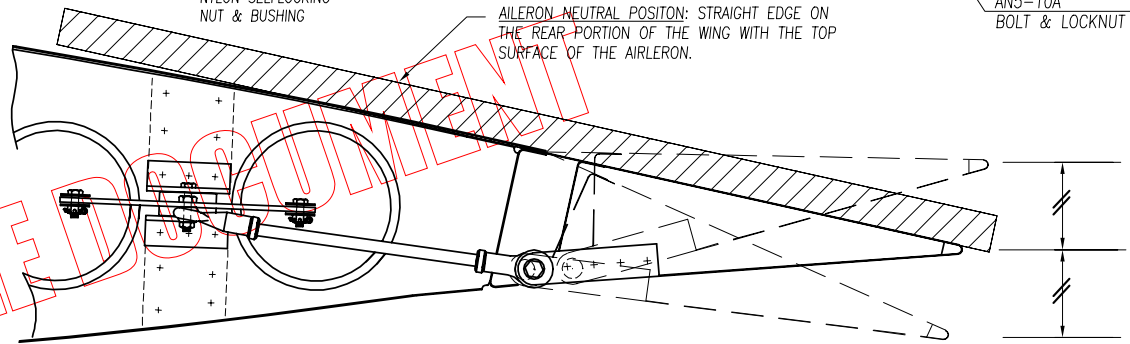
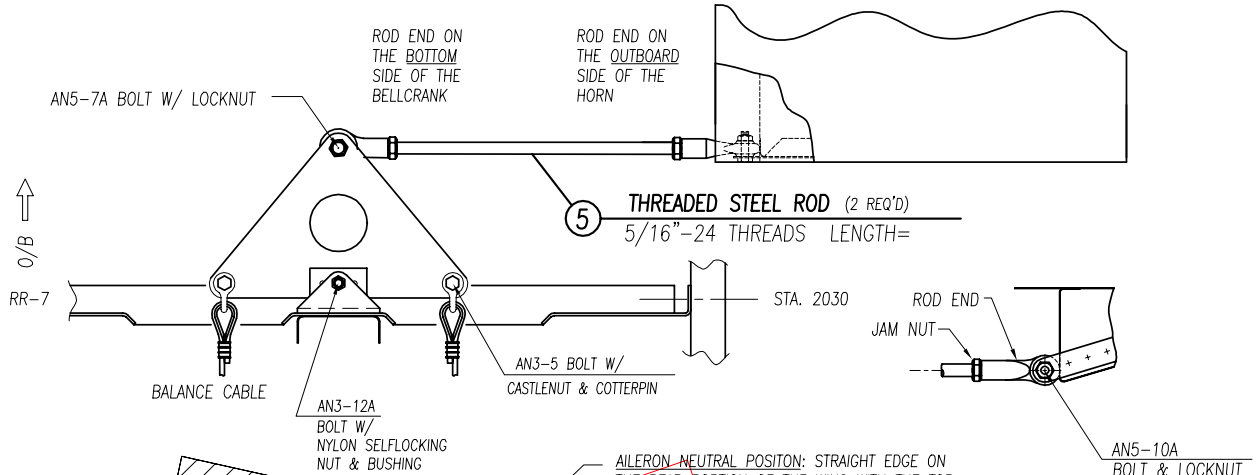
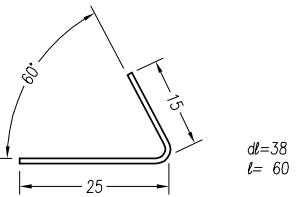
② **SPACER**
 $t=1/4"$ (4 REQ'D)



③ **BUSHING** (2 REQ'D)
 $\phi 1/4"$ O.D. x .028" WALL 4130 TUBE
 4130 ROUND SEAMLESS TUBE



④ **AILERON STOPS**
 $t=.040"$ (2 REQ'D)



AILERON STOP:
 RIVET A PIECE OF ANGLE TO THE BOTTOM FLANGE OF THE REAR CHANNEL OUTBOARD OF REAR RIB #7

AILERON DEFLECTION FROM NEUTRAL:
 UP 11.5° +/- 1°
 (MAX 65mm, MINI 55mm)
 DOWN 11.5° +/- 1°
 (MAX 65mm, MINI 55mm)