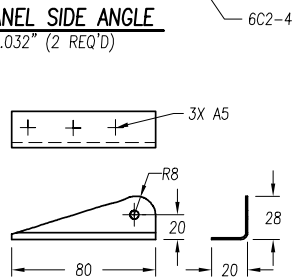
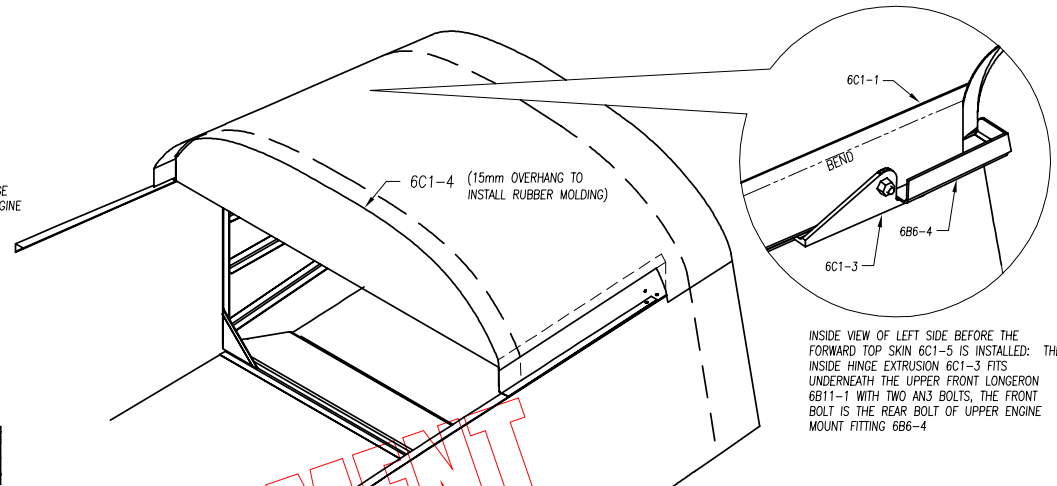
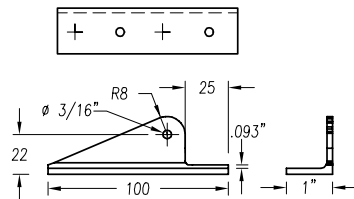


1 PANEL SIDE ANGLE
t=.032" (2 REQ'D)

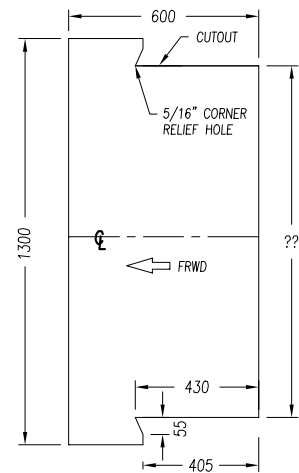


2 OUTSIDE HINGE ANGLE
t=.040" (2 REQ'D)

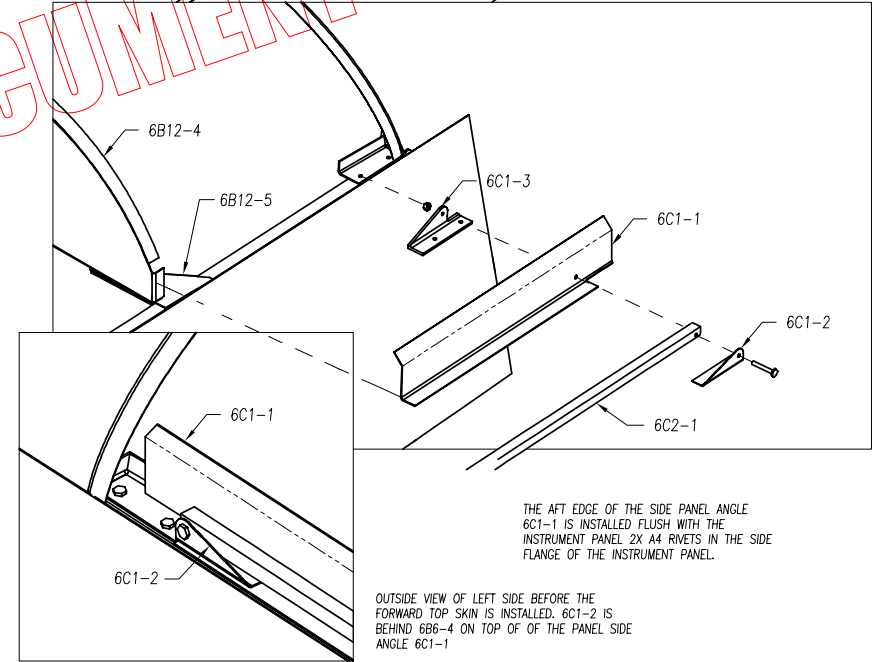
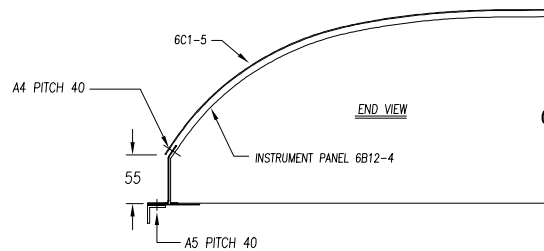
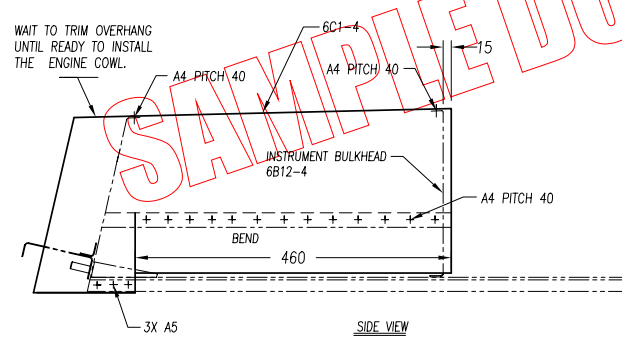
3 INSIDE HINGE EXTRUSION
EXT. 1-1/2"x1"x1/8" (2 REQ'D)



INSIDE VIEW OF LEFT SIDE BEFORE THE FORWARD TOP SKIN 6C1-5 IS INSTALLED: THE INSIDE HINGE EXTRUSION 6C1-3 FITS UNDERNEATH THE UPPER FRONT LONGERON 6B11-1 WITH TWO AN3 BOLTS, THE FRONT BOLT IS THE REAR BOLT OF UPPER ENGINE MOUNT FITTING 6B6-4



4 FORWARD TOP SKIN
600x1300 t=.025" (1 REQ'D)



THE AFT EDGE OF THE SIDE PANEL ANGLE 6C1-1 IS INSTALLED FLUSH WITH THE INSTRUMENT PANEL 2X A4 RIVETS IN THE SIDE FLANGE OF THE INSTRUMENT PANEL.

OUTSIDE VIEW OF LEFT SIDE BEFORE THE FORWARD TOP SKIN IS INSTALLED. 6C1-2 IS BEHIND 6B6-4 ON TOP OF OF THE PANEL SIDE ANGLE 6C1-1