

Fuel system (fuel section K introduced in XL 2st edition 1st. printing Jan.23, 2003)

6-K-1 Fuel routing up slope through nose ribs. Ref 6-W-5

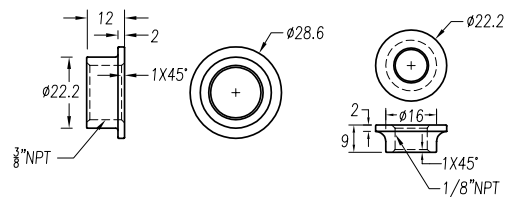
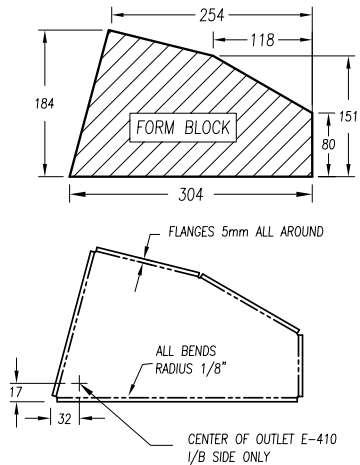
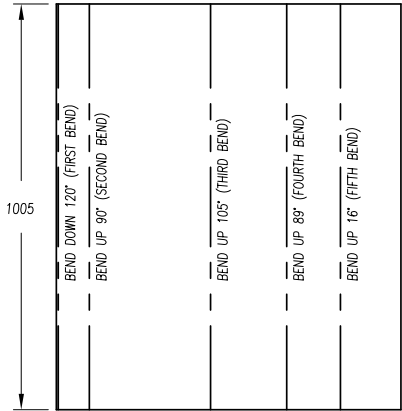
6-K-2 center sole with 3 way fuel selector

Replaces 1st edition drawings 6-W-11, 6-B-24, 6-S-1

Auxiliary tanks

6-WKO-1 use 5 way fuel selector on center console

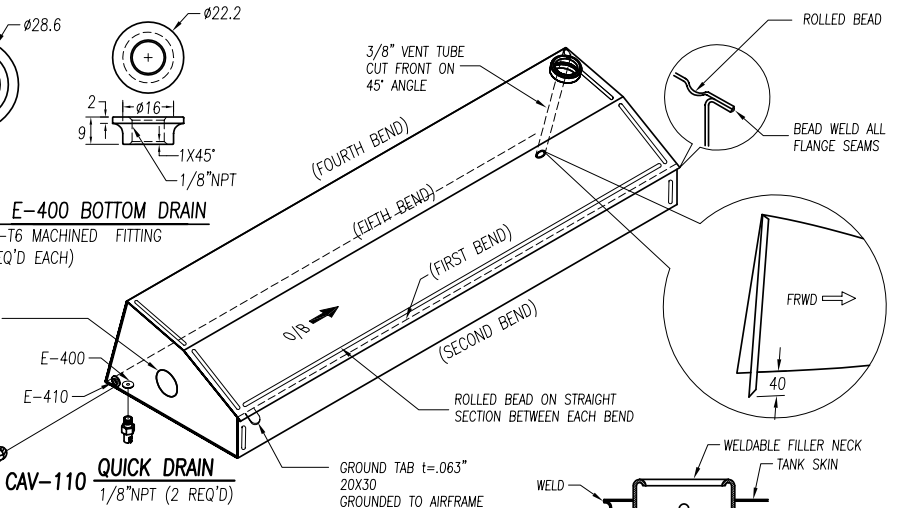
Replaces 1st edition drawing 6-W-13



P/N E-410 SIDE OUTLET
6061-T6 MACHINED FITTING (2 REQ'D EACH)

P/N E-400 BOTTOM DRAIN
6061-T6 MACHINED FITTING (2 REQ'D EACH)

APPROXIMATE LOCATION OF FUEL TANK SENDER (POSITIONED IN LINE WITH THE LIGHTENING HOLE IN THE NOSE RIBS)



FUEL TANK SKIN
t=.032" 6061-T6 (1L+1R REQ'D)

FUEL TANK ENDS
t=.032" 6061-T6 (2L+2R REQ'D)

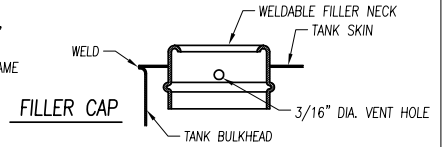
DX2021 FINGER SCREEN
16 MESH/INCH 3/8" NPT (2 REQ'D)

F125-4B NIPPLE COUPLER
1/4" HOSE 1/4" NPT PIPE

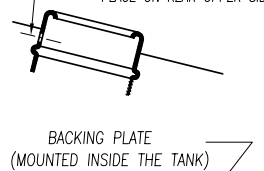
FHC504TB HOSE CLAMPS
5/16" TO 5/8", QTY=2

FFLH-4 FUEL LINE
1/4" 1/D

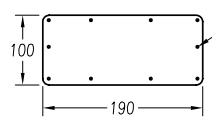
1 LE TANK
WELDED ASSEMBLY (1L+1R REQ'D)



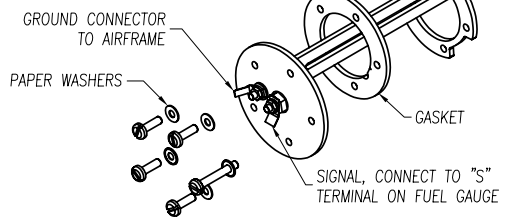
3/16" DIA. HOLE JUST UNDER THE SKIN PLACE ON REAR UPPER SIDE



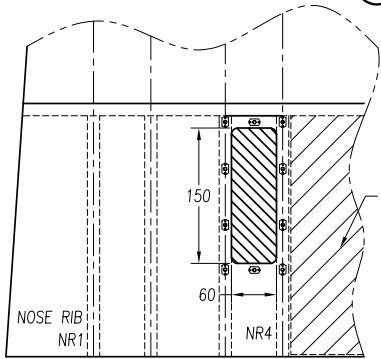
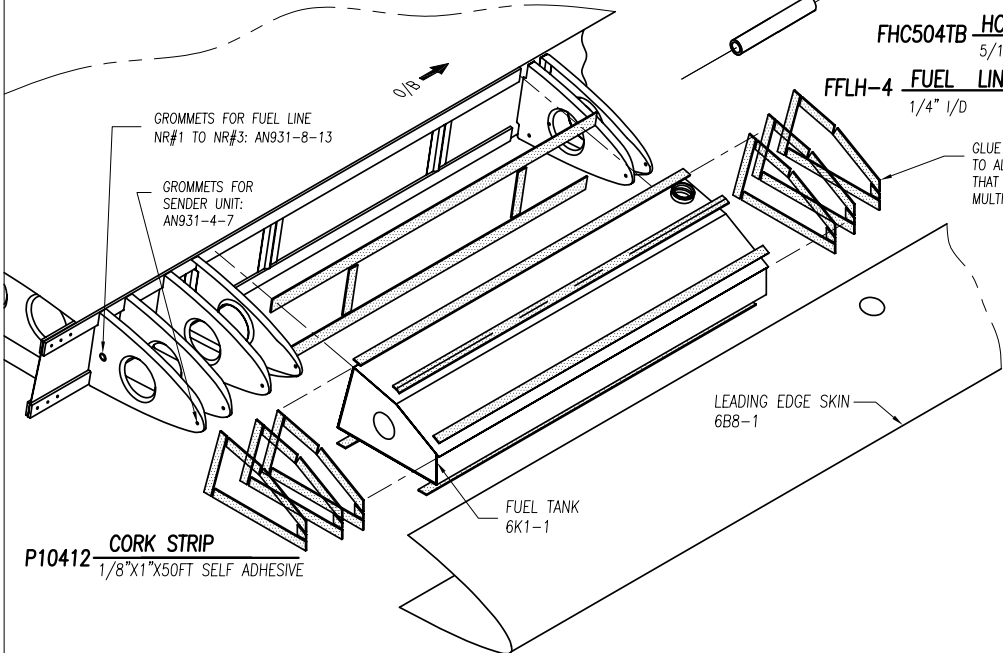
2 FINGERSCREEN ACCESS COVER
t=.040" 6061-T6 (2 REQ'D)



10 MACHINE SCREWS AN525-10R7
NUT PLATE MS21075-L3 (WITH 3/32" RIVETS TO WING)
6K1-2 OVERLAPS ON OUTSIDE OF BOTTOM SKIN 6WB-1



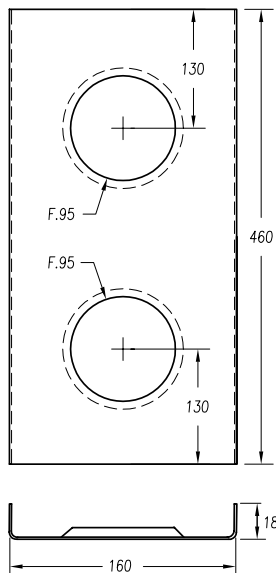
226-002 FUEL SENDER BACKING PLATE
10-180 OHMS (2 REQ'D)



VIEW FROM BOTTOM OF WING CUTOUT IN BOTTOM SIDE OF 6WB-1 FOR FINGERSCREEN ACCESS

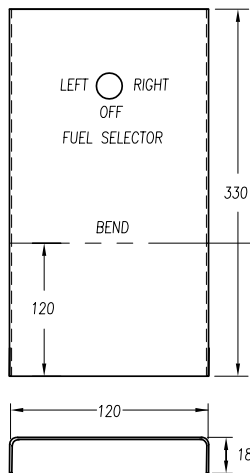
ZODIAC
CH 601 XL

LEADING EDGE WING TANKS	6-K-1
copyright © 2002 CHRIS HEINTZ zenithair.com	DATE: 01/03



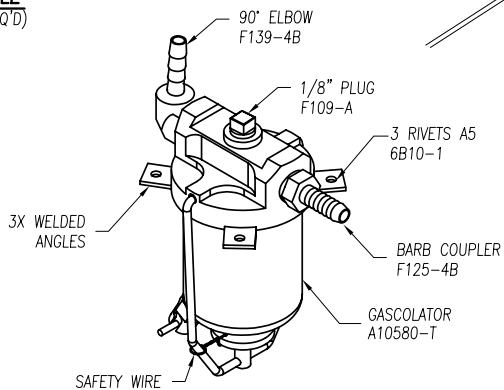
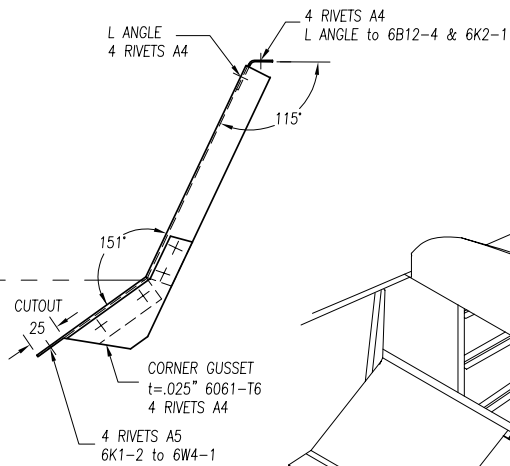
L=460
dI=193

1 **SUPPORT CHANNEL**
t=.025" 6061-T6 (1 REQ'D)

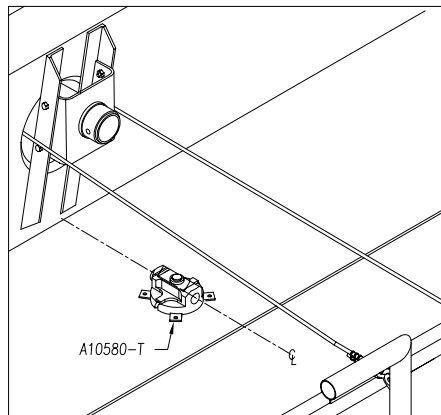
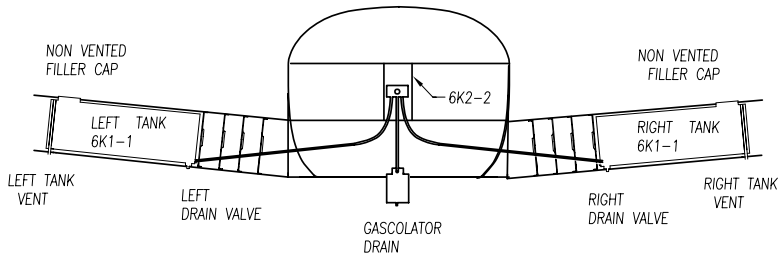
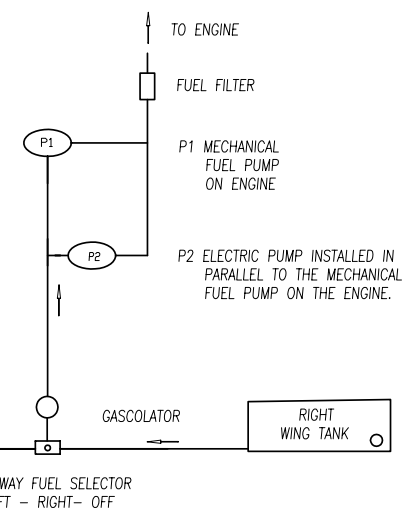
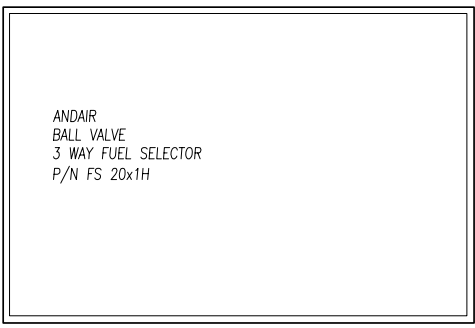


L=330
dI=153

2 **CENTER CONSOLE**
t=.025" 6061-T6 (1 REQ'D)



A10580-T FUEL GASCOLATOR W/ WELDED TABS
(1 REQ'D)

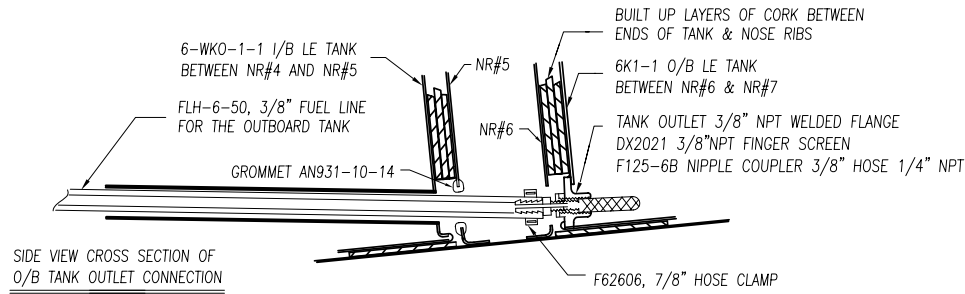


LOCATION OF GASCOLATOR ON CABIN FLOOR 6B10-1 ON AIRCRAFT CENTER LINE

ZODIAC
CH 601 XL

CENTER CONSOLE
3 WAY FUEL SELECTOR
GASCOLATOR
copyright© 2002 CHRIS HEINTZ zenithair.com

6-K-2
DATE: 01/03



SIDE VIEW CROSS SECTION OF O/B TANK OUTLET CONNECTION

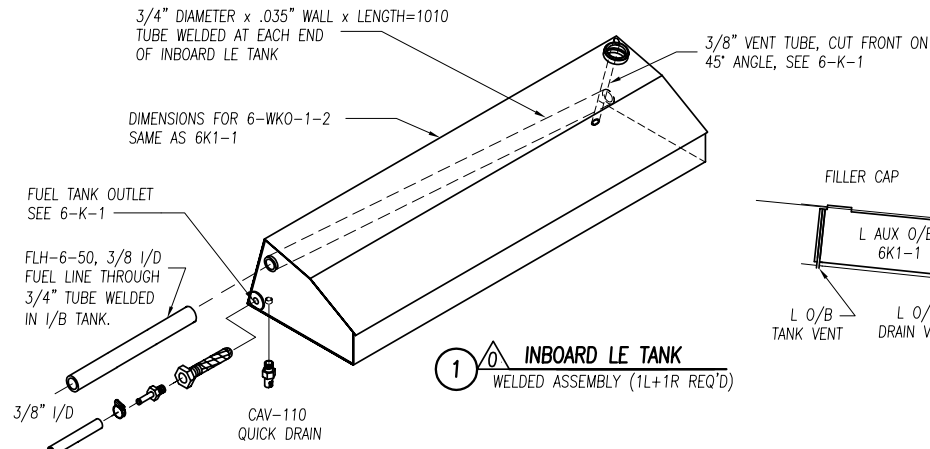
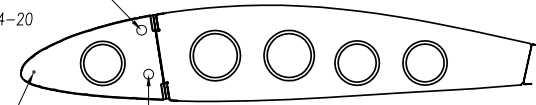
GROMMET AN931-10-14 FOR 3/8" I/D FUEL LINE
 HORIZONTAL DISTANCE = 45 (REF. SPAR WEB)
 TABLE OF VERTICAL DISTANCE (REF. BOTTOM OF NR):
 NR#1 = 185
 NR#2 = 176
 NR#3 = 162
 NR#4 = 150, GROMMET AN931-14-20
 NR#5 = 32
 NR#6 = 25 (NO GORMMET)

GORMMETS IN NOSE RIB
 SEE 6-B-15 GORMMETS
 IN FUSELAGE SIDE SKINS

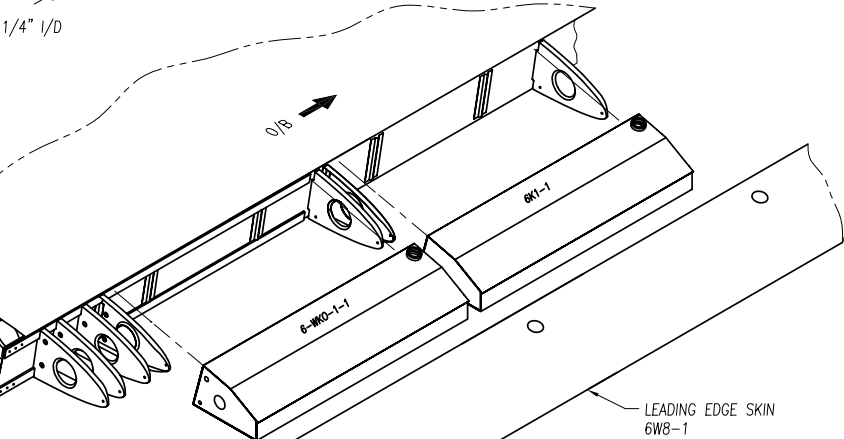
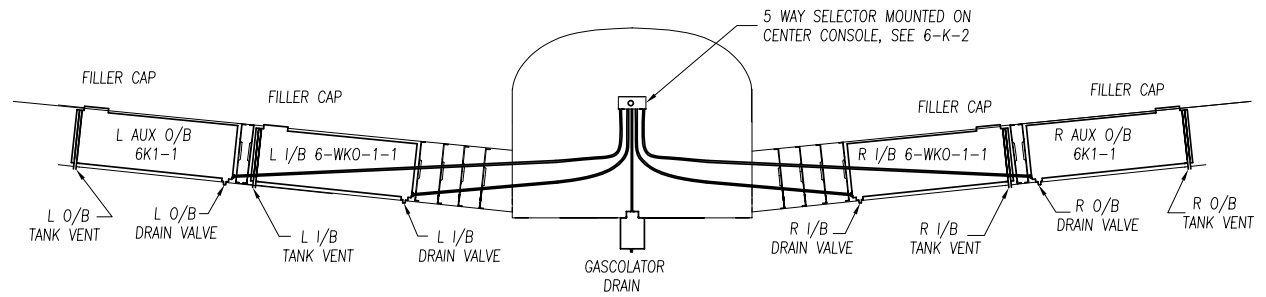
I/B = INBOARD
 O/B = OUTBOARD
 R = RIGHT
 L = LEFT
 AUX = AUXILIARY
 I/D = INSIDE DIAMETER
 NR = NOSE RIB 6-W-5

GROMMET AN931-4-7
 THROUGH TOOLING HOLE
 WIRE FOR FUEL SENDER UNIT

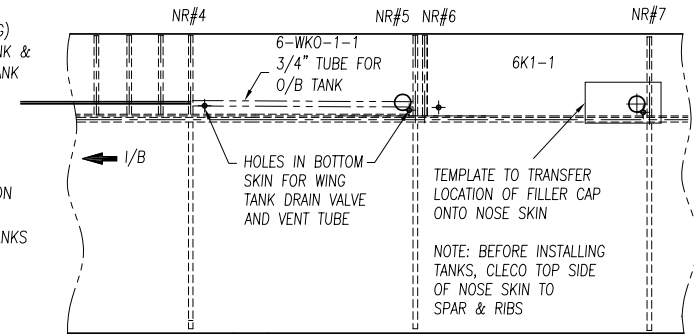
GROMMET AN931-8-13 FOR
 1/4" I/D FUEL LINE NR#1 TO NR#3
 FOR I/B TANK, SEE 6-W-5 TOOLING HOLE "C"



1 **INBOARD LE TANK**
 WELDED ASSEMBLY (1L+1R REQ'D)



FUEL LINES (RIGHT WING)
 1/4" I/D FROM I/B TANK &
 3/8" I/D FROM O/B TANK
 TO 5 WAY SELECTOR



FUEL MANAGEMENT

- 1) TAKE OFF AND LAND WITH SELECTOR ON LEFT OR RIGHT I/B TANK
- 2) IN CRUISE USE THE O/B AUXILIARY TANKS

FUEL SELECTOR

5 WAY FUEL SELECTOR ON CENTER CONSOLE 6K2-2

GASLOCATOR
 SEE 6-K-2

HOLES IN BOTTOM SKIN FOR WING TANK DRAIN VALVE AND VENT TUBE

TEMPLATE TO TRANSFER LOCATION OF FILLER CAP ONTO NOSE SKIN

NOTE: BEFORE INSTALLING TANKS, CLECO TOP SIDE OF NOSE SKIN TO SPAR & RIBS

ZODIAC
 CH 601 XL

AUXILIARY FUEL TANK OPTION
 5 WAY FUEL SELECTOR

6-WKO-1

copyright © 2002 CHRIS HEINTZ zenithair.com

DATE: 01/03