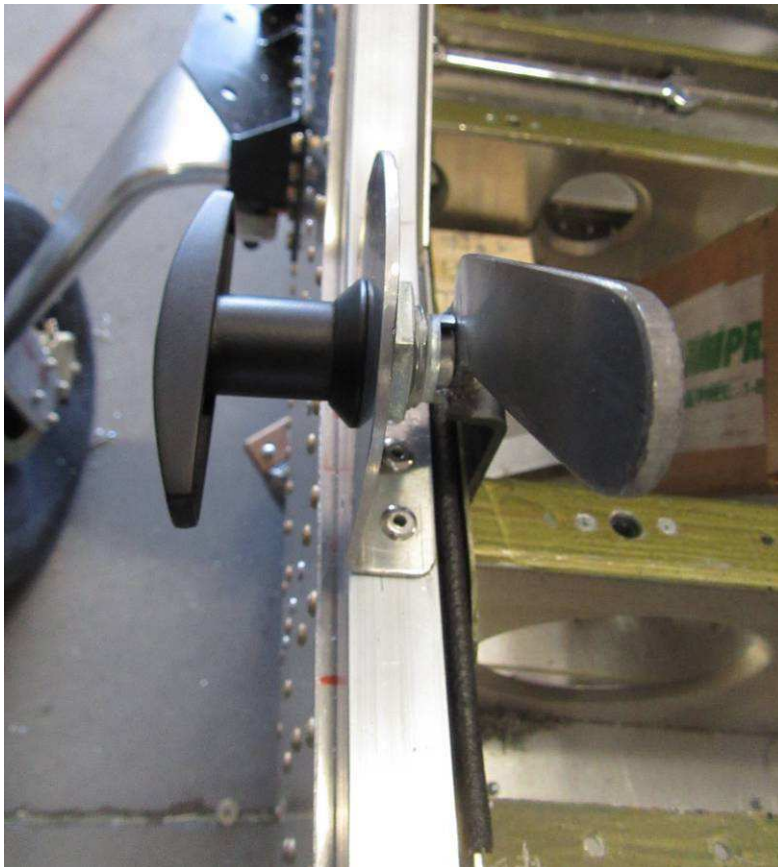


External handle assembly P/N 13376A33



Use loctite on the threads to hold the large nut and bolt in.
Do not over tighten the large nut.



To open, the inside handle rotates back.



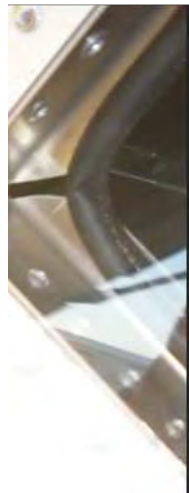
Bend the front corner of the sticker plate



Front latch.



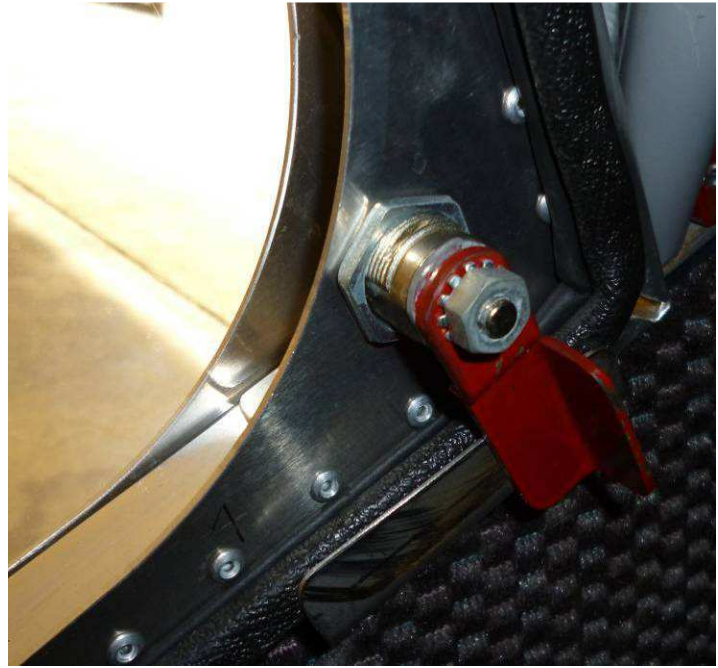
Installed on I/B gusset C75N1-9A



Front tricker plate C75N2-11A



Use Loctite on the threads.



Front latch closed



Door open





When the door is closed, the over-center position of the cylinder will draw the door against the fuselage. Photo shows with the latches open.



Door in the open position. The position of the cylinders is what keep the doors from touching the wing.



To remove the cylinder use a screwdriver to lift up the spring tab (do not remove) and pull back on the socket to free it from the ball.



2 rivets AS-5 on the front side
2 on the inboard side



9416K12	40 LB GAS SPRING
9416K86	BALL SOCKET FITTINGS

CAUTION: Only attempt to remove the cylinder with the door in the open position.

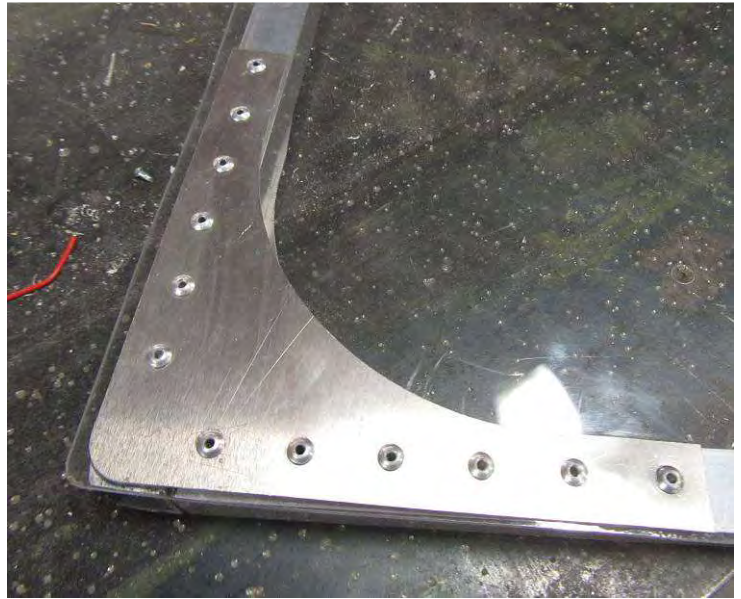
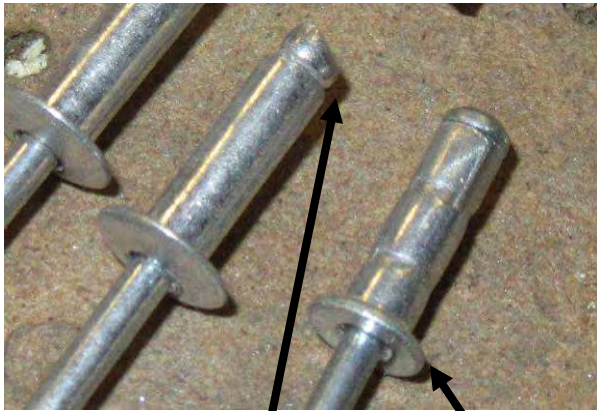


Photo shows extra rivets

Do not use Zenair rivets on the bubble.
Comparison of soft aluminum 1/8" rivets with the A4 rivets.

Note: the soft aluminum rivets have an aluminum shank. Used on the bubble and O/B gussets.





CC3251

3-1/4 SNAP VENT

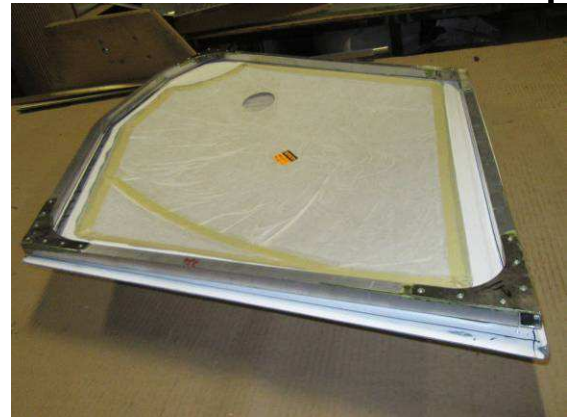
Snap vent – fits in 3-1/4” hole in the bubble. Check there are no sharp edged on the door.
Remove the metal spring, squeeze the flanges towards the center and insert through the hole from the outside. Re-install the spring.





Alternative bubble:
By removing the reinforcement bead on the 750 STOL fiberglass door, the bubble can be mounted to the aluminum frame.

Photo to show the position of the aluminum frame on the fiberglass door.



Fiberglass bubble on the aluminum door frame.

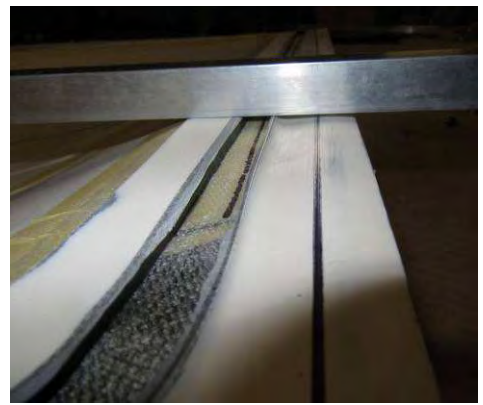


Photo of the STOL 750 fiberglass door with the reinforcement beat cut off. The lines outlines the position of the aluminum frame.

Additional trimming is required along the outer edge to allow the recess the door.



Flat area to mount door handle.