

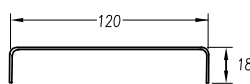
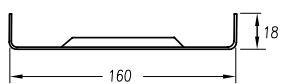
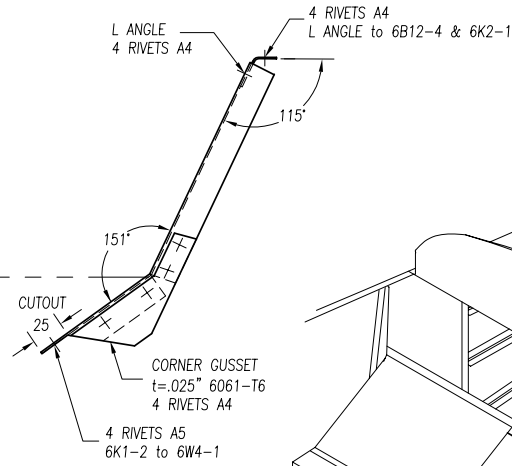
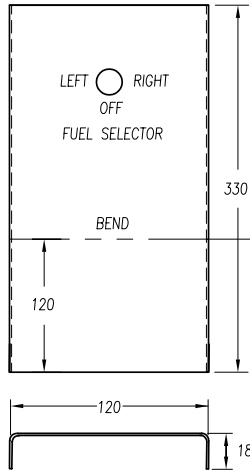
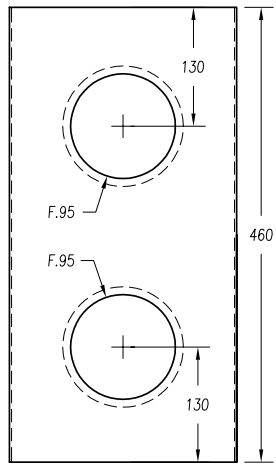
Auxiliary fuel system (1st edition XL drawings 2001 & 2002)

New drawing 6-W-13A (01/03) to replace text top right on drawing 6-W-13 (05/02) The "fuel management..."

6-W-13A shows a line gascolator at the lowest point in the fuel between the outlet on the tanks and the Andair 5 way fuel selector mounted on a center console 6K2-2

6-K-2 (drawing from the 2nd edition of the XL drawings 2003)
Shows a center console to mount fuel selector

Note: In the 2nd edition of the XL drawings 2003, the location of the grommets through the nose ribs Ref 6-W-5 routes the fuel on an upwards slope to the fuel selector on a center console.



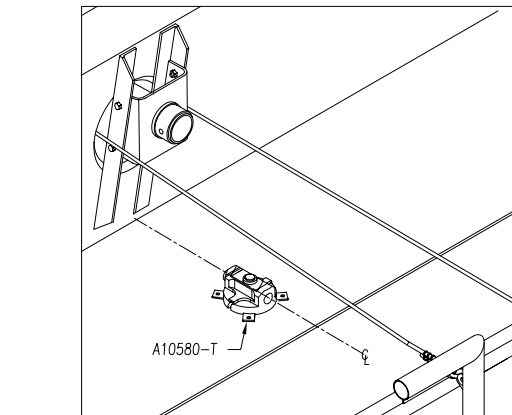
L=460
d1=193

L=330
d1=153

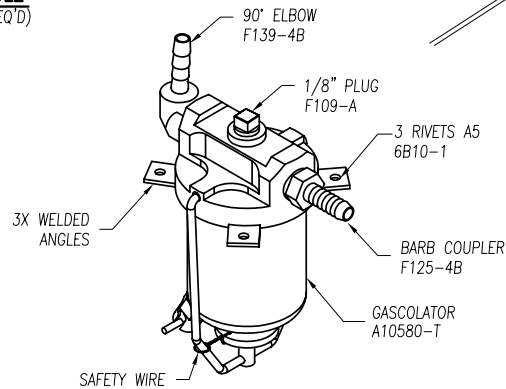
1 **SUPPORT CHANNEL**
t=.025" 6061-T6 (1 REQ'D)

2 **CENTER CONSOLE**
t=.025" 6061-T6 (1 REQ'D)

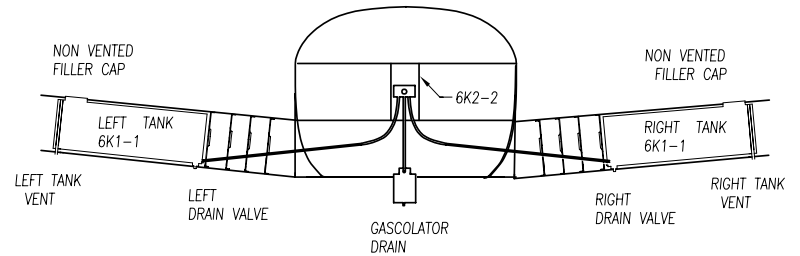
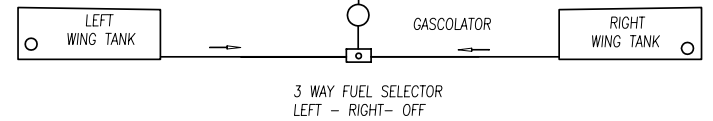
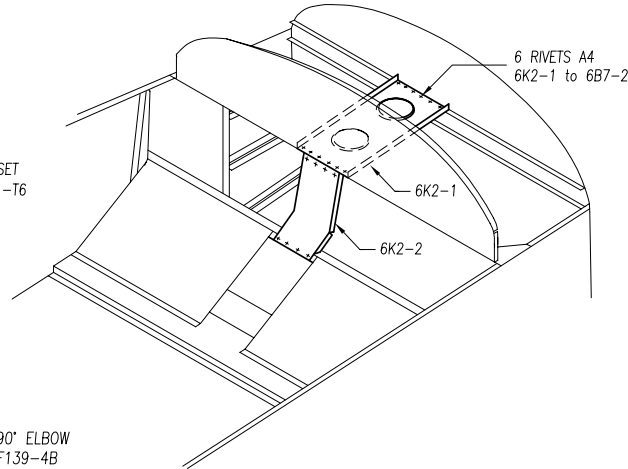
ANDAIR
BALL VALVE
3 WAY FUEL SELECTOR
P/N FS 20x1H



LOCATION OF GASCOLATOR
ON CABIN FLOOR 6B10-1
ON AIRCRAFT CENTER LINE



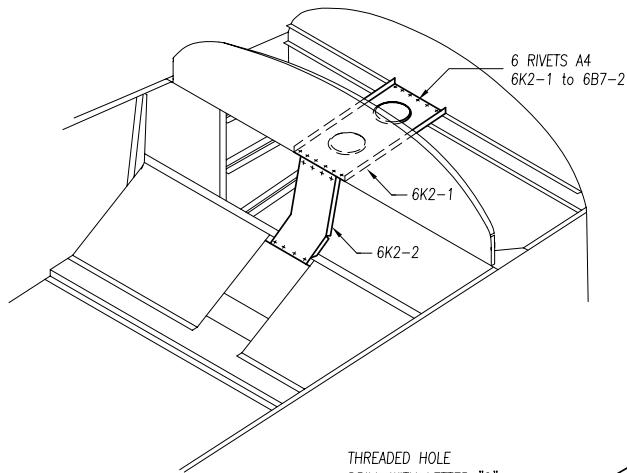
A10580-T **FUEL GASCOLATOR W/ WELDED TABS**
(1 REQ'D)



ZODIAC
CH 601 XL

CENTER CONSOLE
3 WAY FUEL SELECTOR
GASCOLATOR

6-K-2



THREADED HOLE
DRILL WITH LETTER "Q"
TAP 1/8-27 NPT
(3 PLACES)

2 RIVETS A5 IN EACH
FLANGE TO BOTTOM SKIN

1 1/2" X.125" 6161-T6
SQ TUBE
I=40MM

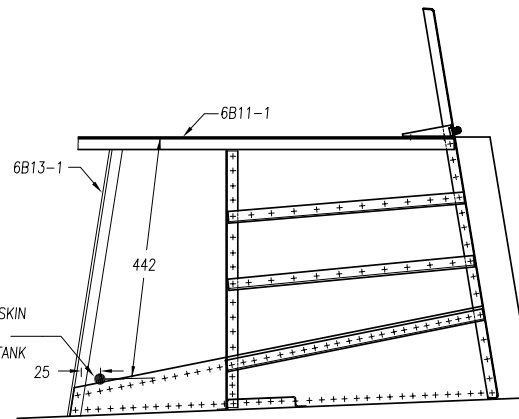
EXTRUSION 6061-T6
1"X1-1/2"X1/8"

1 **LINE GASCOLATOR**
WELDED ASSEMBLY (4 REQ'D)

F125-4A
NIPPLE COUPLER
1/4 I/D TUBE to 1/8"NPT
QTY=4

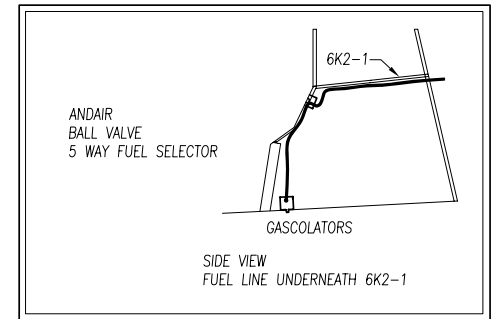
CAV-110
DRAIN
QTY=2

F125-6A
NIPPLE COUPLER
3/8 I/D TUBE to 1/8"NPT
QTY=4

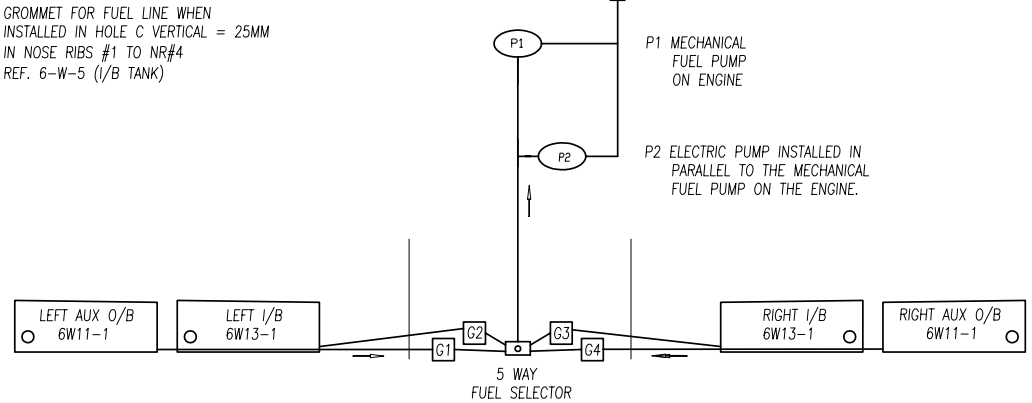


Ø13/16" HOLE IN SIDE SKIN
6B11-2 FOR GROMMET
AN931-8-13 FOR I/B TANK

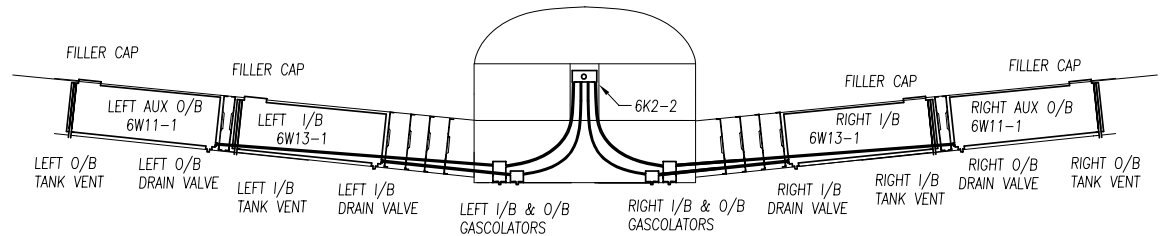
GROMMET FOR FUEL LINE WHEN
INSTALLED IN HOLE C VERTICAL = 25MM
IN NOSE RIBS #1 TO NR#4
REF. 6-W-5 (I/B TANK)



SIDE VIEW
FUEL LINE UNDERNEATH 6K2-1



G1 LEFT GASCOLATOR 6-W-13A-1 FOR 6W11-1
G2 LEFT GASCOLATOR 6-W-13A-1 FOR 6W13-1
G3 RIGHT GASCOLATOR 6-W-13A-1 FOR 6W13-1
G4 RIGHT GASCOLATOR 6-W-13A-1 FOR 6W11-1



I/B = INBOARD
O/B = OUTBOARD

ZODIAC CH 601 XL	5 WAY FUEL SELECTOR LINE GASCOLATORS	6-W-13A
	copyright© 2002 CHRIS HEINTZ zenithair.com	