

Standard Airframe

Drawing	Date	Title	Drawing	Date	Title	Drawing	Date	Title
General: C75-G-0	09/15	Three View	Fuselage: C75-FX-1	01/16	Rear Fuselage Eexploded View	Landing Gear: C75-LX-1	12/15	Landing Gear Exploded View
C75-G-1	Feb 4,	2016 Drawing List	C75-FX-2	08/15	Forward Fuselage Exploded View	C75-L-1	08/15	Nose Gear
C75-G-2	01/16	General Information	C75-F-1	05/14	Rear Fuselage Skins	C75-L-2	12/15	Main Gear
C75-G-3	12/15	Center of Gravity Limitations	C75-F-2	05/14	Rear Fuselage Bulkheads	C75-LA-1	08/15	Nose Gear Assembly
Vertical Tail: C75-RX-1	09/15	Rudder Exploded View	C75-F-3	05/14	Rear Fuselage Channels	C75-LA-2	08/15	Main Gear Assembly
C75-R-1	01/16	Rudder Ribs	C75-F-4	05/14	Rear Fuselage Doublers	Final Assembly: C75-Z-1	01/16	Door, Stops and Fairing
C75-R-2	01/16	Rudder Spar, Fin Spar, & Fin Ribs	C75-F-5	08/15	Baggage Compartment	C75-ZA-1	06/15	Horizontal Stabilizer Mounting
C75-R-3	09/14	Rudder Skin, Fin Skin, & Attachments	C75-F-6	05/14	Baggage Compartment	C75-ZA-2	05/14	Rudder Mounting
C75-RA-1	12/15	Fin & Rudder Skeleton Assembly	C75-F-7	05/14	Cabin Side	C75-ZA-3	07/15	Rudder Cable Fairing Installation
C75-RA-2	09/15	Fin & Rudder Skin Assembly	C75-F-8	05/14	Firewall	C75-ZA-4	07/15	Wing Installation
Horizontal Tail: C75-TX-1	05/14	Horizontal Tail Exploded View	C75-F-9	06/15	Firewall Stiffeners	C75-ZA-5	09/15	Elevator & Flaperon Mass Balancing
C75-T-1	05/14	Horizontal Stabilizer Ribs & Spars	C75-F-10	05/14	Forward Fuselage Floor & Stiffeners	C75-ZA-6	07/15	Control Deflections
C75-T-2	05/14	Horizontal Stabilizer Brackets & Skin	C75-F-11	08/15	Seat Structure	Aircraft Finising: C75-N-1	01/16	Cabin Doors
C75-T-3	05/14	Elevator	C75-F-12	05/14	Forward Fuselage	C75-N-2	01/16	Rubber Door Seal Edge Trim
C75-T-4	05/14	Elevator Mass Balance & Trim	C75-F-13	05/14	Seats	Engine Mount: C75-CE-1	05/14	0-200 Conical Engine Mount
C75-TA-1	05/14	Horizontal Stabilizer Assembly	C75-F-14	08/15	Gear Strut Fitting & Engine Mount Fittings			
C75-TA-2	05/14	Elevator Assembly	C75-F-15	08/15	Cabin Frame			
Flaperons: C75-AX-1	09/15	Flaperon Exploded View	C75-F-16	07/15	Instrument Panel & Window Flashings			
C75-A-1	12/15	Flaperons	C75-F-17	05/14	Windshield & Windows			
C75-A-2	06/15	Flaperons	C75-CS-1	05/14	Cabin Side Assembly			
C75-AA-1	12/15	Flaperon Assembly	C75-FA-1	08/15	Rear Fuselage Assembly			
Wings: C75-WX-1	08/15	Wings Exploded View	C75-FA-2	08/15	Rear Fuselage Top Skin & HT Frames			
C75-W-1	07/15	Wing Ribs	C75-FA-3	05/15	Baggage Compartment			
C75-W-2	12/15	Wing Spar	C75-FA-4	08/15	Forward Fuselage Floor			
C75-W-3	05/14	Wing Spar Fittings	C75-FA-5	08/15	Firewall Assembly			
C75-W-4	06/15	Root Ribs & Rear Channels	C75-FA-6	09/15	Forward Fuselage Assembly			
C75-W-5	06/15	Top Wing Skins	C75-FA-7	12/15	Fuselage Joining			
C75-W-6	06/15	Bottom Wing Skins	C75-FA-8	01/16	Seats			
C75-W-7	01/16	Struts & Strut Fittings	C75-FA-9	08/15	Windshield & Windows Installation			
C75-WS-1	09/15	Wing Spar Assembly	Controls: C75-CX-1	12/15	Controls Exploded View			
C75-WA-1	09/15	Wing Skeleton	C75-C-1	05/14	Flap Control			
C75-WA-2	09/15	Skin Riveting	C75-C-2	12/15	Elevator Controls			
C75-WA-3	01/16	Fittings	C75-C-3	12/15	Rudder Controls & Control Stick			
Fuel System: C75-K-1	09/15	Fuel System	C75-C-4	12/15	Fairleads & Pulley Supports			
C75-KA-1	05/14	Fuel System	C75-CA-1	12/15	Flaperon Controls			
C75-KA-2	08/15	Fuel Line Routing	C75-CA-2	12/15	Elevator Controls			
			C75-CA-3	09/15	Rudder Controls			

Visit the Builder's Section of Zenith Aircraft Co. website for updates, [www.zenithair.com](http://www.zenithair.com).

SERIAL NO: C75-

Cruzer  
CH 750

Drawings List

C75-G-1

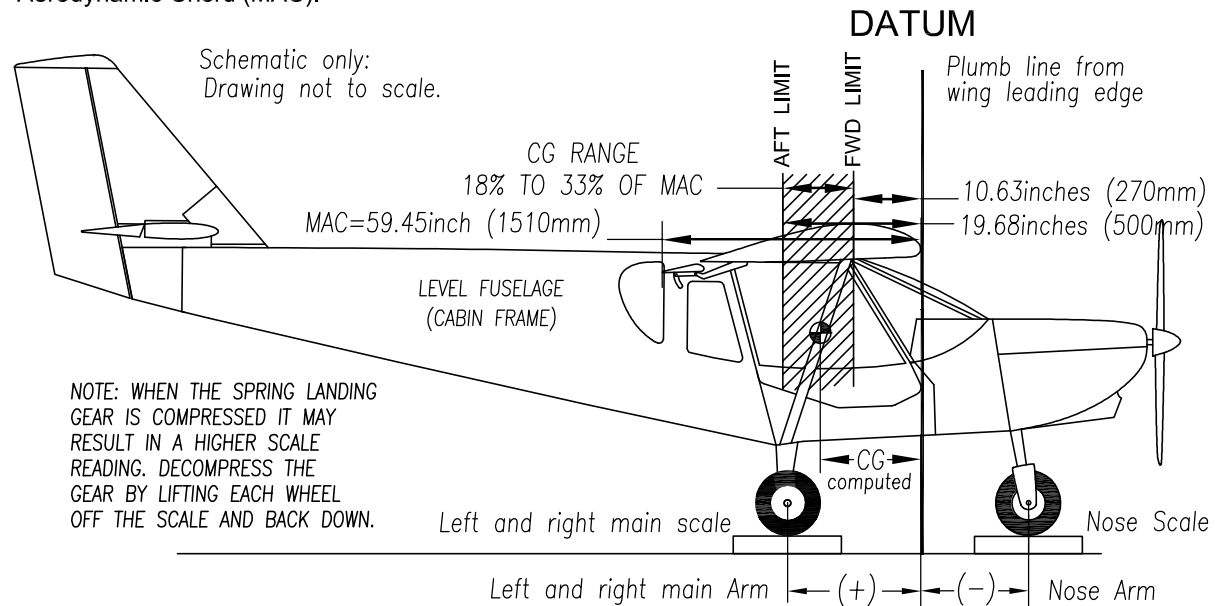
# WEIGHT AND BALANCE REPORT

DATE: \_\_\_\_\_ REGISTRATION: \_\_\_\_\_ AIRCRAFT: CRUZER CH 750

SIGNATURE: \_\_\_\_\_

PART 1 of the weight and balance report is for the manufacturer (the builder is the manufacturer for experimental or amateur-built aircraft) to provide the empty weight of the aircraft and the empty aircraft moment.

To simplify calculations, the DATUM line is chosen to coincide with the leading edge of the wing at the Mean Aerodynamic Chord (MAC).



Top off the engine oil, and remove any unnecessary items from the cabin. First, level the fuselage spanwise and longitudinally as shown in the above diagram. Then use a plumb bob on the leading edge of each wing and mark a point on the floor. Connect the left and right marks with a straight line that represents the datum line. With the help of an assistant, measure the distance from the datum line to the center of each wheel and record.

The empty aircraft must be placed on scales to record the weight under each wheel. Refer to the diagram for the correct aircraft position. Tare is the weight of any chocks or restraints used to hold the aircraft level on the scales. Net weight is the scale reading less the tare weight

Weighing Point	Scale Reading (pounds)	Tare	W x A = M		
			Net Weight	Arm (inches)	Moment
Right Main					
Left Main					
Nose Wheel			-	-	-
<b>EMPTY AIRCRAFT</b>					

PART 2 is the traditional weight and balance calculation. The first line is the empty aircraft weight and moment obtained in PART 1.

The pilot in command has the responsibility to ensure the take-off weight of the loaded aircraft is under the allowable limit and that the center of gravity (CG) is within the allowable range.

Forms 1 and 2 are to check the CG at the most forward and aft CG positions. The most forward check is done with only the pilot and minimum fuel on board. The aft CG check is done by loading up to the gross weight. Form 3 is a worksheet for a typical flight configuration.

## WEIGHT AND BALANCE CALCULATION

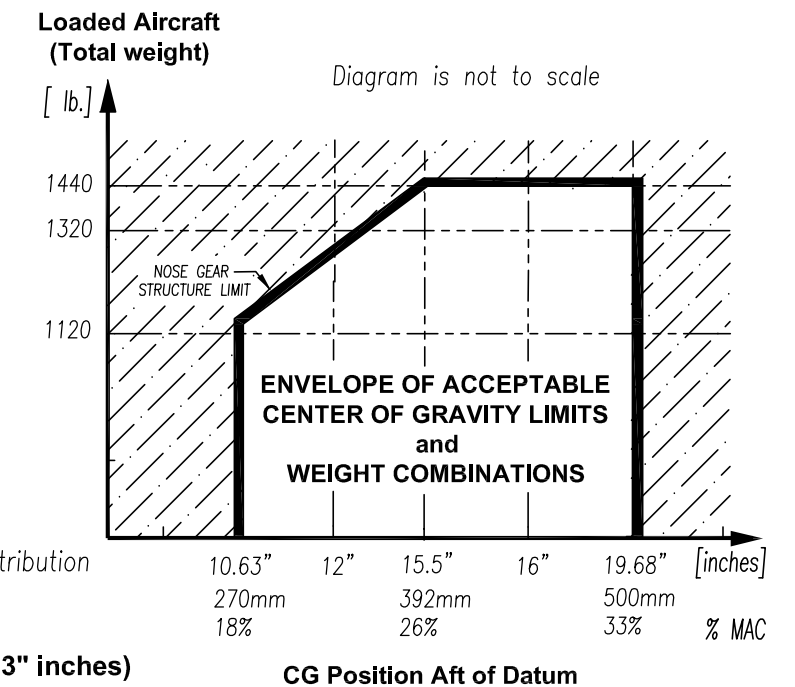
	WEIGHT lb	ARM inches	Moment
Empty Aircraft			
Pilot		25.59" *	
Co-pilot		25.59" *	
Fuel (Wing Tanks) 3.3 gallons (6 lb/gal)	20	24.80"	496
Baggage area 80 max (40 lb per side)		45.28" *	
<b>FORM 1</b>			
	total weight		total moment

**FORM 1**  
(forward CG check)

$$CG = \frac{\text{TOTAL MOMENT}}{\text{TOTAL WEIGHT}}$$

$$CG = \text{[ ]}$$

(above 10.63" inches)



	WEIGHT lb	ARM inches	Moment
Empty Aircraft			
Pilot		25.59" *	
Co-pilot		25.59" *	
Fuel (Wing Tanks) ___gallons (6 lb/gal)		24.80"	
Baggage area 80 max (40 lb per side)		45.28" *	
<b>FORM 2</b>			
	total weight		total moment

**FORM 2**  
(rear CG check)

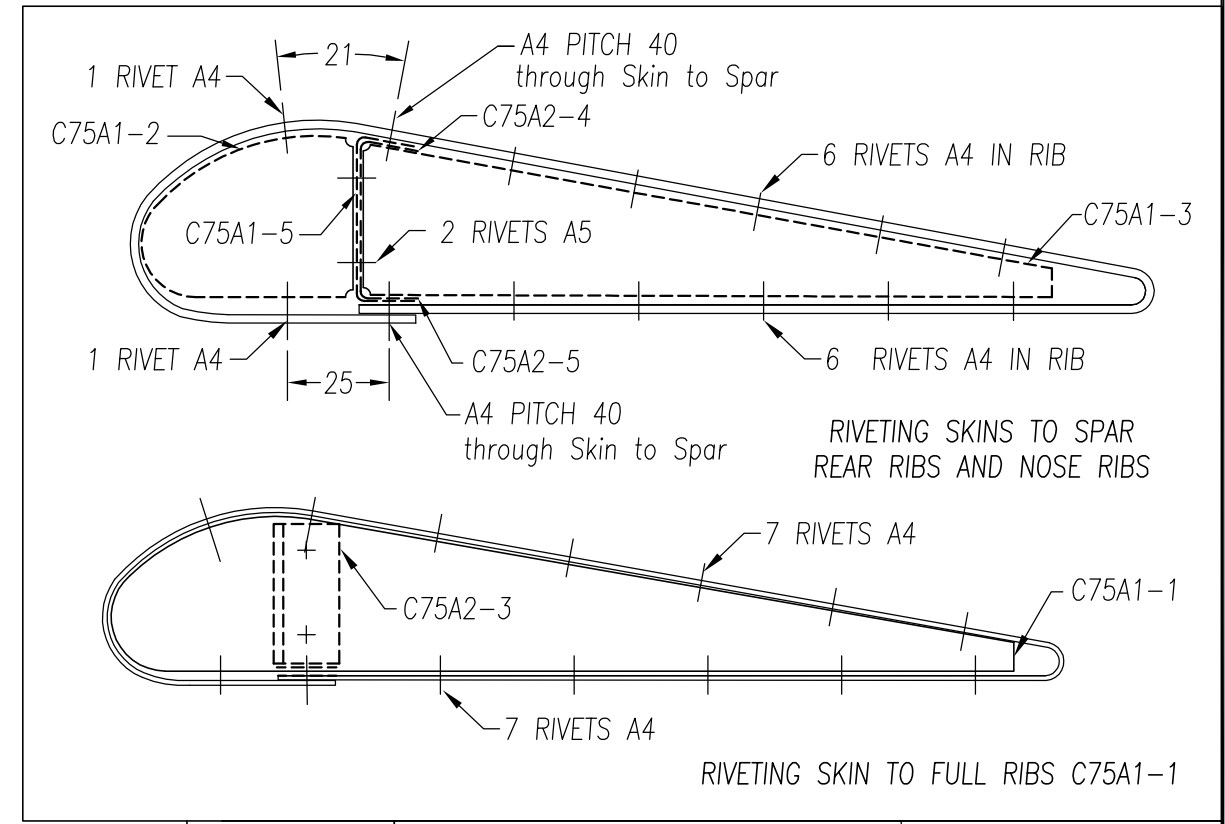
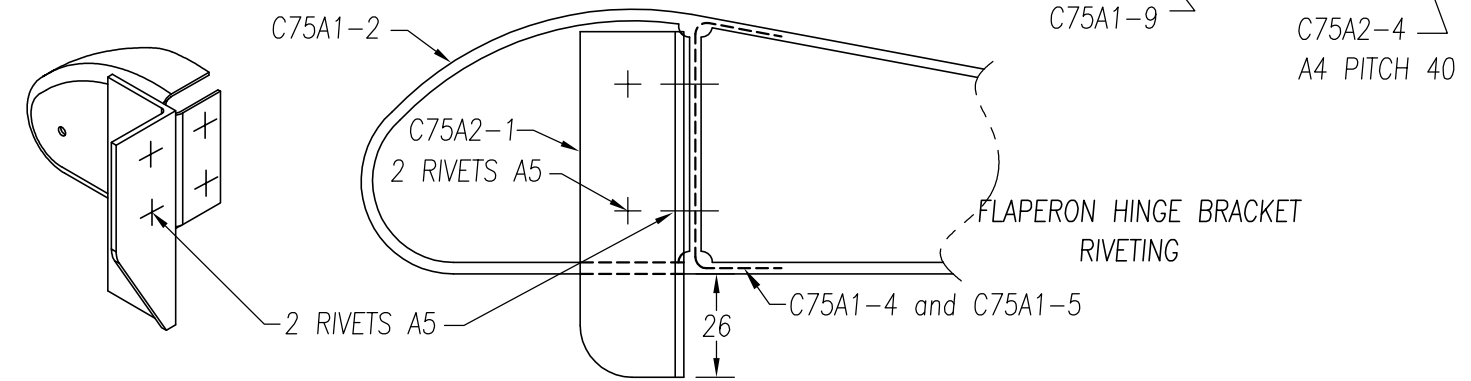
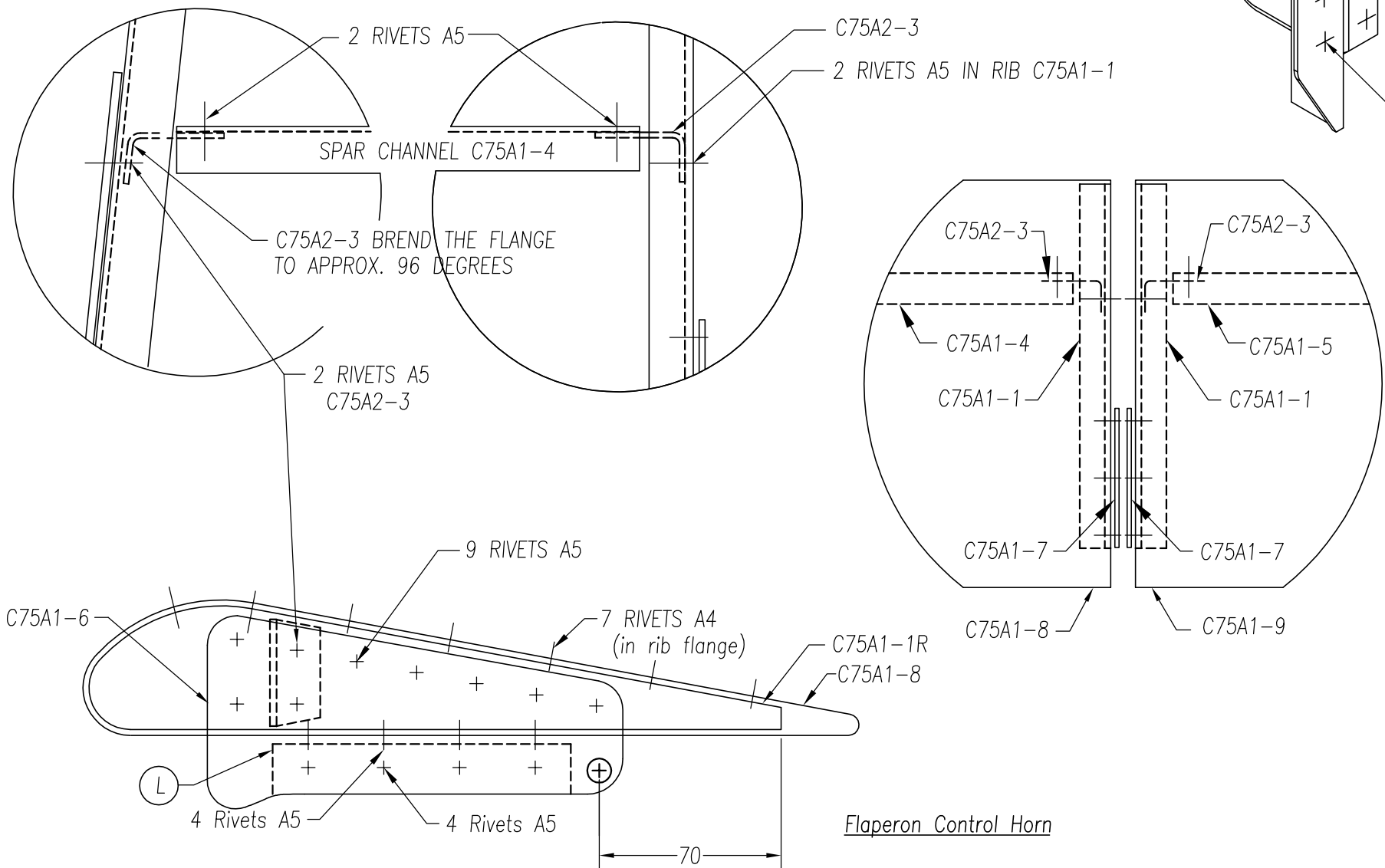
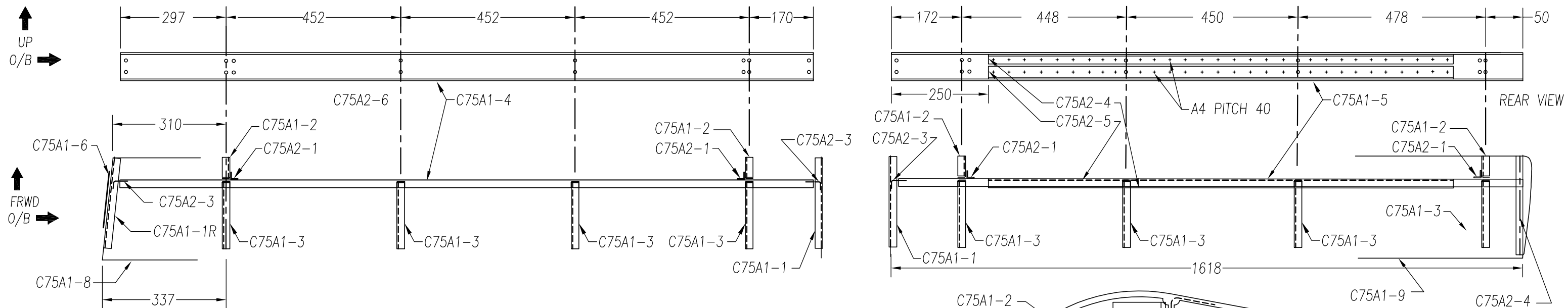
$$CG = \text{[ ]}$$

(less than 19.68" inches)

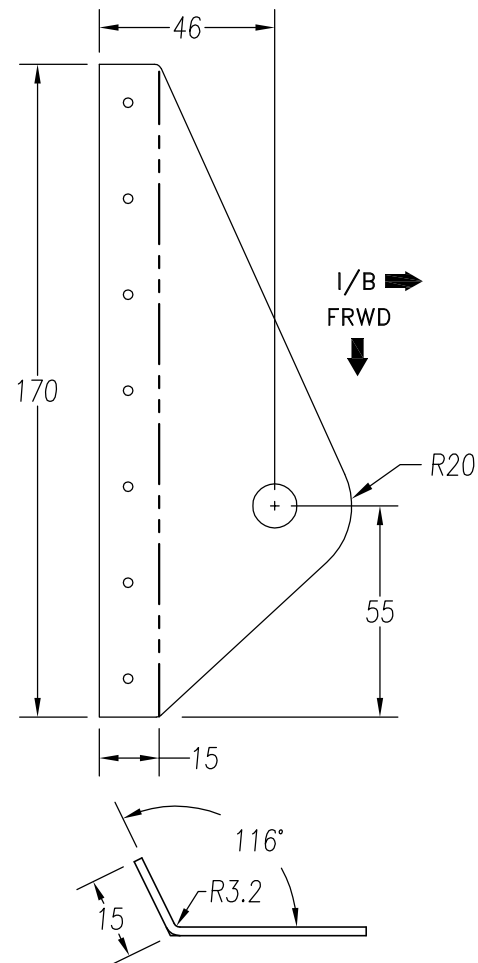
	WEIGHT lb	ARM inches	Moment
Empty Aircraft			
Pilot		25.59" *	
Co-pilot		25.59" *	
Fuel (Wing Tanks) ___gallons (6 lb/gal)		24.80"	
Baggage area 80 max (40 lb per side)		45.28" *	
<b>FORM 3</b>			
	total weight		total moment

**FORM 3**  
(worksheet)

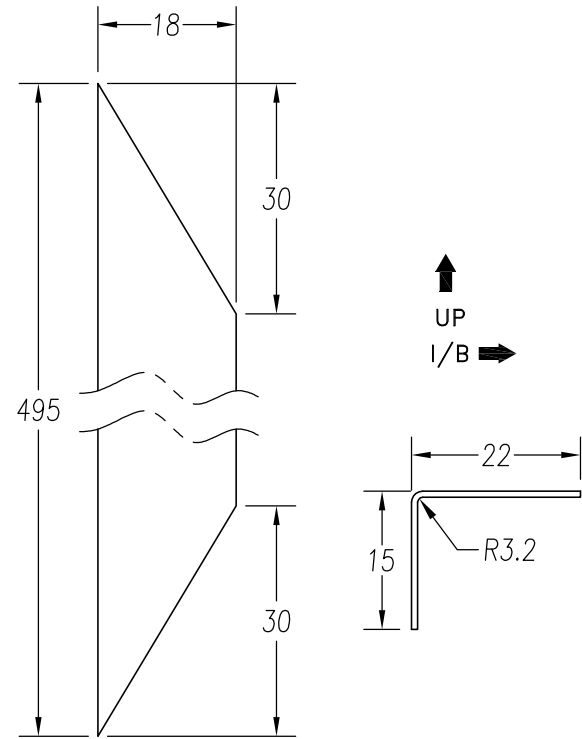
$$CG = \text{[ ]}$$



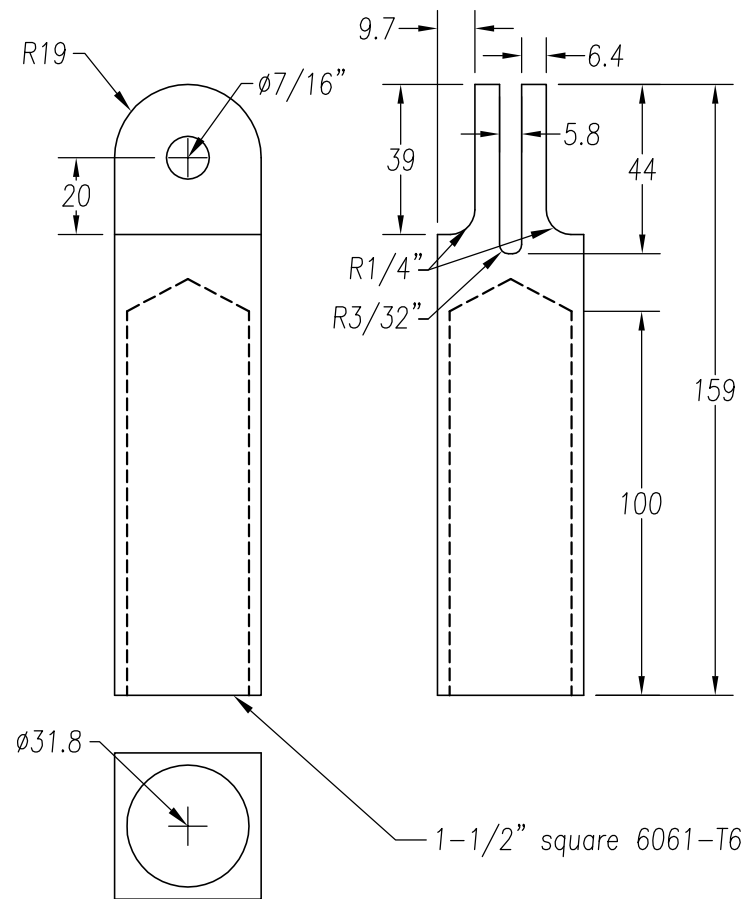
Cruzer CH 750	FLAPERON ASSEMBLY		C75-AA-1
	copyright © 2008 CHRIS HEINTZ	zenithair.com	



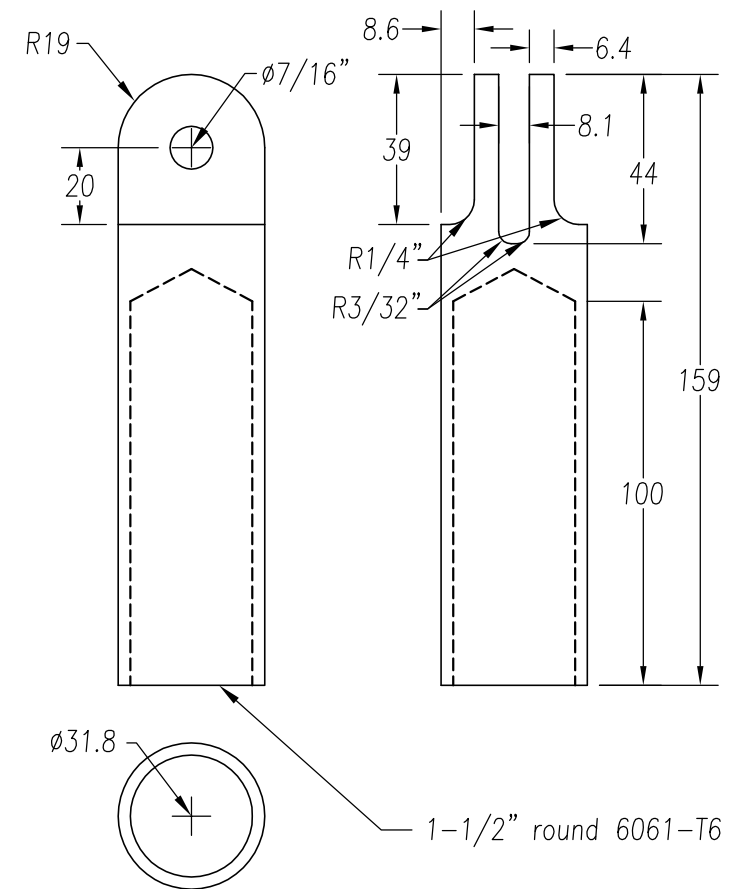
① Strut Fitting Doubler  
 t=.063inch 6061-T6 (1L + 1R)  
 Supplied Pre-Drilled



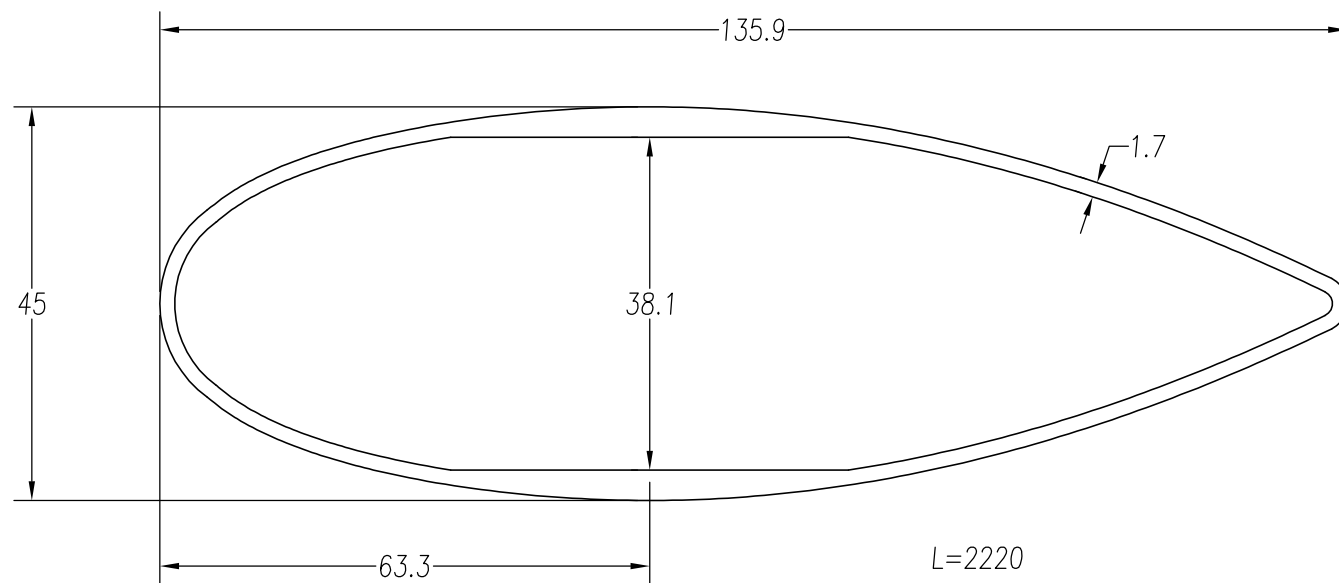
② Strut Angle  
 t=.032inch 6061-T6 (2 req'd)



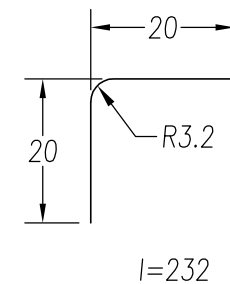
③ Lower Strut Fitting  
 1-1/2" square 6061-T6 (2 req'd)



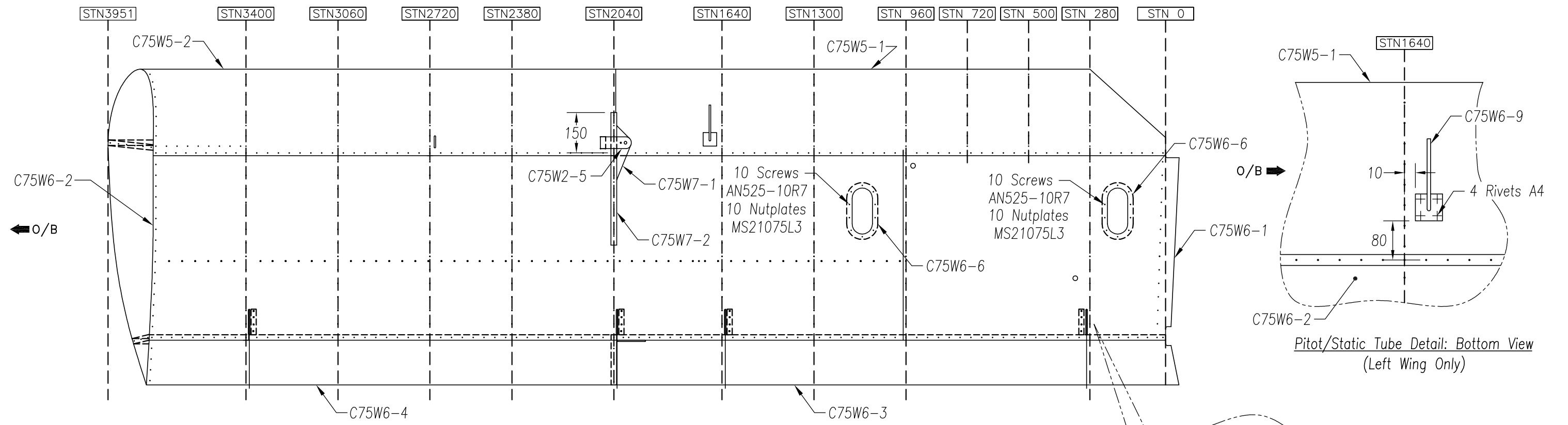
④ Upper Strut Fitting  
 1-1/2" round 6061-T6 (2 req'd)



⑤ Wing Strut  
 EXT. 6061-T6 (2 req'd)

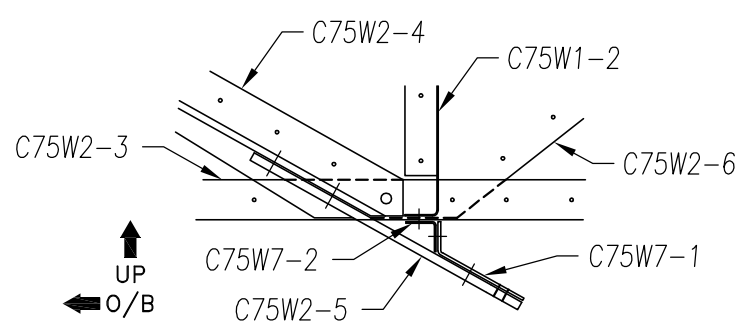


⑥ Root Top Skin Angle  
 t=0.040inch 6061-T6 (2 req'd)

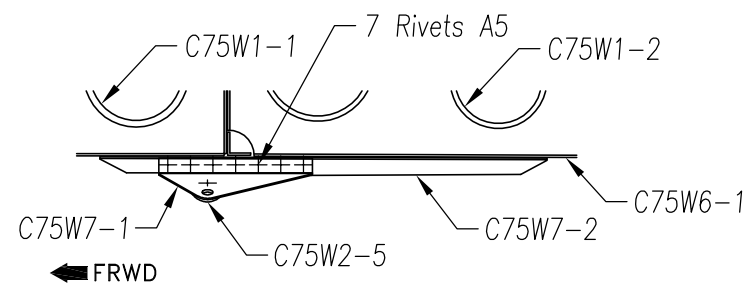


Bottom View: Right Wing Strut Fittings

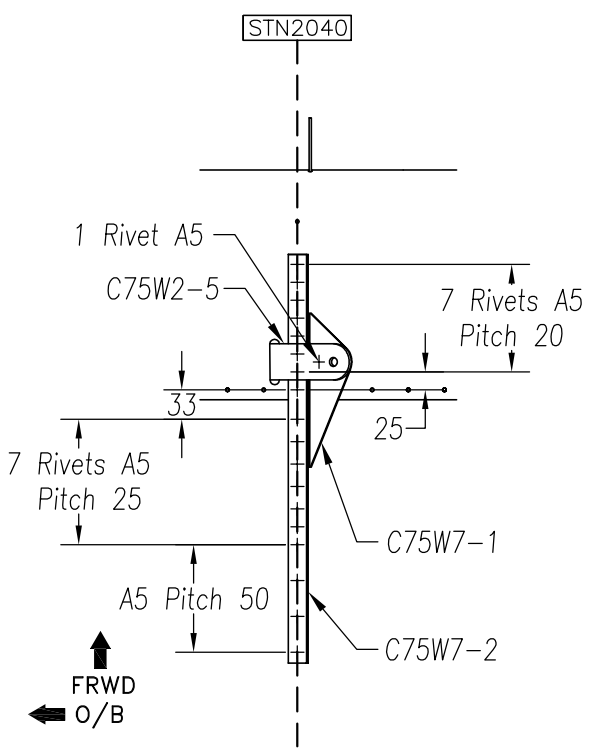
Pitot/Static Tube Detail: Bottom View (Left Wing Only)



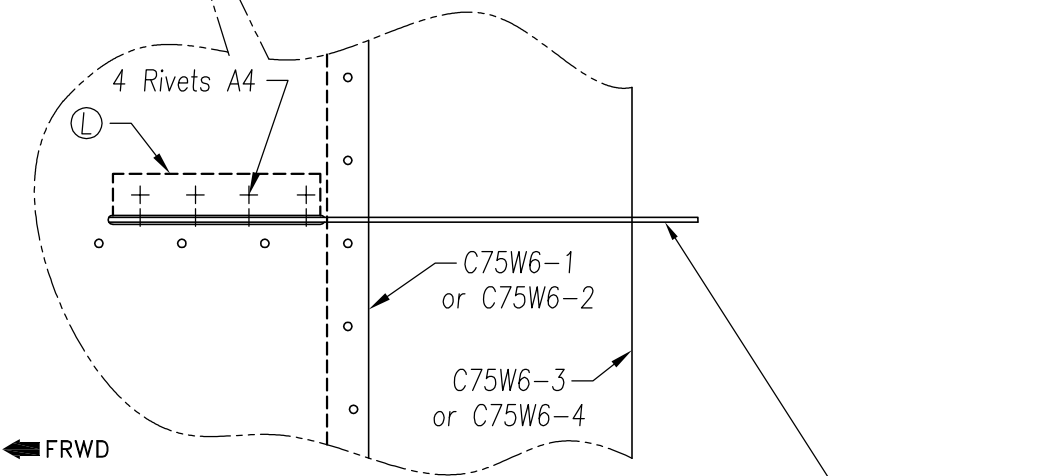
Strut Support Detail: Front View



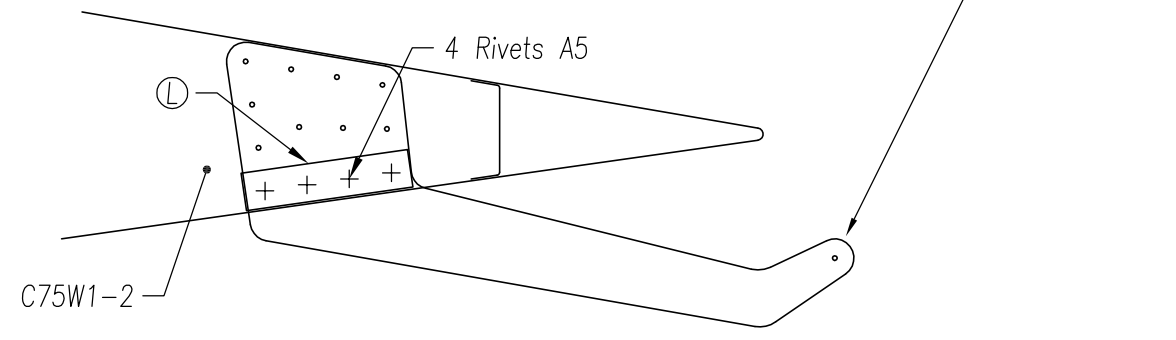
Strut Support Detail: Side View



Strut Support Detail: Bottom View

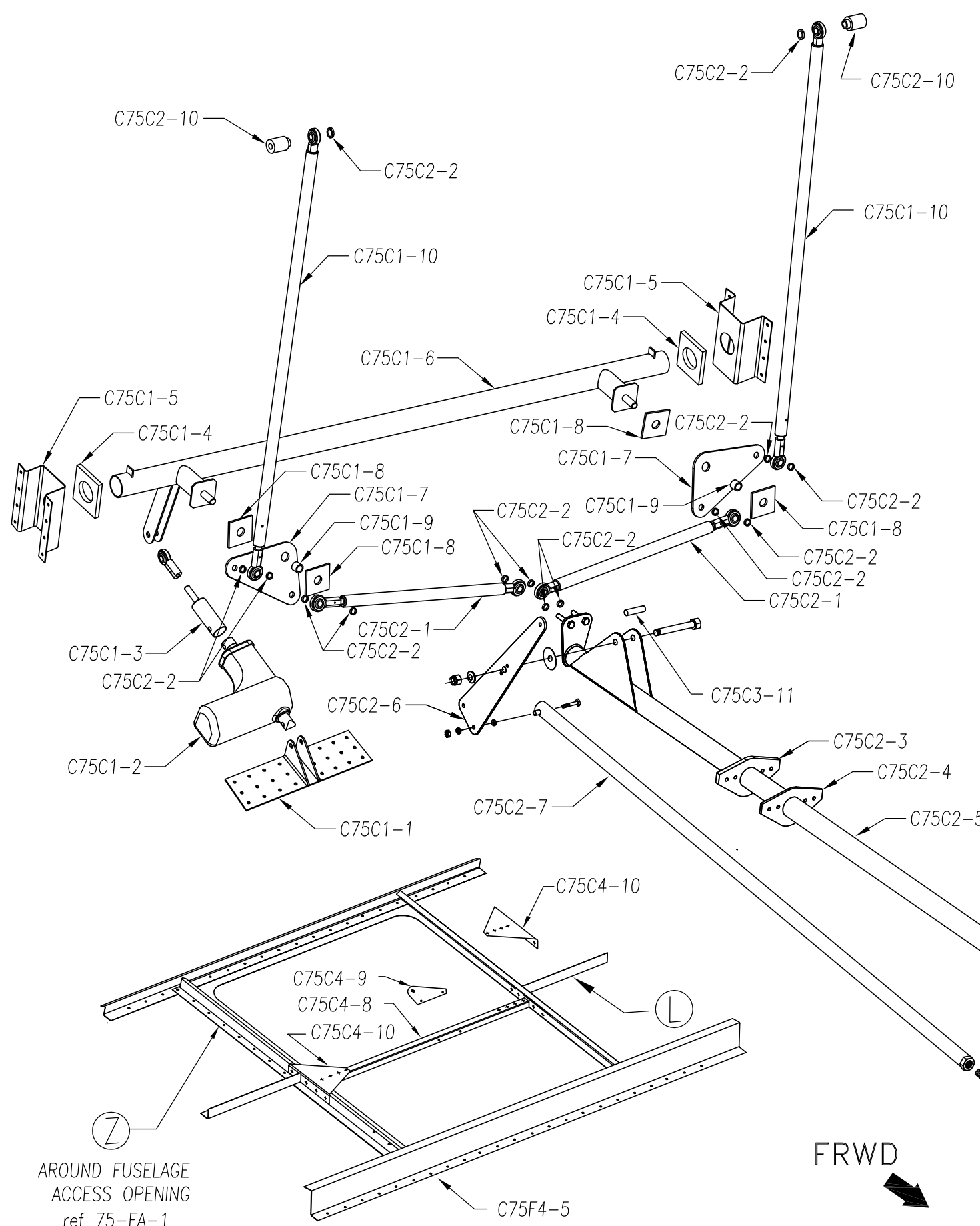


Flaperon Arm Detail: Bottom View

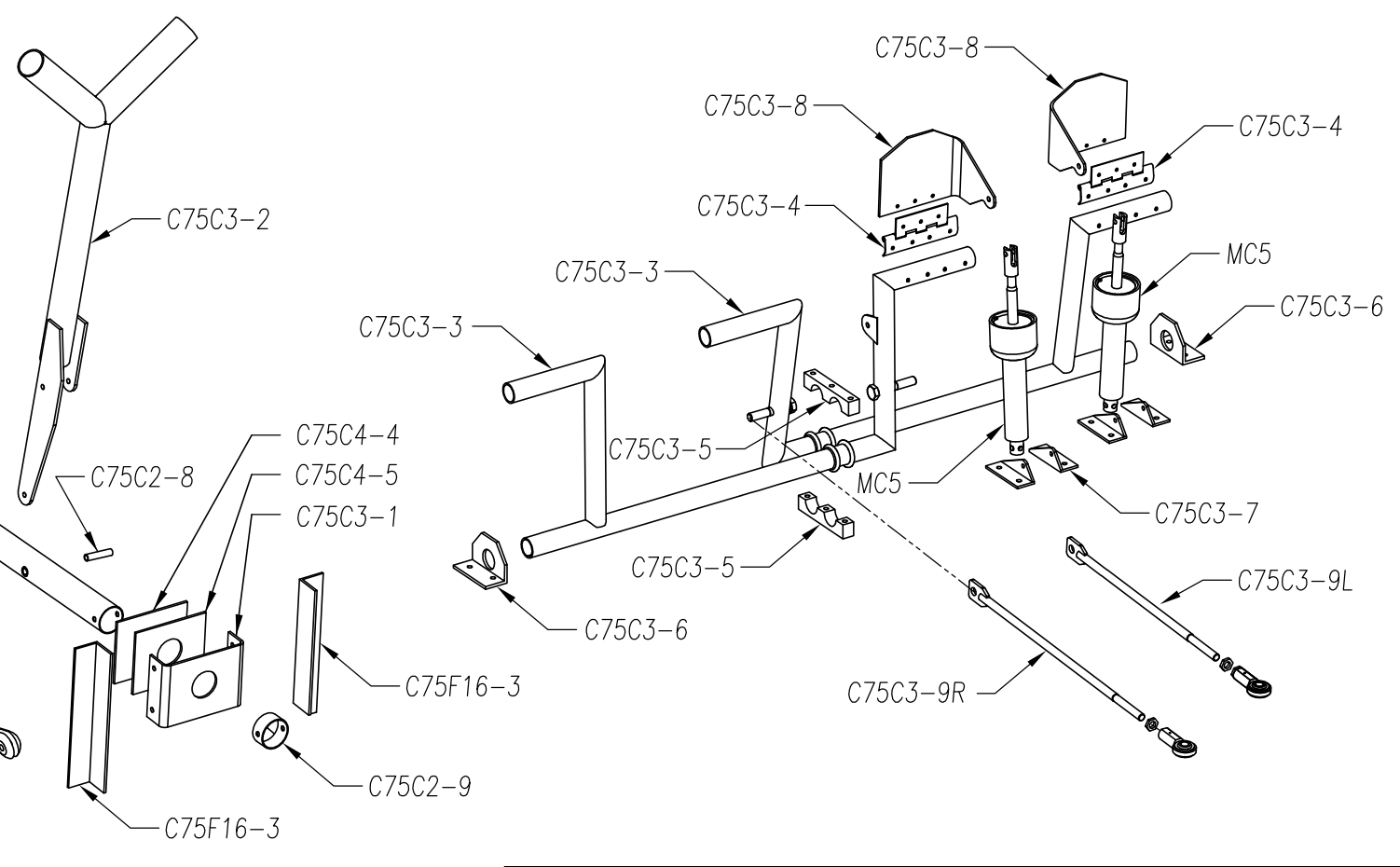


Flaperon Arm Detail: Side View

Cruzer CH 750	Fittings		C75-WA-3
	copyright © 2014 CHRIS HEINTZ	zenithair.com	

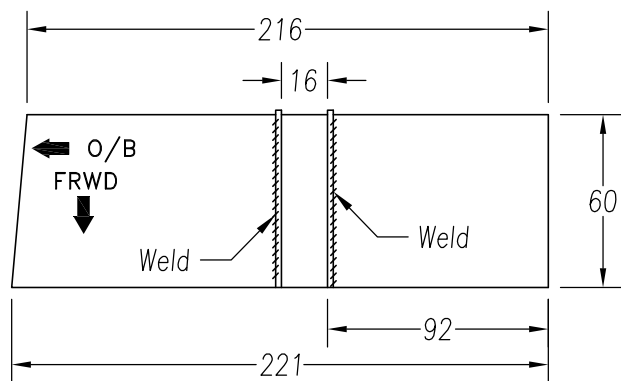


- |          |                                  |          |                            |
|----------|----------------------------------|----------|----------------------------|
| C75F16-6 | TORQUE TUBE BEARING SUPPORT      | C75C2-9  | STOP RING                  |
| C75C1-1  | LINEAR ACTUATOR MOUNT            | C75C2-10 | FLAPERON CONTROL SPACER    |
| C75C1-2  | LINEAR ACTUATOR                  | C75C3-1  | FRONT TORQUE TUBE BEARING  |
| C75C1-3  | LINEAR ACTUATOR CONTROL ROD      | C75C3-2  | CONTROL STICK              |
| C75C1-4  | MIXER BEARING                    | C75C3-3  | RUDDER PEDAL               |
| C75C1-5  | MIXER BEARING SUPPORT            | C75C3-4  | S.S. PIANO HINGE           |
| C75C1-6  | CONTROL MIXER                    | C75C3-5  | CENTRAL PEDAL BEARING      |
| C75C1-7  | FLAPERON BELLCRANK               | C75C3-6  | LATERAL PEDAL BEARING      |
| C75C1-8  | FLAPERON BELLCRANK BEARING       | C75C3-7  | BRAKE CYLINDER SUPPORT     |
| C75C1-9  | FLAPERON BELLCRANK BUSHING       | C75C3-8  | TOE BRAKE PEDAL            |
| C75C1-10 | VERTICAL FLAPERON CONTROL ROD    | C75C3-9  | STEERING RODS              |
| C75C2-1  | HORIZONTAL FLAPERON CONTROL ROD  | C75C3-11 | TORQUE TUBE BUSHING        |
| C75C2-2  | CONTROL ROD BUSHING              | C75C4-4  | FRONT TORQUE TUBE FAIRLEAD |
| C75C2-3  | REAR TORQUE TUBE BEARING         | C75C4-5  | FRONT TORQUE TUBE BOUBLER  |
| C75C2-4  | REAR TORQUE TUBE BEARING DOUBLER | C75C4-8  | END PLATE ANGEL            |
| C75C2-5  | TORQUE TUBE                      | C75C4-9  | TORQUE TUBE END PLATE      |
| C75C2-6  | ELEVATOR BELLCRANK               | C75C4-10 | END PLATE GUSSETS          |
| C75C2-7  | ELEVATOR CONTROL TUBE            |          |                            |
| C75C2-8  | CONTROL STICK BUSHING            |          |                            |

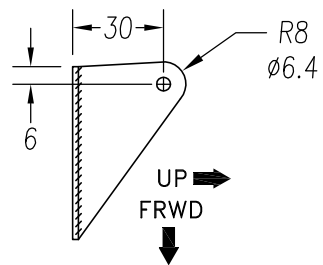


AROUND FUSELAGE  
ACCESS OPENING  
ref 75-FA-1

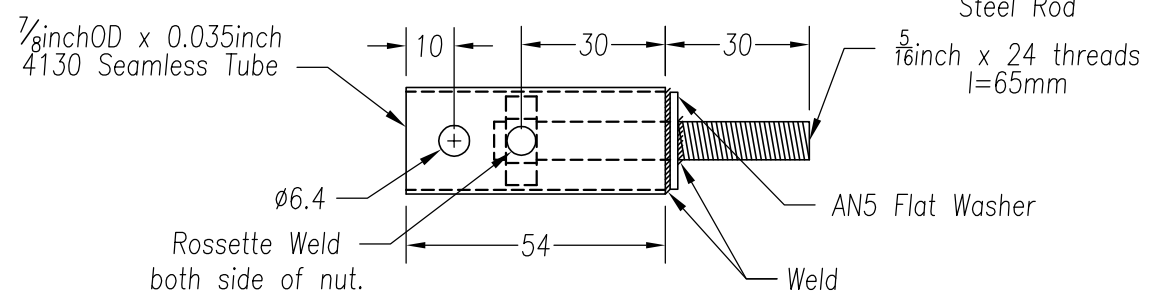
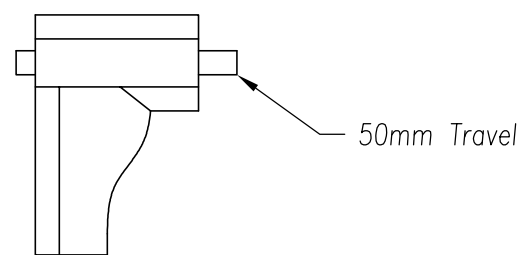
FRWD



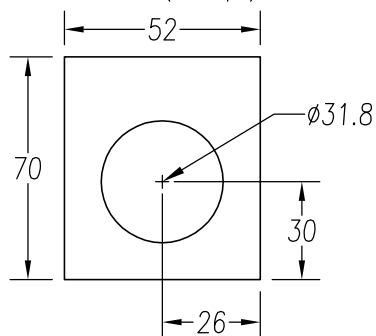
① Linear Actuator Mount  
4130 Welded Assembly  
t=0.080" (1 req'd)



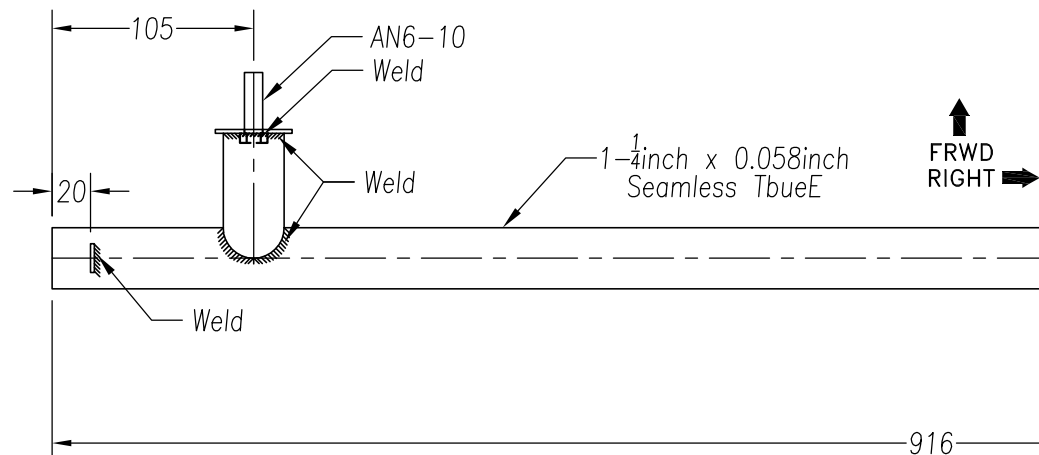
② Linear Actuator  
P/N: DE12-17W41M05



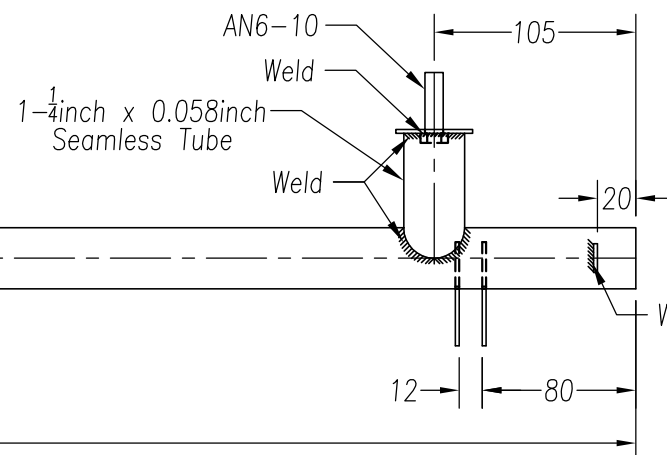
③ Linear Actuator Control Rod  
4130 Welded Assembly (1 req'd)



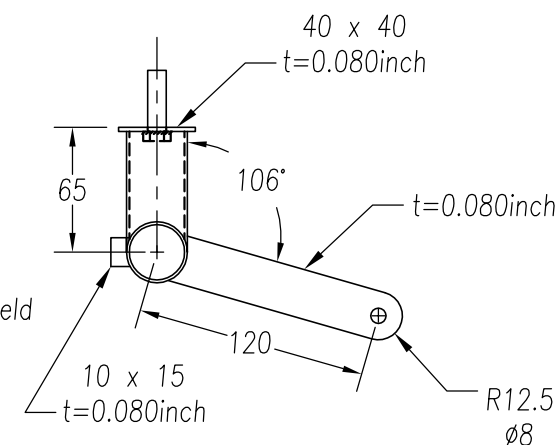
④ Mixer Bearing  
t=0.25inch NYLOIL (2 req'd)  
Supplied Predrilled



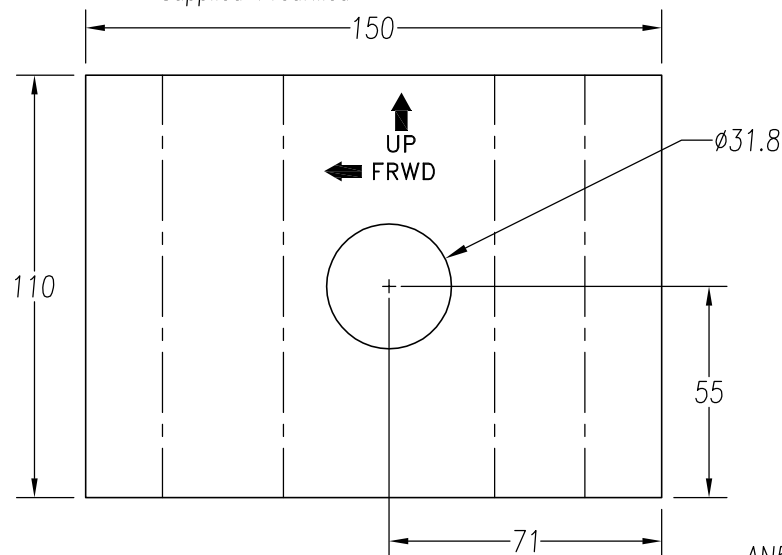
⑥ Control Mixer  
4130 Welded Assembly (1 req'd)



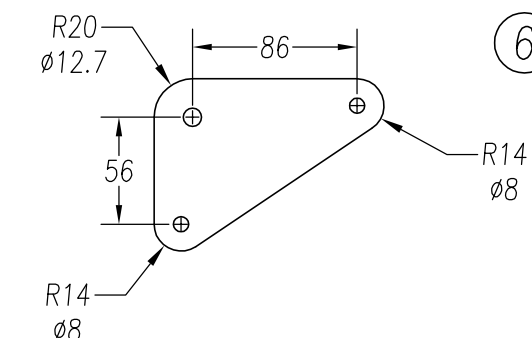
⑧ Flaperon Bellcrank Bearing  
t=0.125inch Nylon (4 req'd)



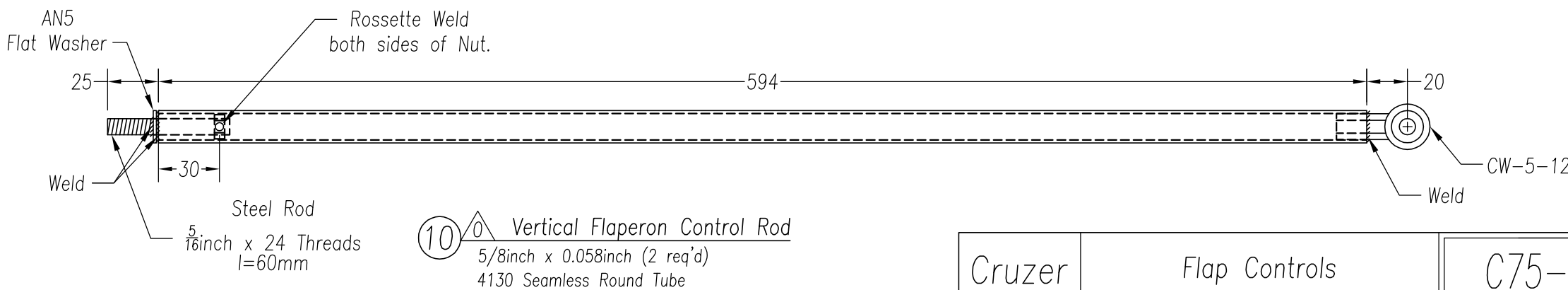
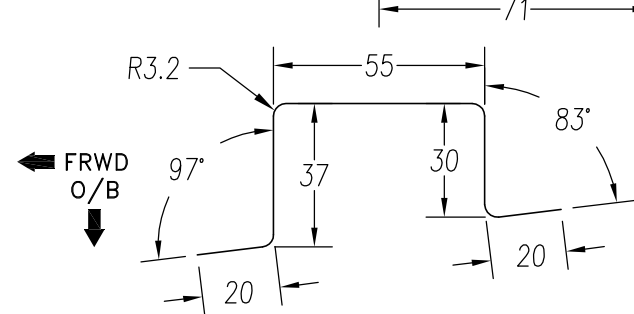
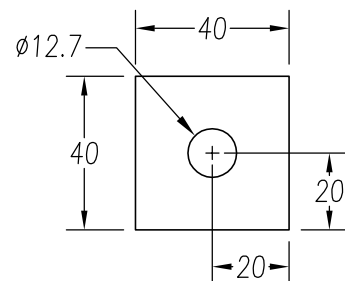
⑨ Flaperon Bellcrank Bushing  
1/2inch x 0.058inch (2 req'd)  
4130 Seamless Round Tube



⑤ Mixer Bearing Support  
t=0.063inch 6061-T6 (1L + 1R)  
Supplied Predrilled



⑦ Flaperon Bellcrank  
t=0.125inch 6061-T6 (2 req'd)  
Supplied Predrilled



⑩ Vertical Flaperon Control Rod  
5/8inch x 0.058inch (2 req'd)  
4130 Seamless Round Tube

Cruzer  
CH 750

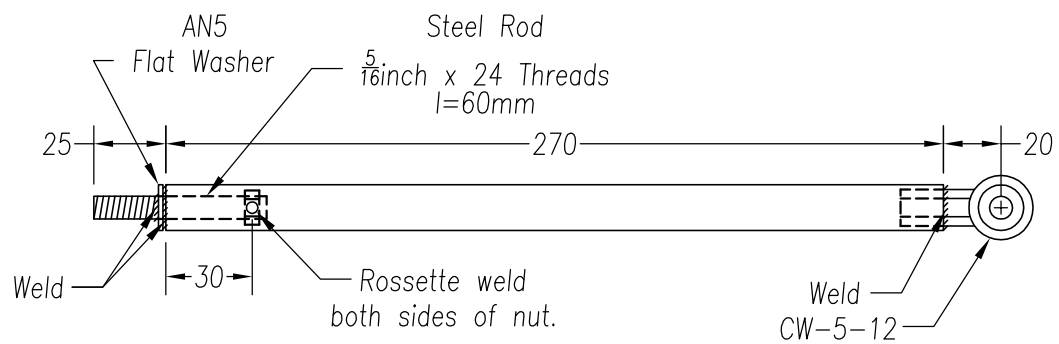
Flap Controls

C75-C-1

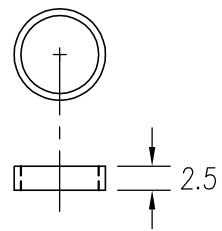
copyright © 2014 CHRIS HEINTZ

zenithair.com

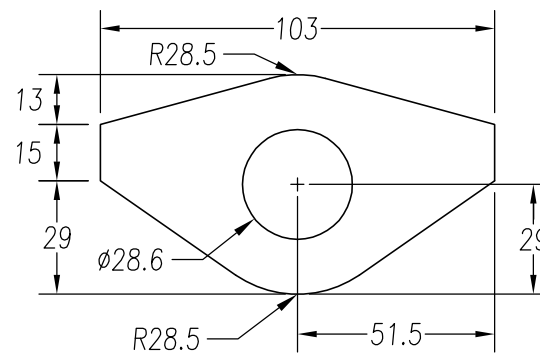
DATE: 05/14



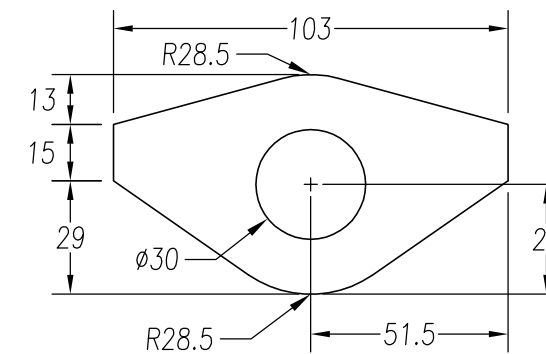
① Horizontal Flaperon Control Rod  
 5/8inch x 0.058inch (2 req'd)  
 4130 Seamless Round Tube



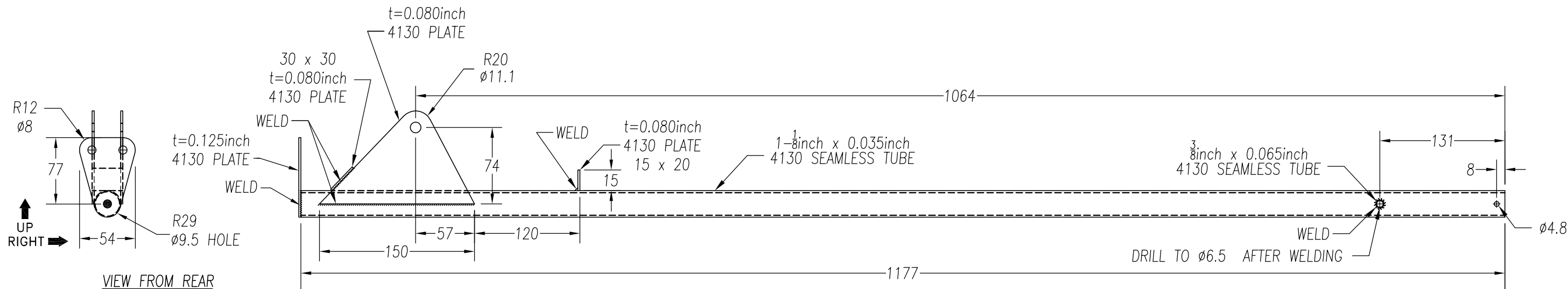
② Control Rod Bushing  
 3/8inch x 0.028inch (14 req'd)  
 4130 Seamless Round Tube



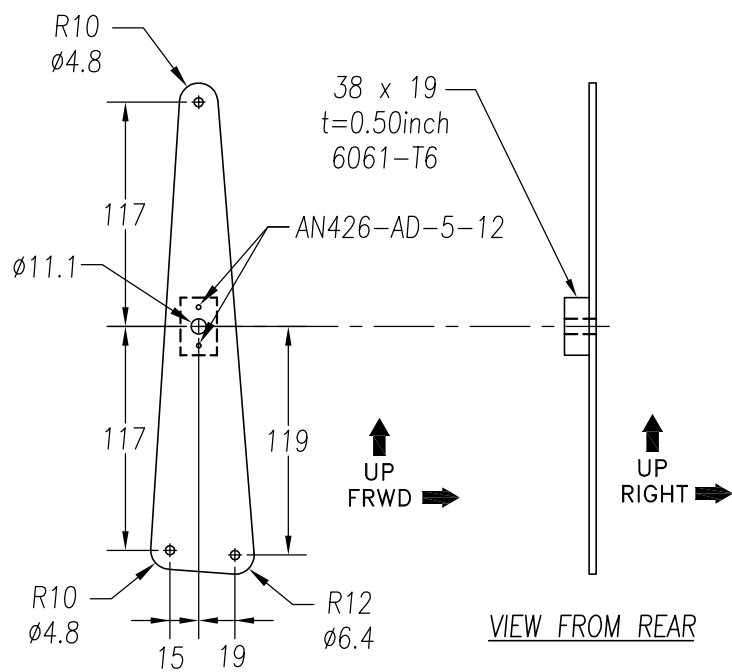
③ Rear Torque Tube Bearing  
 t= 0.25inch NYLOIL (1 req'd)  
 Supplied Pre-Drilled



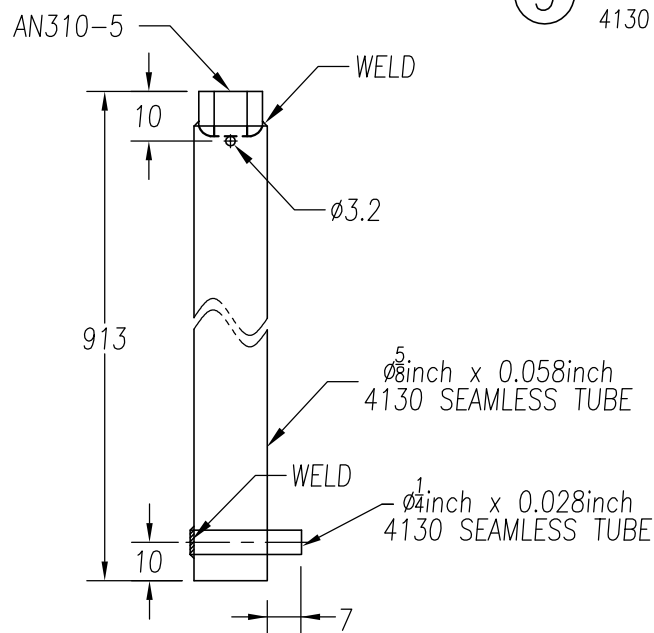
④ Rear Torque Tube Bearing Doubler  
 t= 0.125inch 6061-T6 (1 req'd)  
 Supplied Pre-Drilled



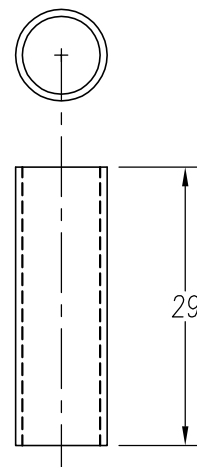
⑤ Torque Tube  
 4130 Welded Assembly (1 req'd)



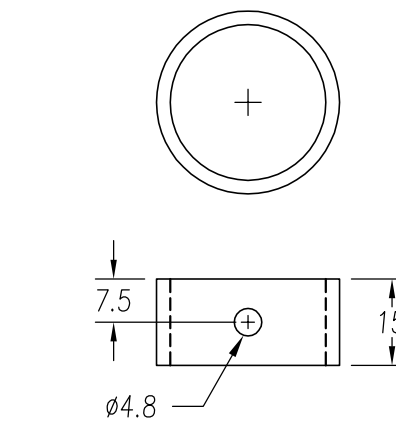
⑥ Elevator Bellcrank  
 t= 0.125inch 6061-T6 (1 req'd)  
 Supplied Pre-Drilled



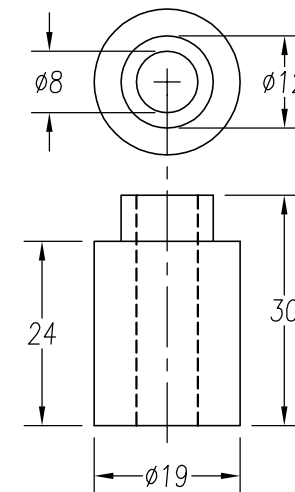
⑦ Elevator Control Tube  
 4130 Welded Assembly (1 req'd)



⑧ Control Stick Bushing  
 1/4inch x 0.028inch (1 req'd)  
 4130 Seamless Round Tube

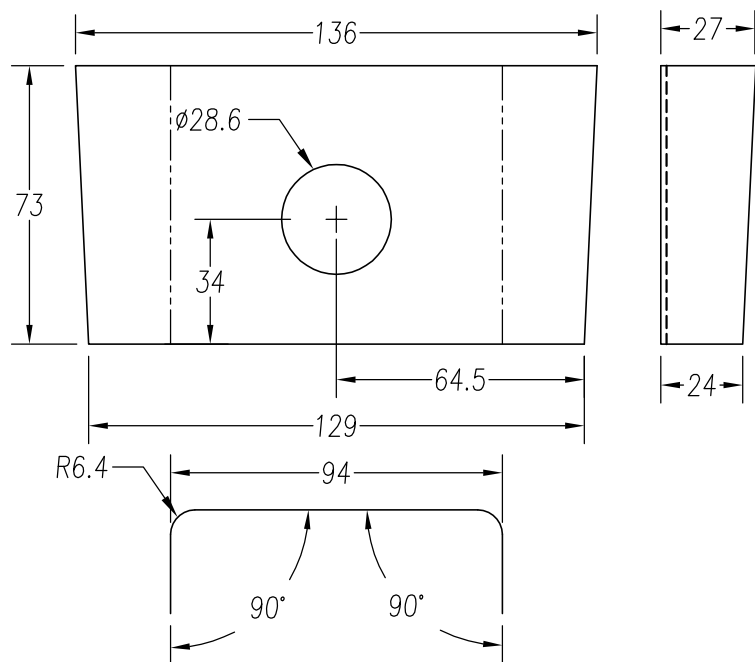


⑨ Stop Ring  
 1-1/4inch x 0.058inch (1 req'd)  
 4130 Seamless Round Tube

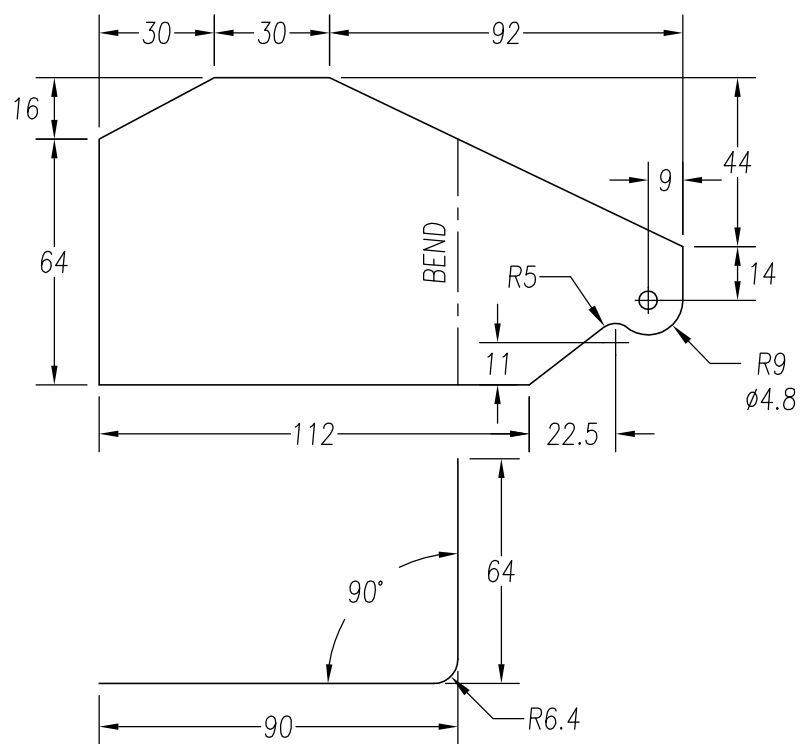


⑩ Flaperon Control Spacer  
 3/4inch Dia Solid Rod 6061-T6 (2 req'd)

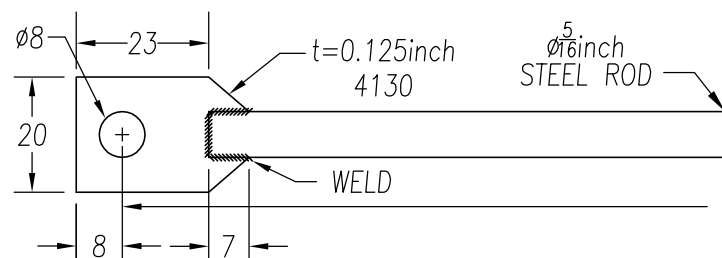




① Front Torque Tube Bearing  
 t = 0.090inch 6061-T6 (1 req'd)  
 SUPPLIED PRE-DRILLED

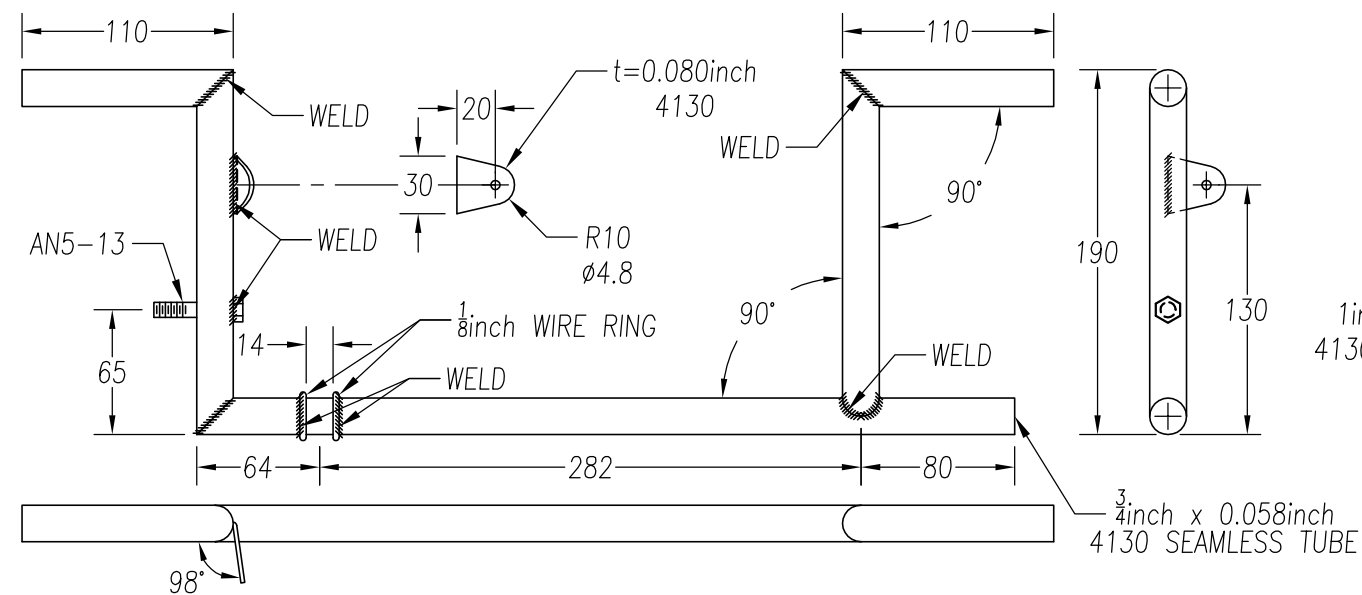


⑧ Toe Brake Pedal  
 t = 0.090inch 6061-T6 (1L + 1R)

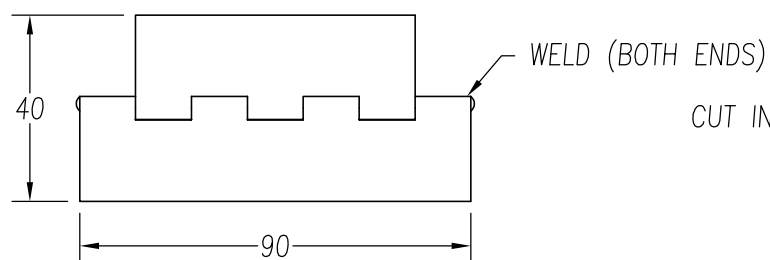


LEFT l=278  
 RIGHT l=300

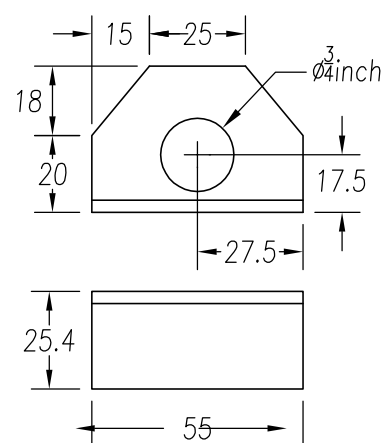
⑨ Steering Rod  
 WELDED ASSEMBLY (1L + 1R)



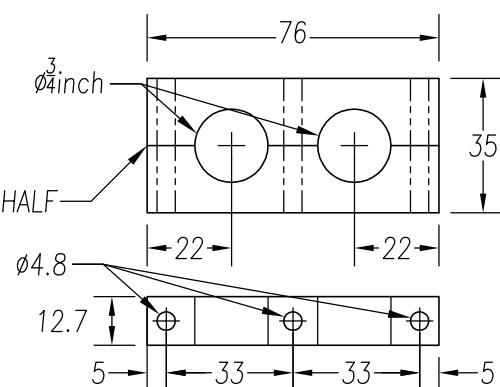
③ Rudder Pedal  
 4130 WELDED ASSEMBLY (1L + 1R)



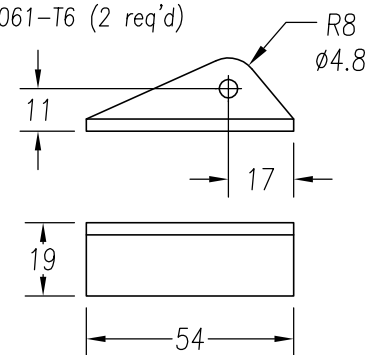
④ S.S. Piano Hinge  
 STAINLESS STEEL (2 req'd)



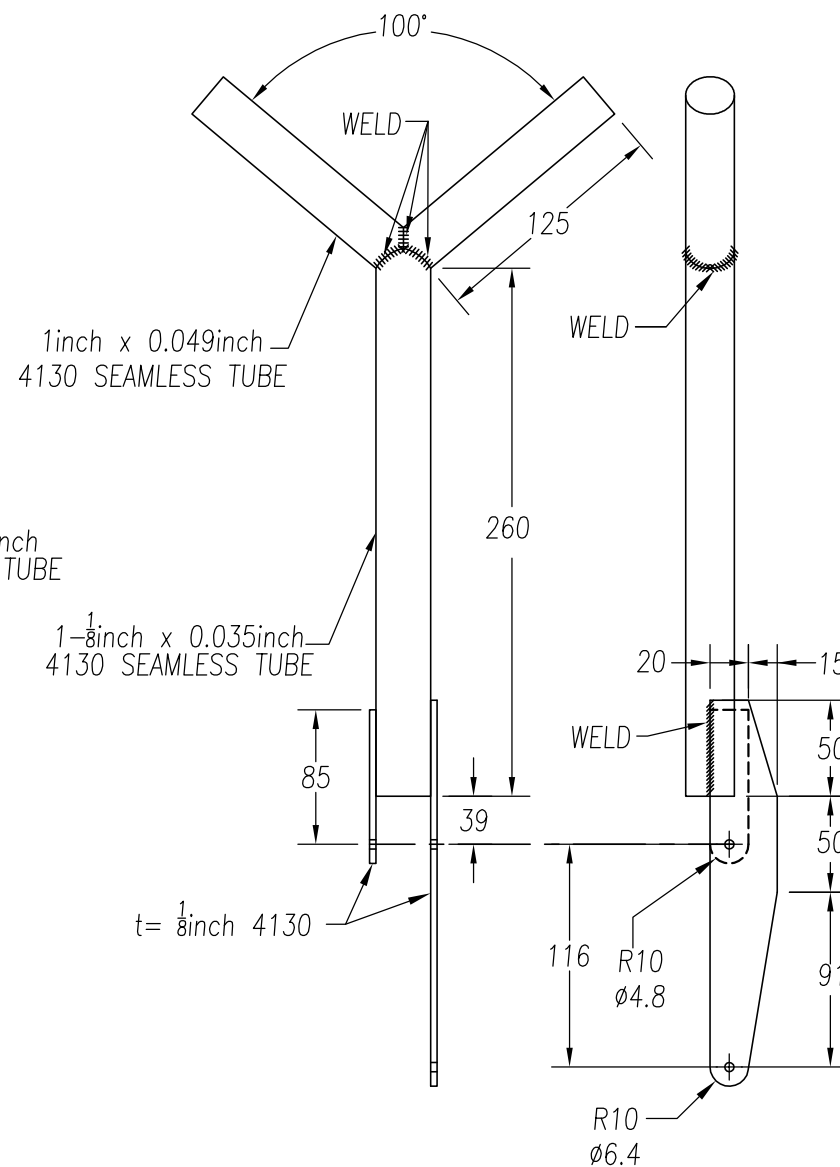
⑥ Lateral Pedal Bearing  
 EXT. 1-1/2inch x 1inch x 1/8inch (2 req'd)



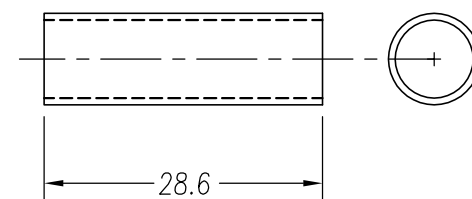
⑤ Central Pedal Bearing  
 NYLOIL (1 req'd)  
 SUPPLIED PRE-DRILLED  
 6061-T6 (2 req'd)



⑦ Brake Cylinder Support  
 EXT. 3/4inch x 3/4inch x 1/8inch  
 6061-T6 (2L + 2R)



② Control Stick  
 4130 WELDED ASSEMBLY (1 req'd)



⑪ Torque Tube Bushing  
 1/2inch x 0.028inch (1 req'd)  
 4130 SEAMLESS ROUND TUBE

Cruzer  
 CH 750

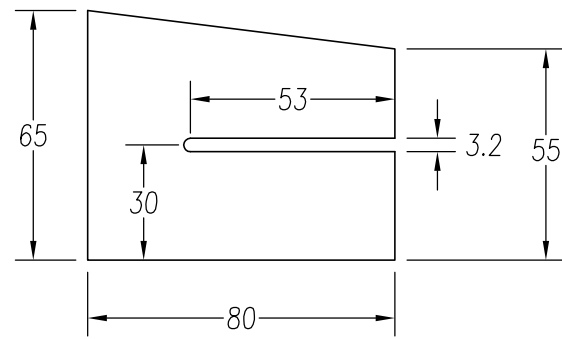
Rudder Controls  
 & Control Stick

C75-C-3

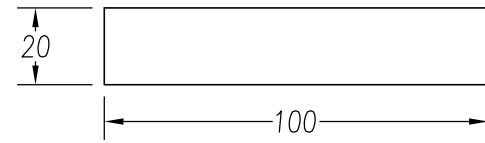
copyright © 2014 CHRIS HEINTZ

zenithair.com

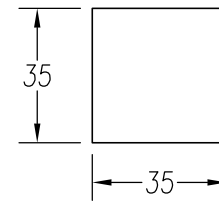
DATE: 12/15



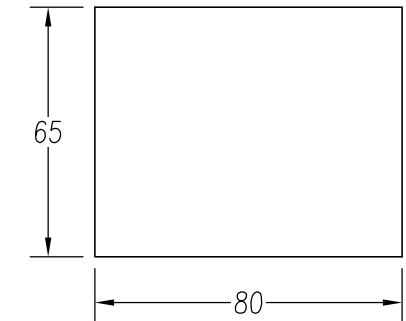
① Rudder Outlet Fairlead  
t=0.125inch Nylon (2 req'd)



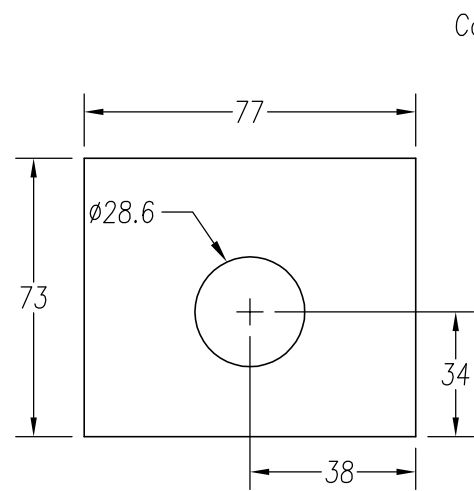
② Right Arm Rest Rudder Fairlead  
t=0.125inch Nylon (1 req'd)



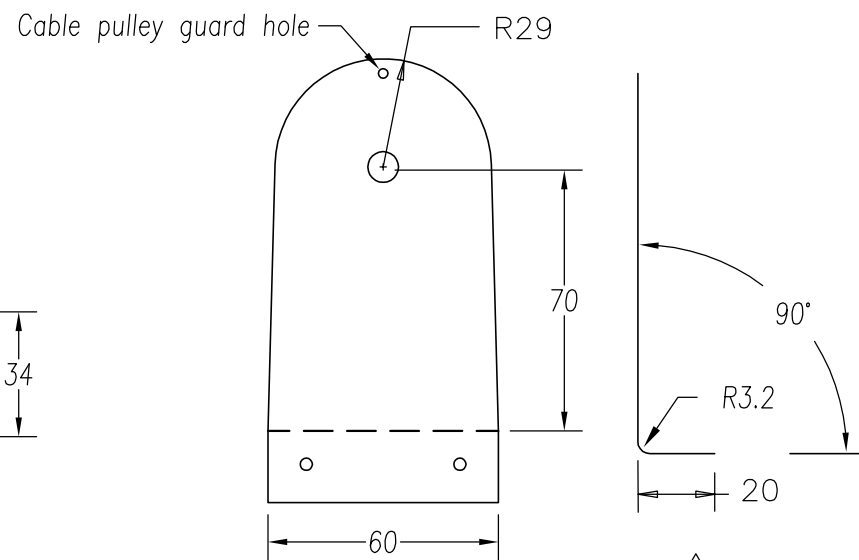
③ Torque Tube Bearing Support Rudder Fairlead  
t=0.125inch Nylon (2 req'd)



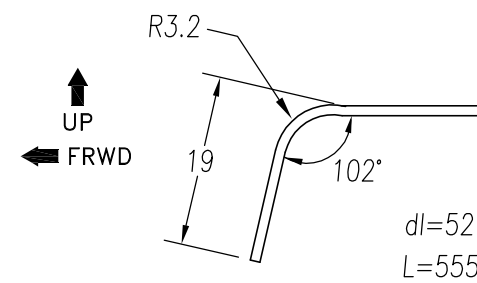
④ Front Torque Tube Bearing Rudder Fairlead  
t=0.125inch Nylon (1 req'd)



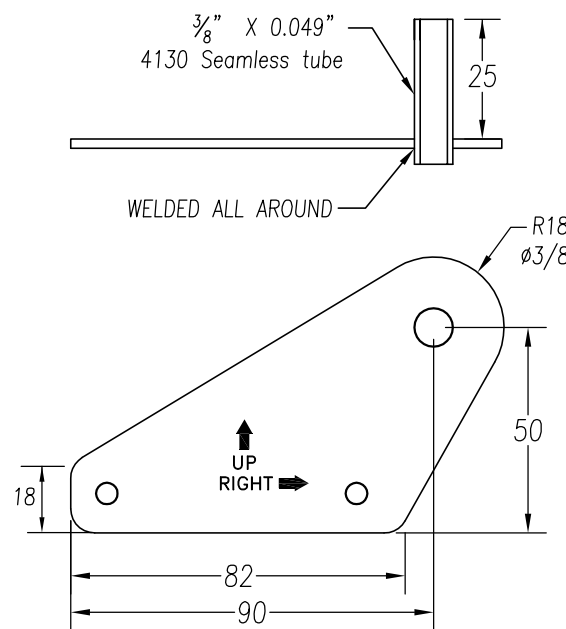
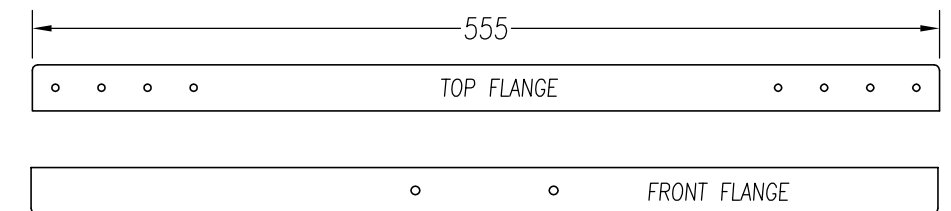
⑤ Front Torque Tube Bearing Doubler  
t=0.090inch 6061-T6 (1 req'd)  
Supplied Pre-Drilled



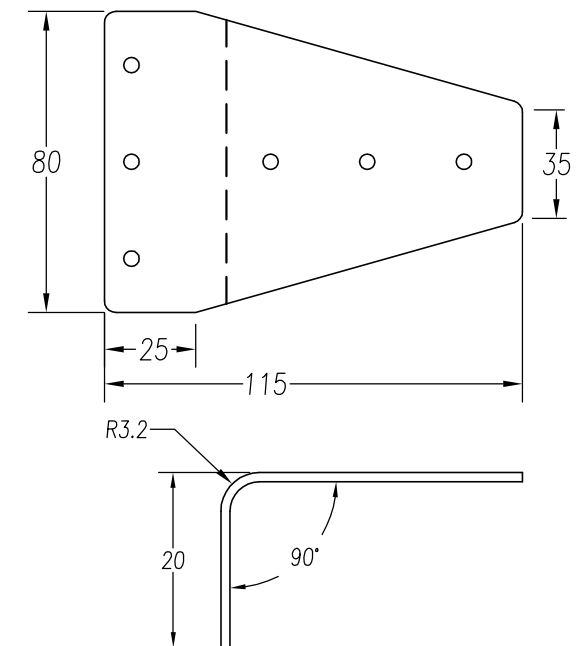
⑥ Elevator Cable Pulley Support  
t=0.040inch 6061-T6 (4 req'd)  
Supplied Pre-Drilled



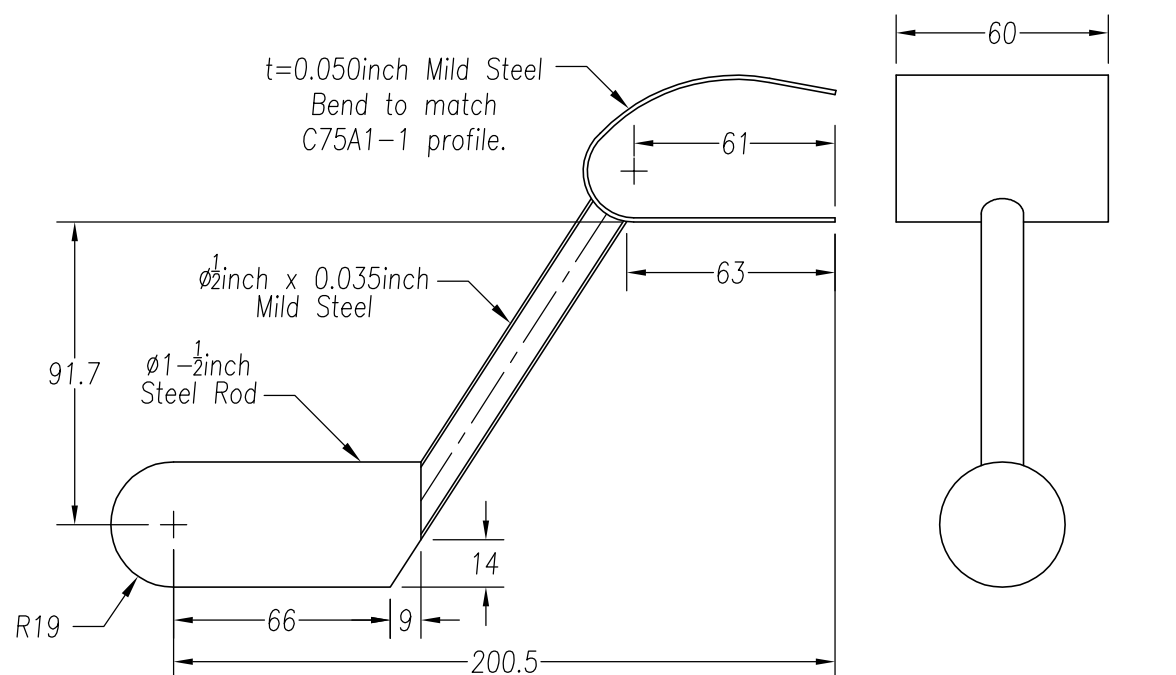
⑧ END PLATE ANGLE  
t=0.063inch 6061 T6 (1 req'd)



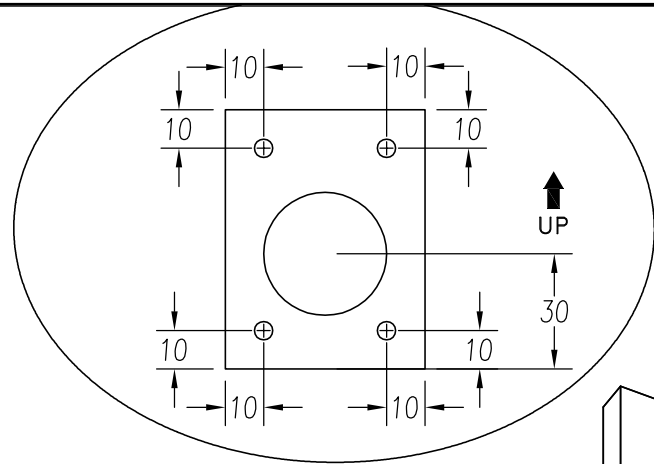
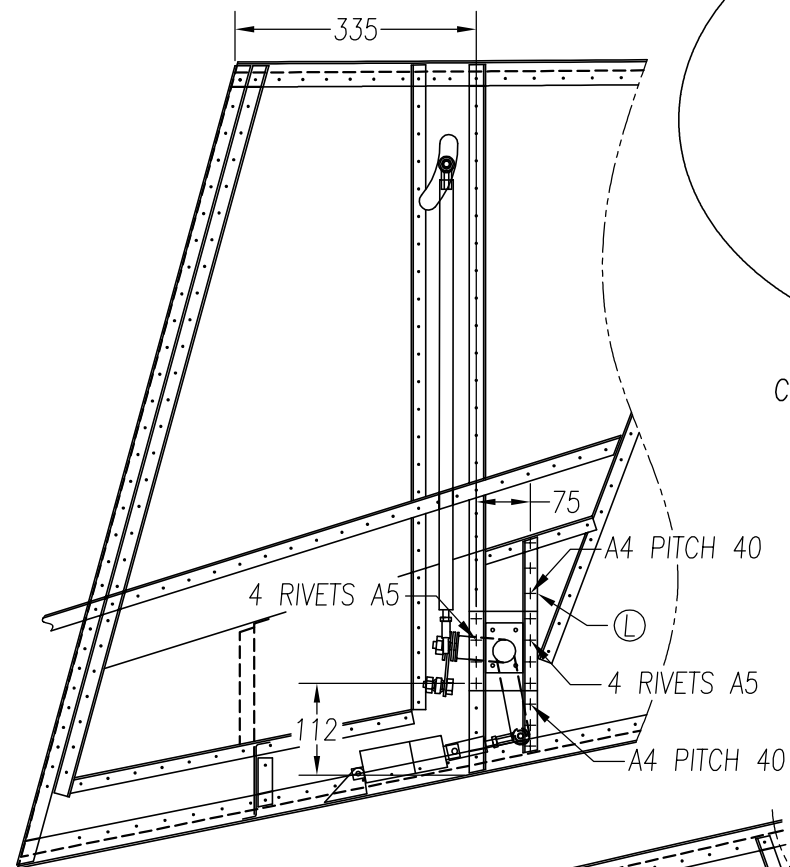
⑨ TORQUE TUBE END PLATE  
4130 t=0.080inch (1 req'd)  
WELDED ASSEMBLY



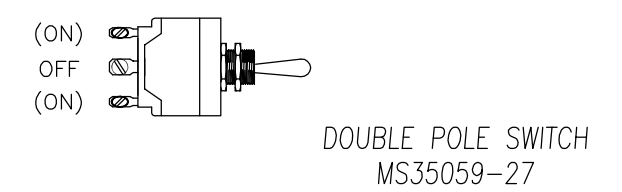
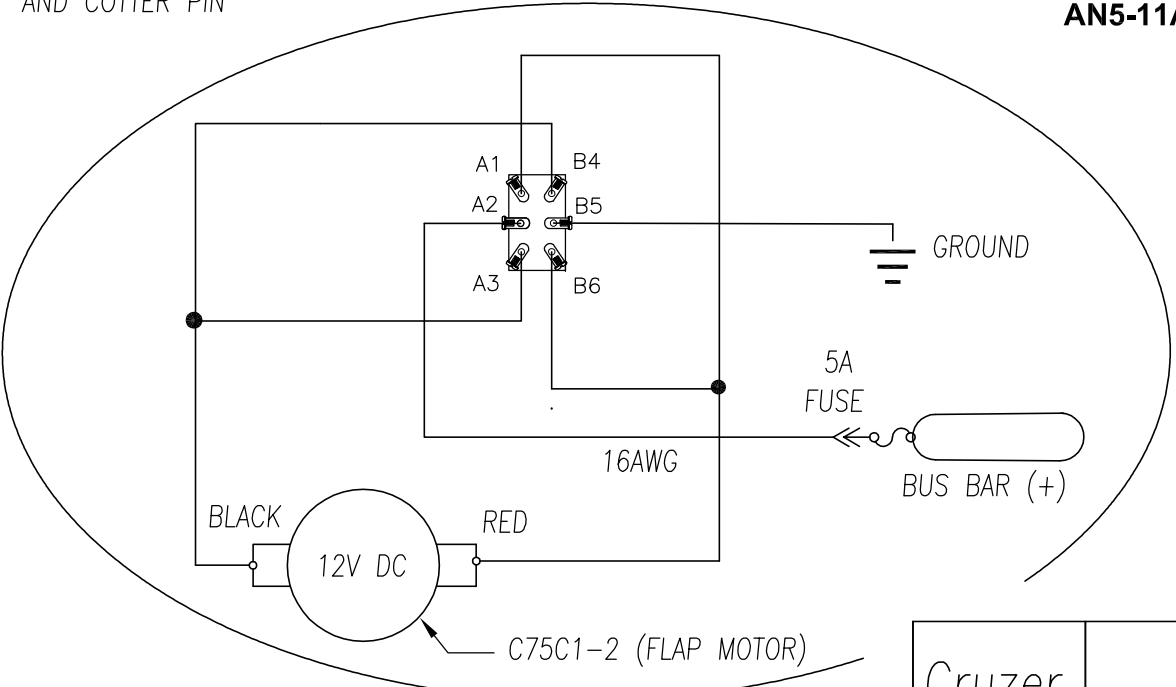
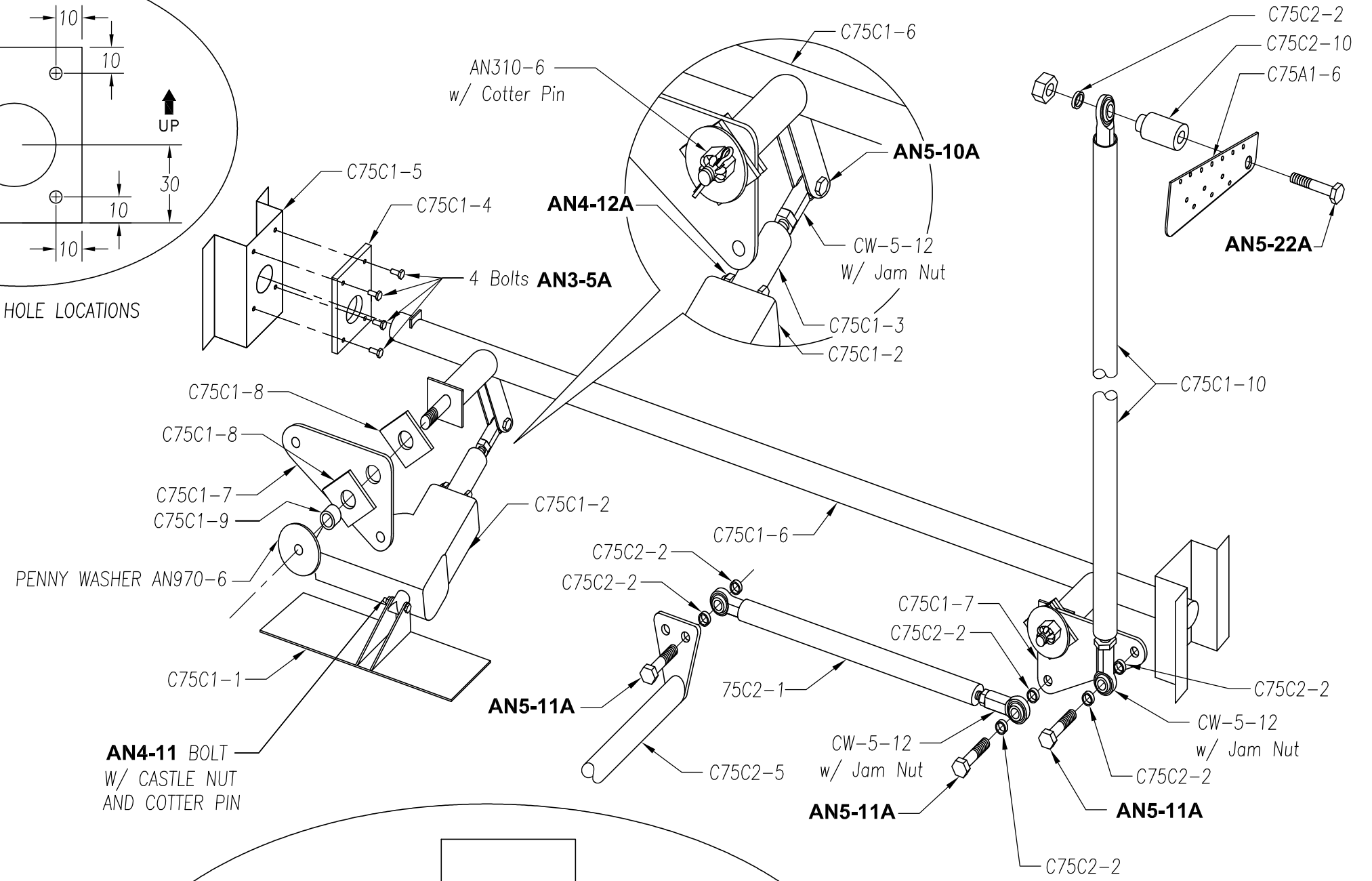
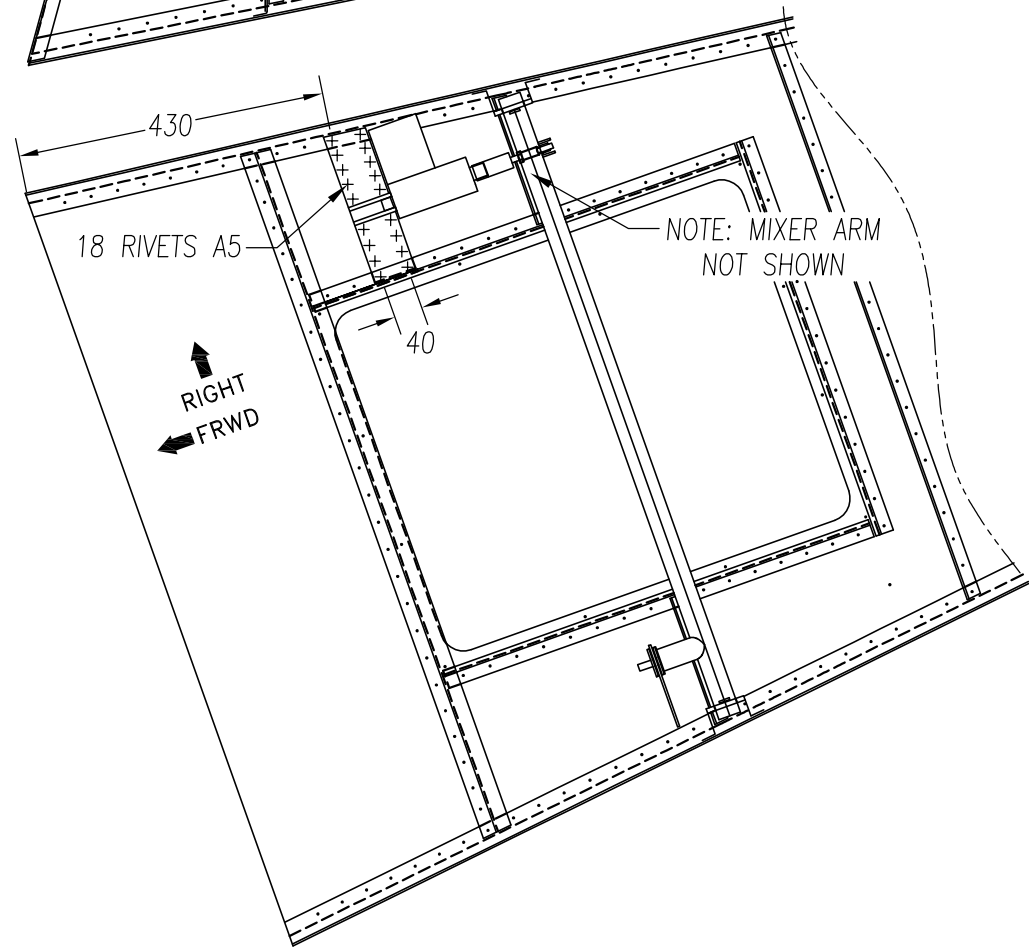
⑩ END PLATE GUSSETS  
t=0.063inch 6061 T6 (2 req'd)



⑦ Flaperon Mass Balance  
Steel Welded Assembly (4 req'd)



C75C1-4 BOLT HOLE LOCATIONS

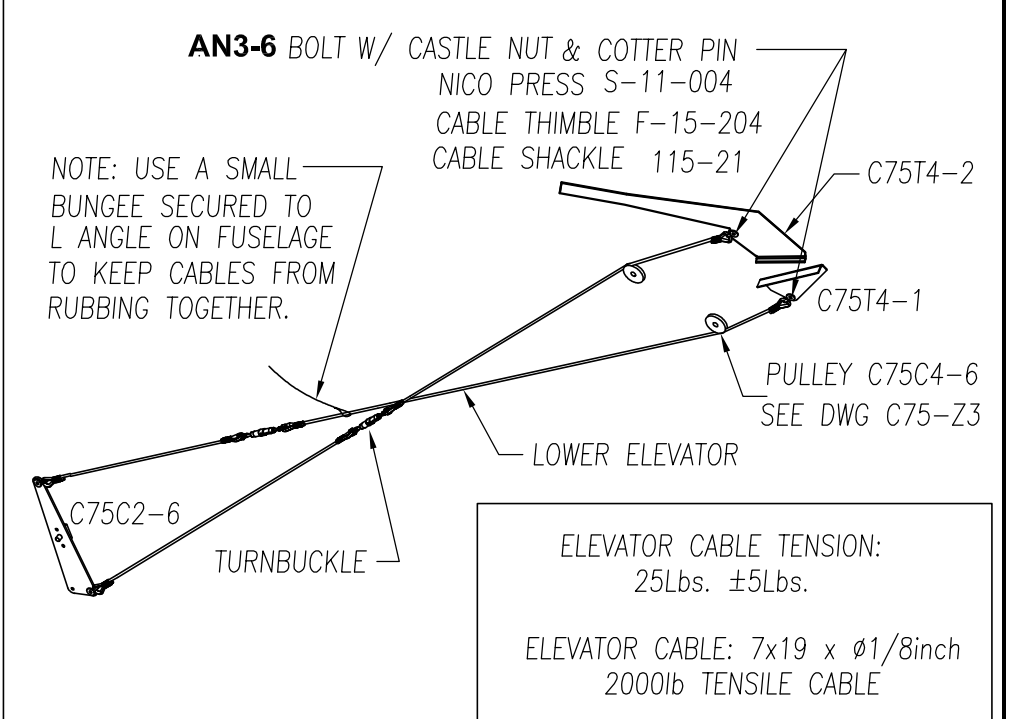
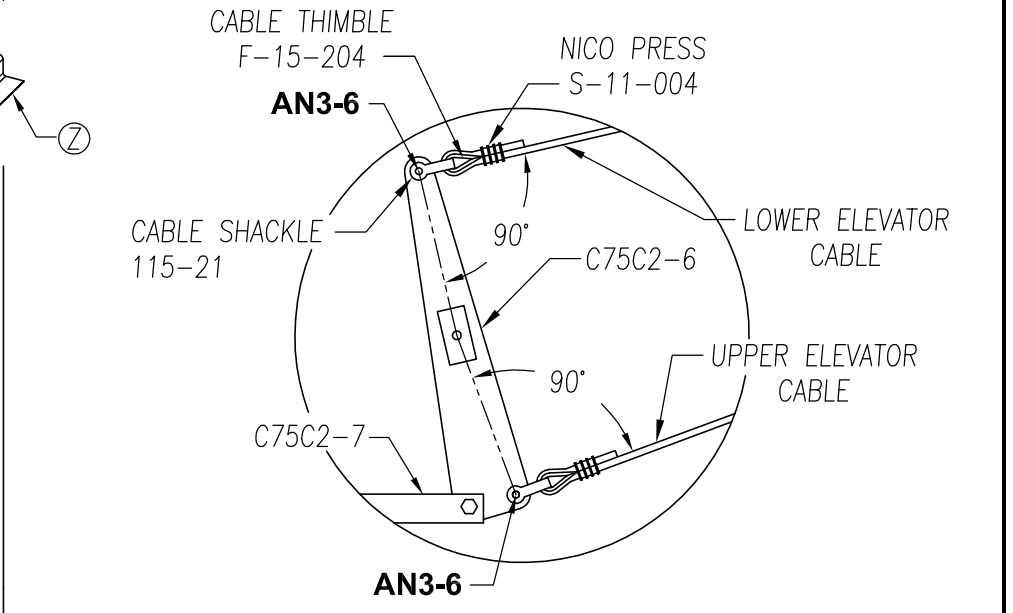
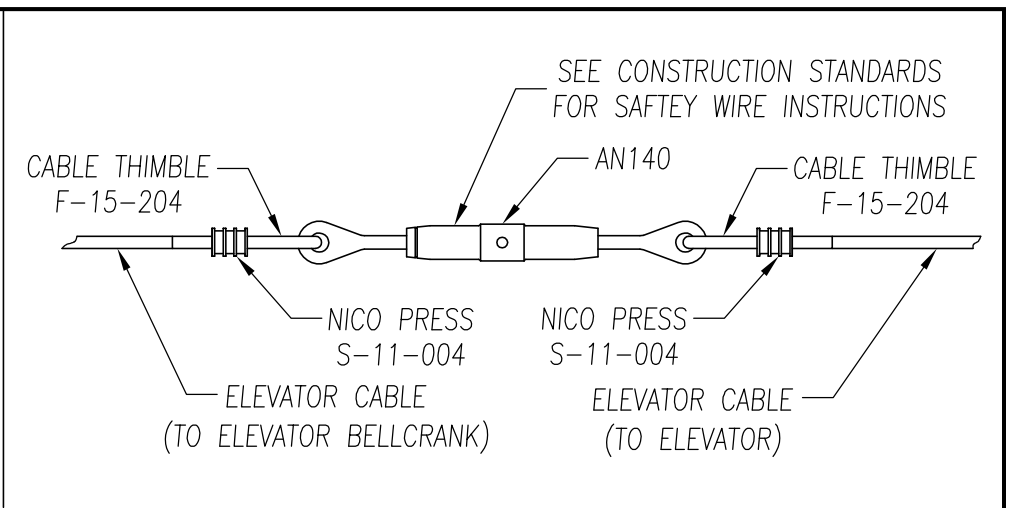
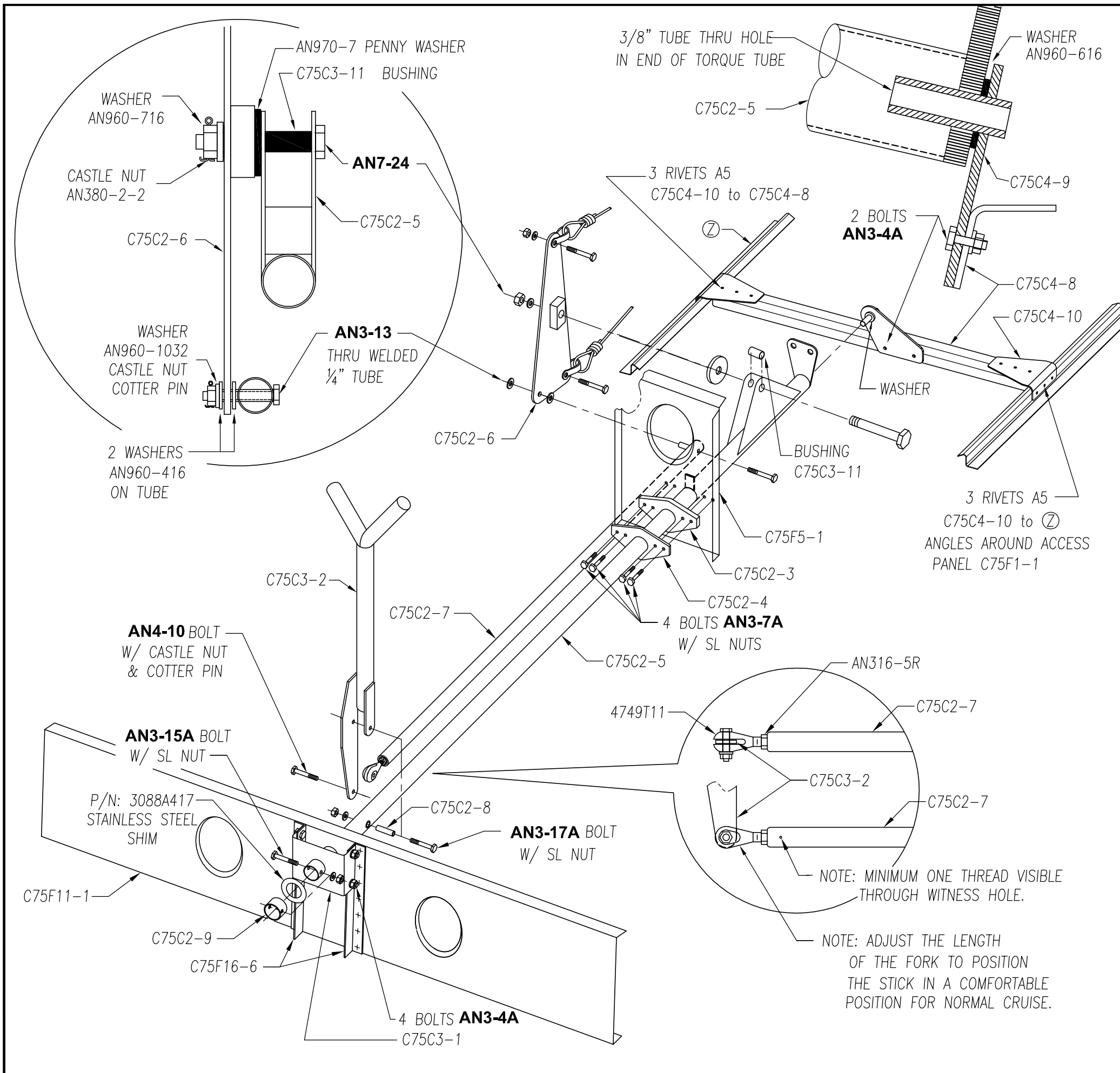


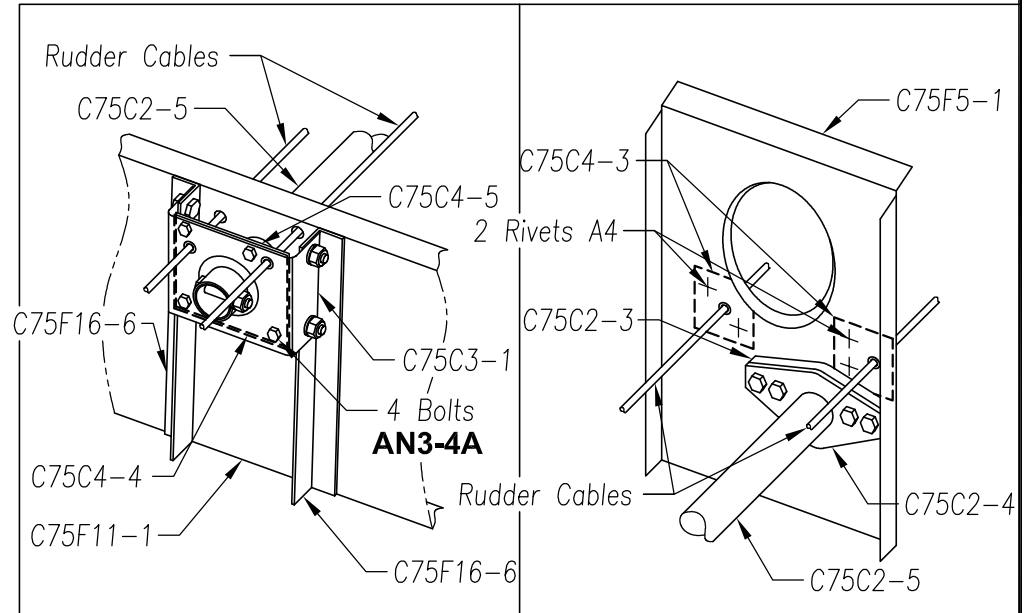
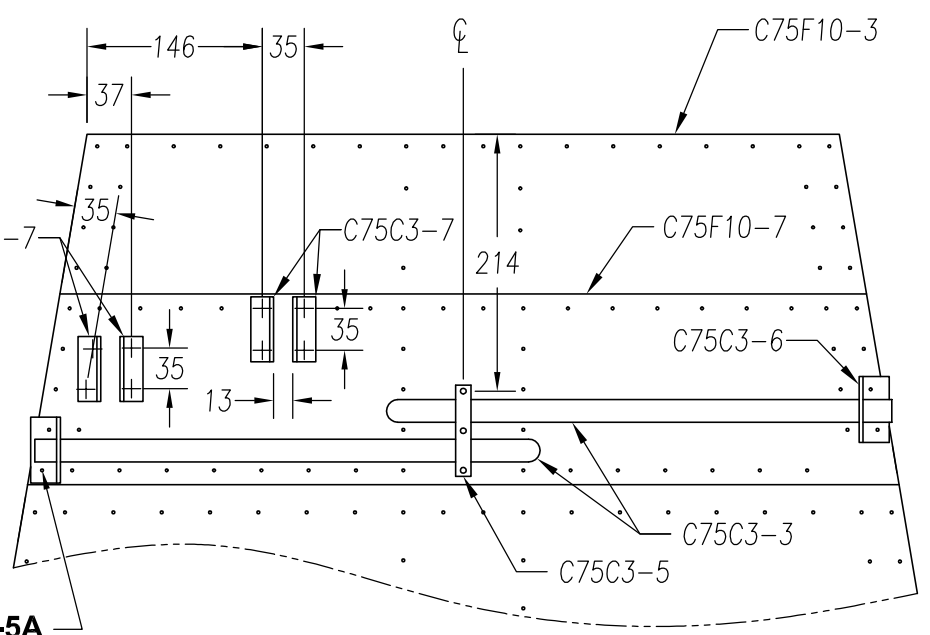
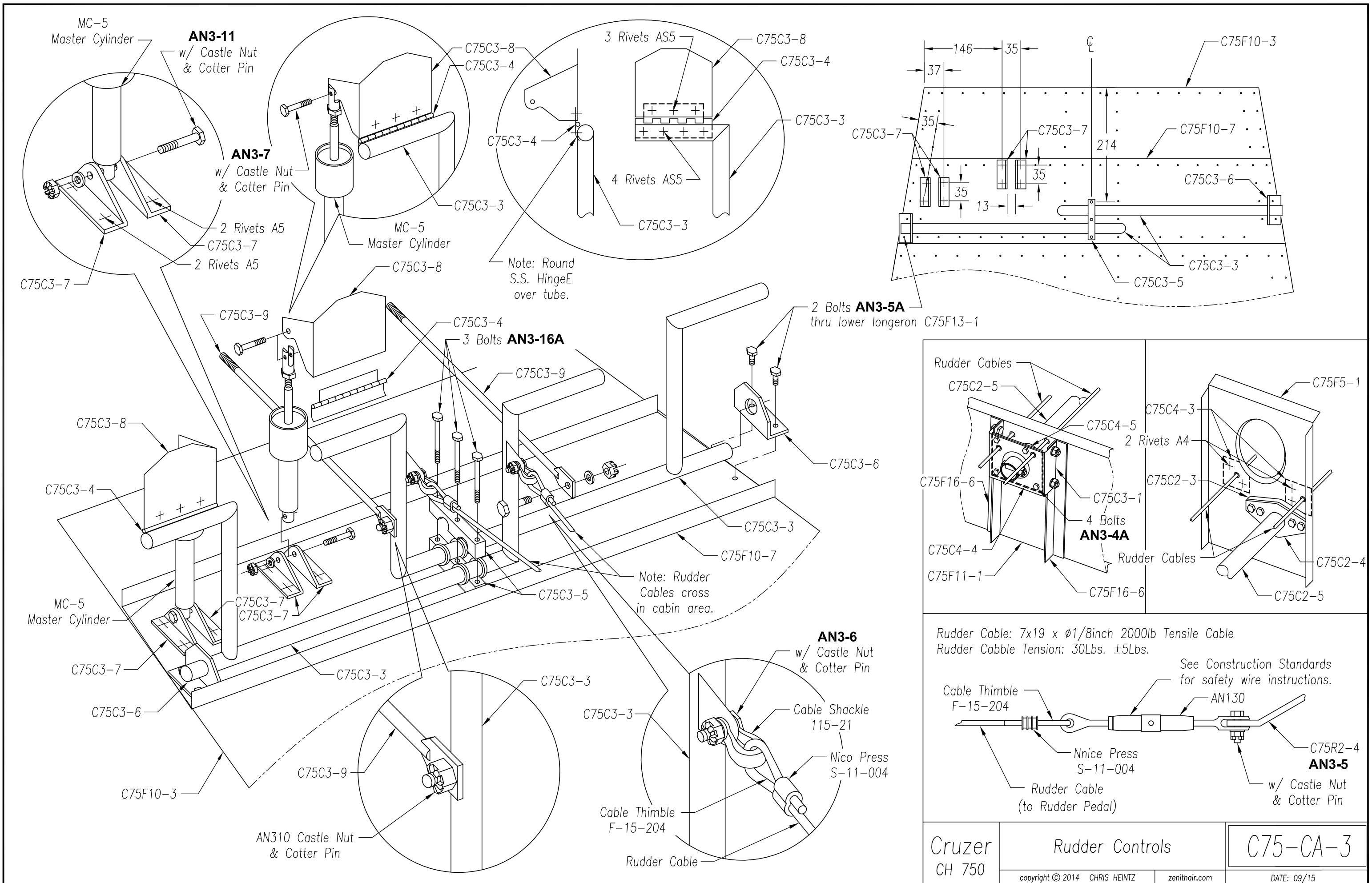
FLAP CIRCUIT

Cruzer  
CH 750

Flaperon Controls

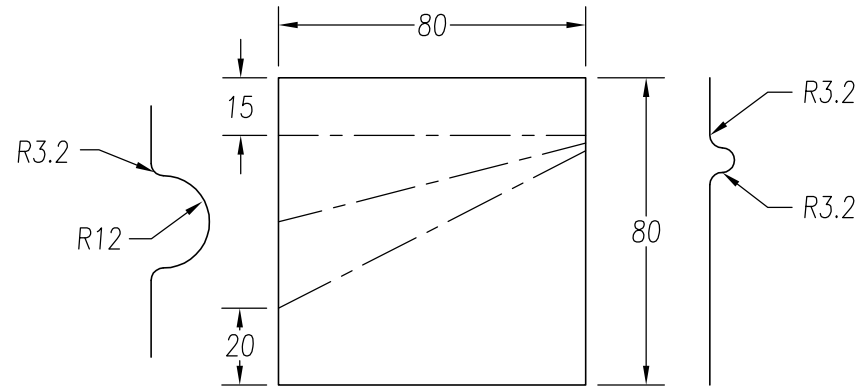
C75-CA-1



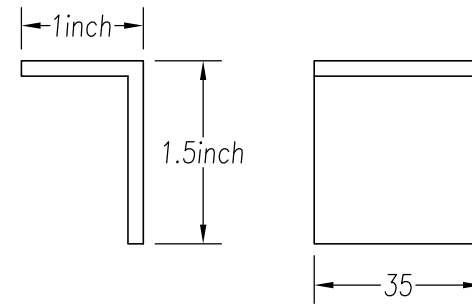


Rudder Cable: 7x19 x  $\phi$ 1/8inch 2000lb Tensile Cable  
 Rudder Cable Tension: 30Lbs.  $\pm$ 5Lbs.

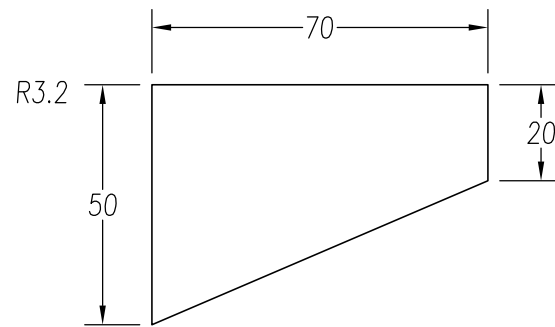
See Construction Standards for safety wire instructions.



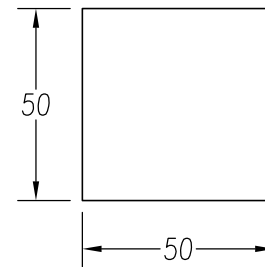
⑤  $\Delta$  RUDDER CABLE OUTLET FAIRING  
 $t=0.016$  inch 6061-T6 (2 req'd)



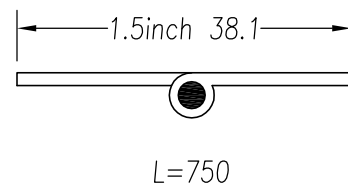
⑩  $\Delta$  UPPER ELEVATOR CONTROL STOP  
 $1$  inch x  $1 \frac{1}{2}$  inch  $t=0.125$  inch  
 EXT 6061-T6 (1 req'd)



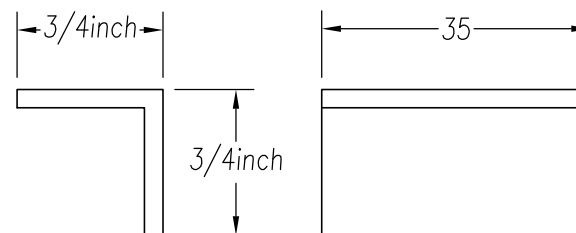
⑥  $\Delta$  RUDDER STOPS  
 $t=0.125$  inch 6061-T6 (2 req'd)



⑪  $\Delta$  LOWER ELEVATOR CONTROL STOP  
 NYLON N66  $t=0.125$  inch

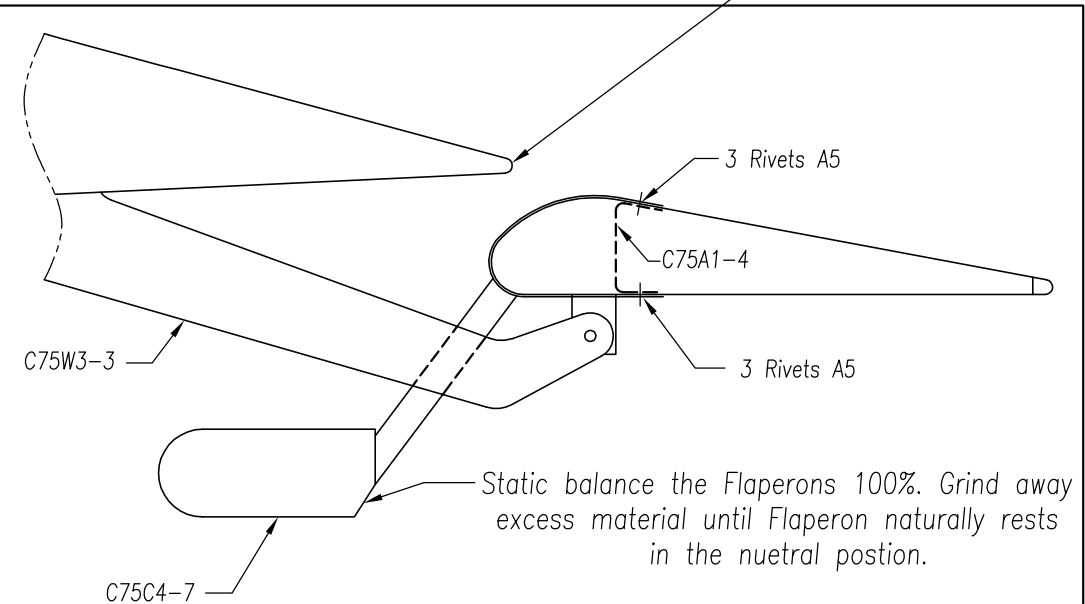
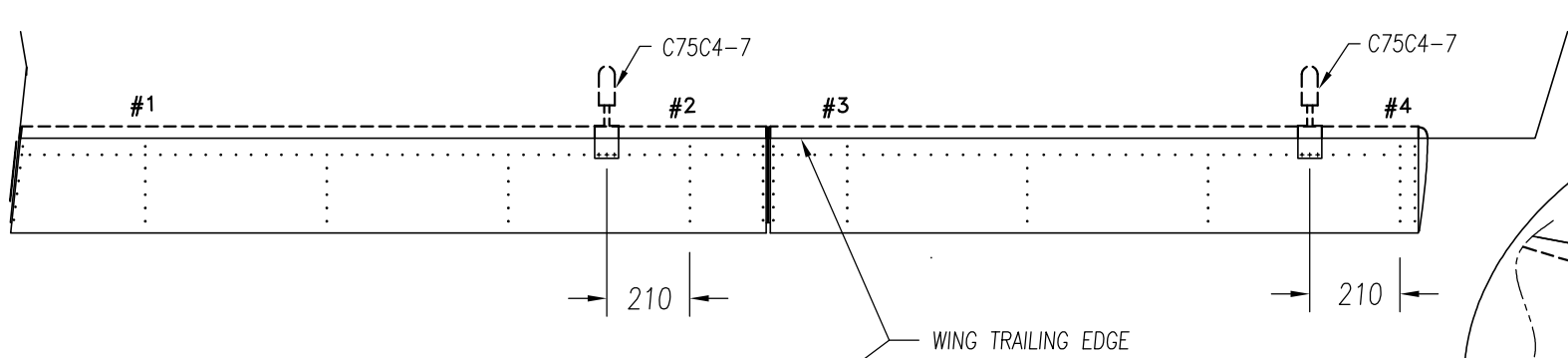


⑧  $\Delta$  DOOR HINGE  
 MS20257-4 (2 req'd)



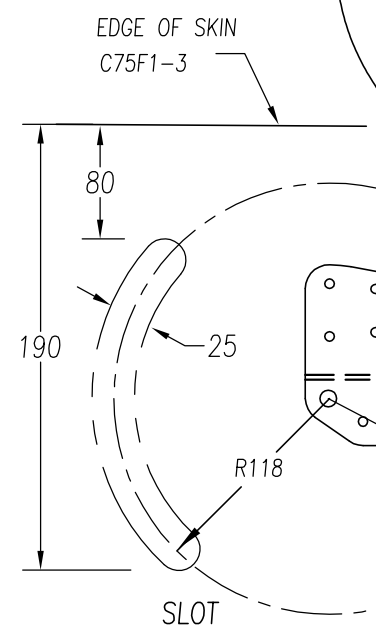
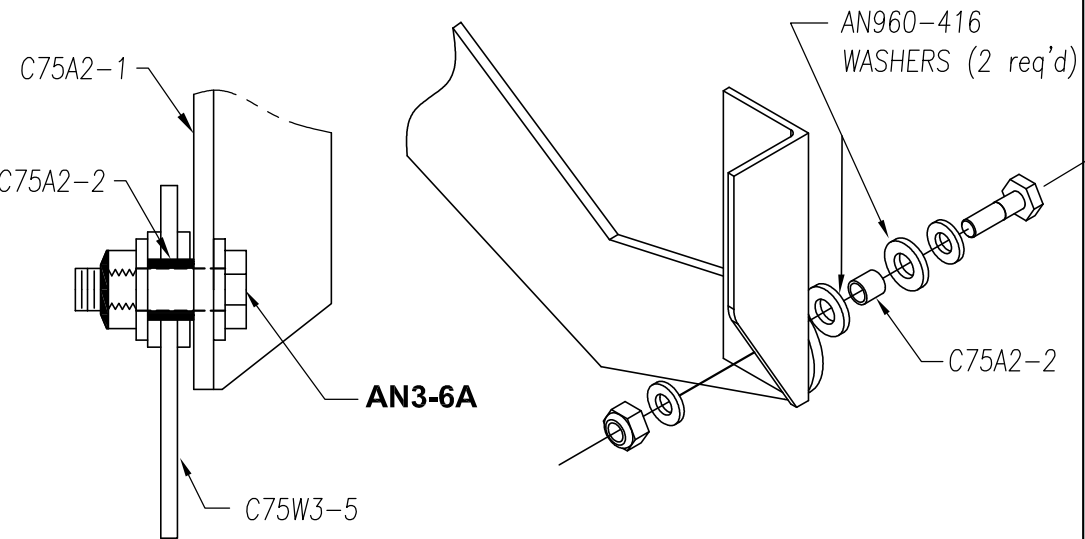
⑫  $\Delta$  FLAPERON CONTROL STOP  
 $\frac{3}{4}$  inch x  $\frac{3}{4}$  inch  $t=0.093$  inch  
 EXT 6061-T6 (2 req'd)

Cruzer CH 750	Stops, & Fairings		C75-Z-1
	copyright © 2014 CHRIS HEINTZ	zenithair.com	DATE: 1/16



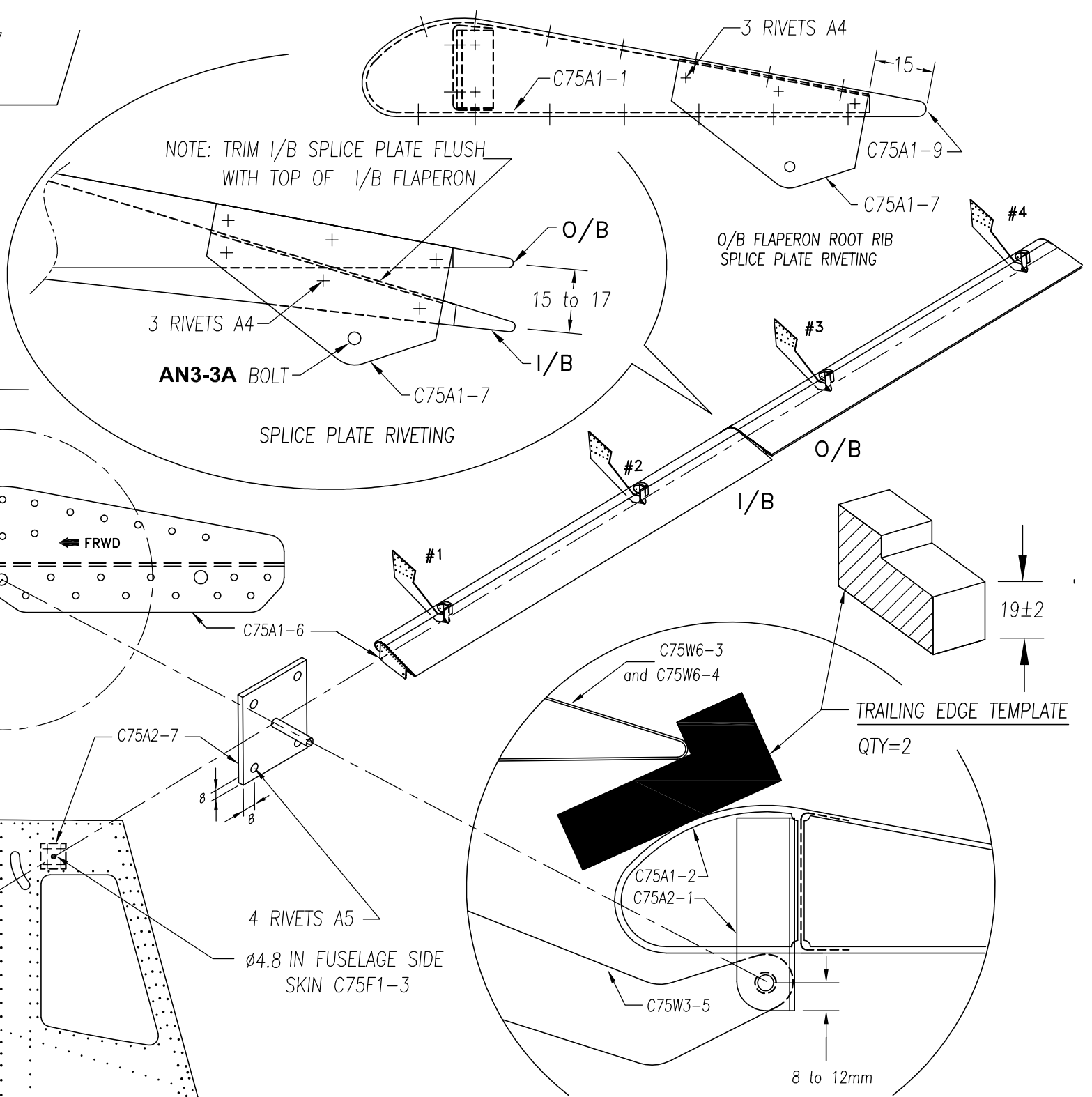
Note: The Flaperons MUST be rebalanced after any change in weight has occurred to the Flaperons, including painting or repairs.

Note: The Flaperon Control Rods must be DISCONNECTED from the Flaperons before balancing the Flaperons.



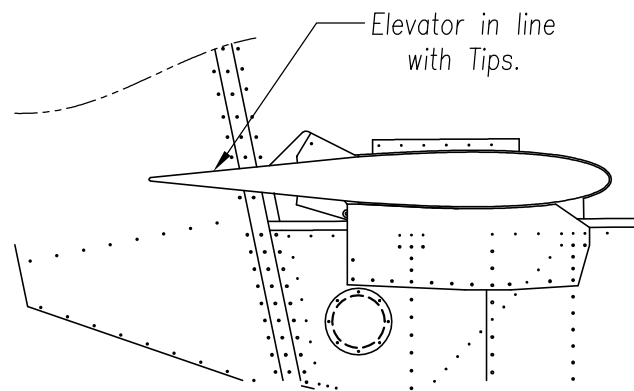
THE SLOT FOR THE VERTICAL ROD C75C1-10 IS CENTERED ON THE PIN (FLAPERON HINGE LINE).

THE ROOT HINGE PIN C75A2-7 GOES THROUGH THE FLAPERON HINGE LINE HOLE IN C75A1-6.

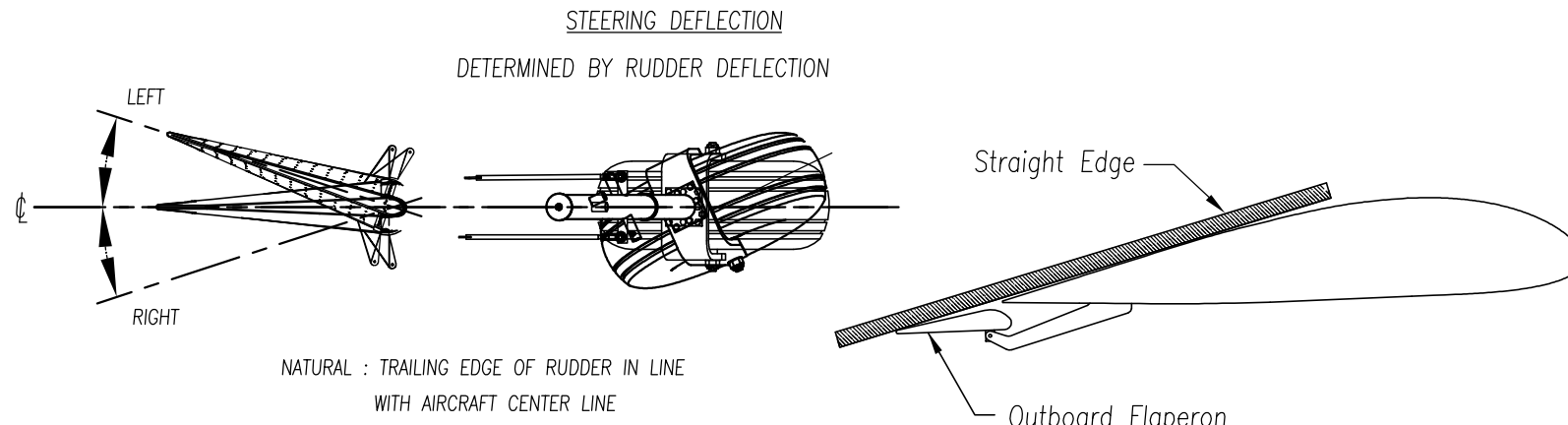


FLAPERON TO WING: Hold the flaperon in the neutral position and use the trailing edge template to maintain even spacing along the wing trailing edge. Transfer the holes in the arm C75W3-5 to the bracket C75A2-1. Check fore and aft edge distance and drill the  $\varnothing 4.8$  hole.

Cruzer CH 750	Flaperon Installation on Wing	C75-ZA-5
	Flaperon Mass Balancing	
	copyright © 2014 CHRIS HEINTZ	zenithair.com
		DATE: 09/15



Elevator Neutral Position

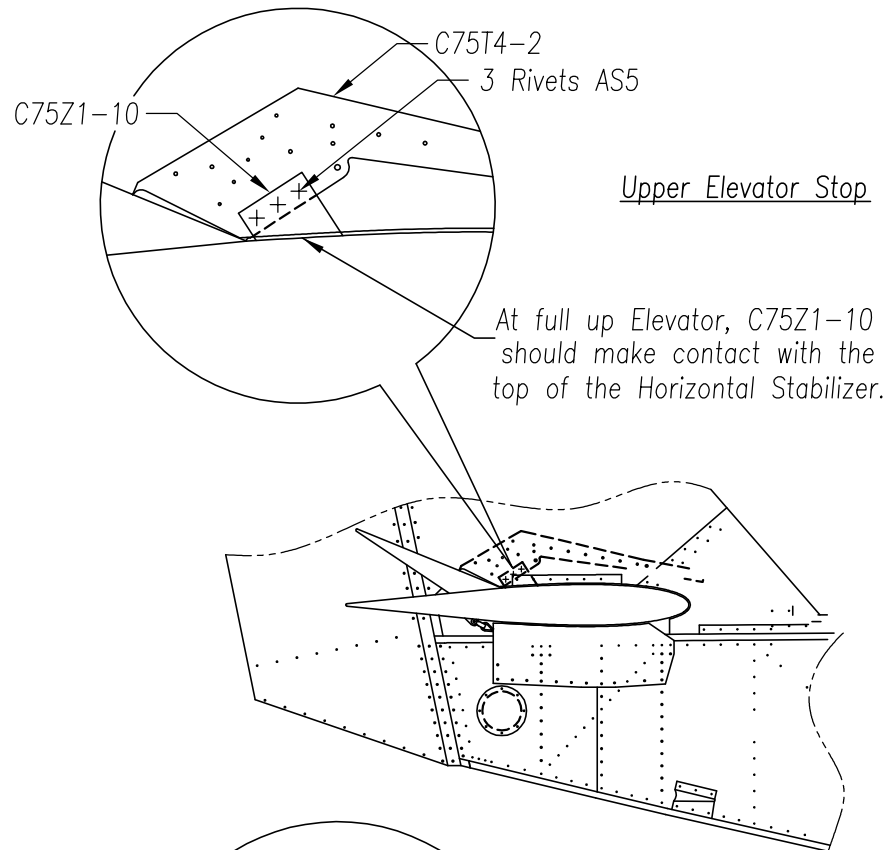


NATURAL : TRAILING EDGE OF RUDDER IN LINE WITH AIRCRAFT CENTER LINE

Elevator Neutral Position

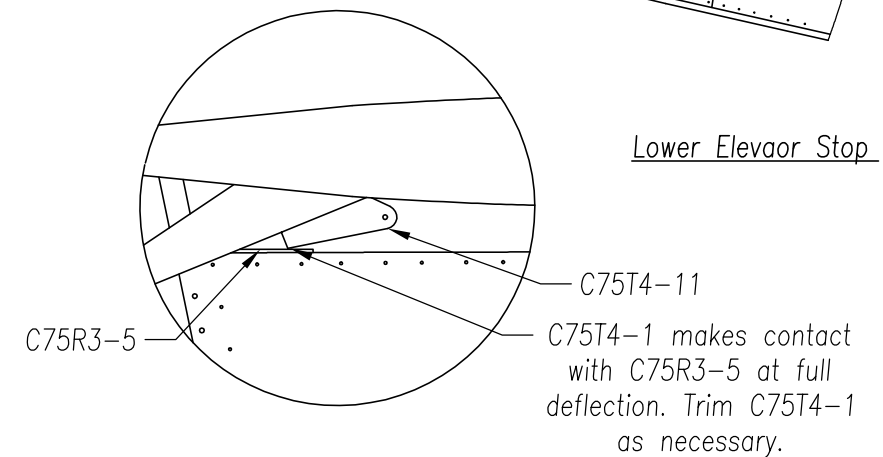
Flaperon Neutral Position

<u>ELEVATOR DEFLECTION</u>	UP: 28° ±2 DOWN 18° ±2 (TOTAL TRAVEL: 46°)
<u>RUDDER DEFLECTION</u>	LEFT: 20° ±1° RIGHT: 20° ±1° (TOTAL TRAVEL LEFT TO RIGHT 40°)
<u>AILERON DEFLECTION</u>	UP: 13° ±1° DOWN: 13° ±1° (TOTAL TRAVEL UP TO DOWN: 26°)
<u>FLAP DEFLECTION</u>	DOWN: 15° MAXIMUM
<u>TRIM TAB DEFLECTION</u>	Ref. DWG C75-TA-2



Upper Elevator Stop

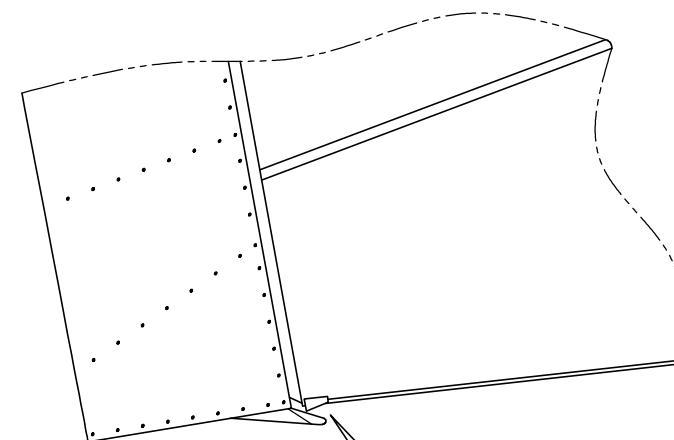
At full up Elevator, C75Z1-10 should make contact with the top of the Horizontal Stabilizer.



Lower Elevator Stop

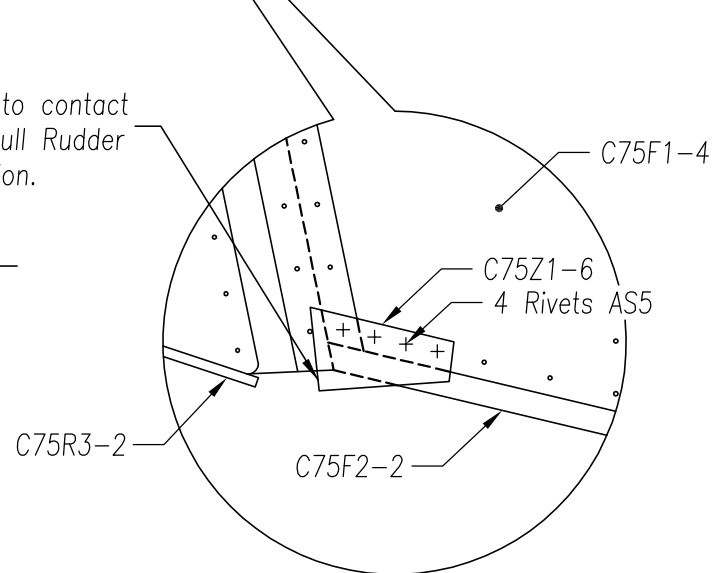
C75T4-1 makes contact with C75R3-5 at full deflection. Trim C75T4-1 as necessary.

Move the rudder pedals to check the nose gear allows the rudder to make contact with the rudder stop

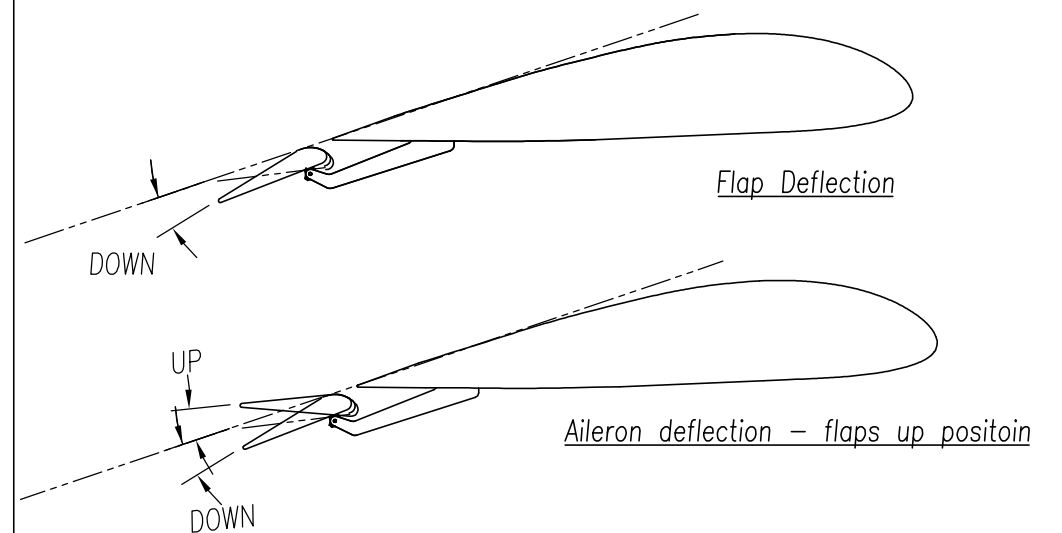


Set C75Z1-6 to contact C75R3-2 at full Rudder Deflection.

Rudder Stop

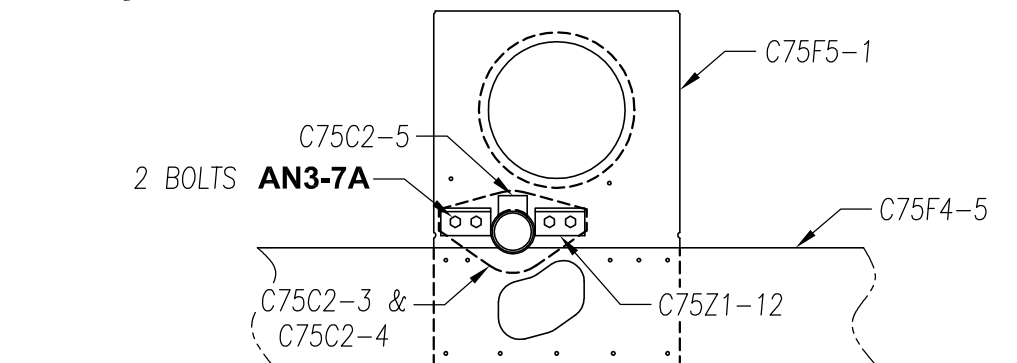


Check the Aileron deflection by moving the stick with the Flaps UP and with the flaps in the DOWN position.



Flap Deflection

Aileron deflection - flaps up position



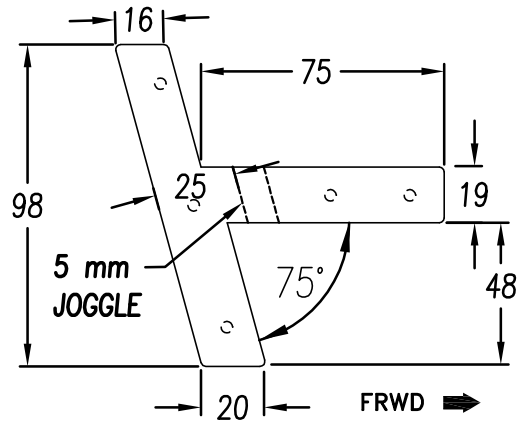
Aileron Control Stops

Cruzer  
CH 750

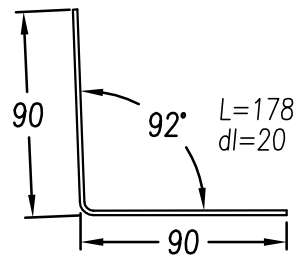
Control Deflections  
and Stops

C75-ZA-6

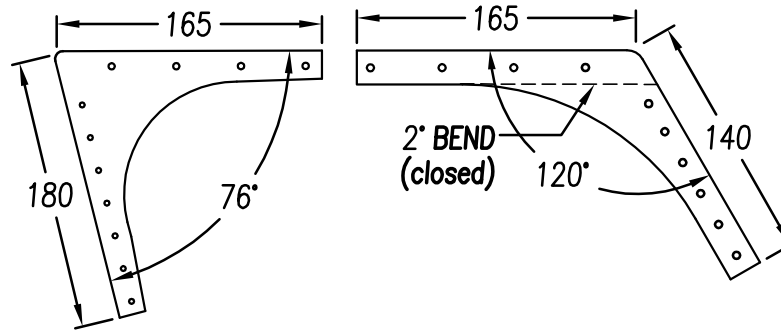




**1 HINGE GUSSET**  
4130N STEEL t=.080" (QTY=L+R)

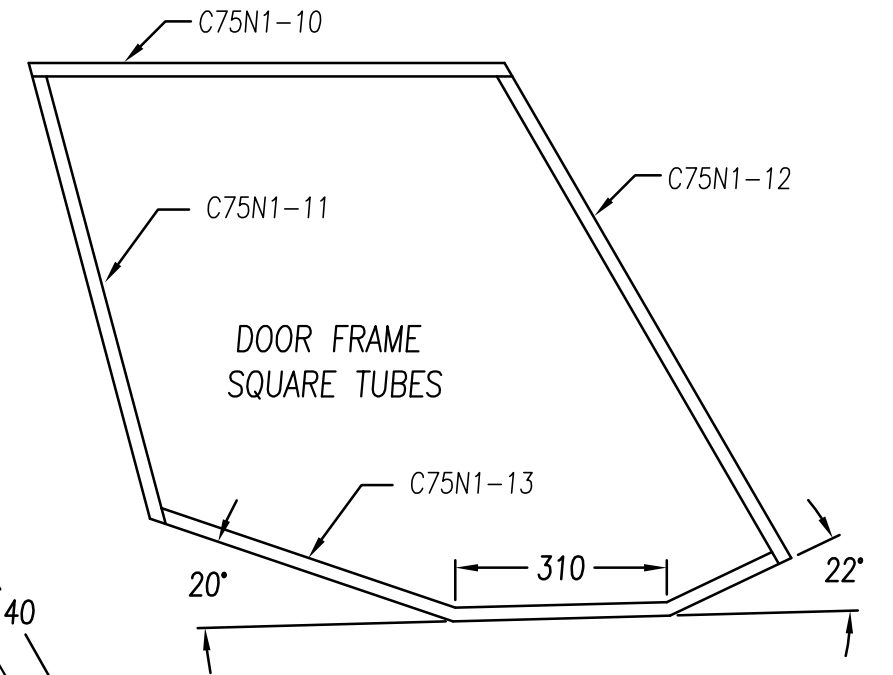


**2 FRONT CABIN FRAME GUSSET**  
4130 STEEL t=.080" (QTY=2)



**6 DOOR GUSSET #1**  
6061-T6 t=.063" (QTY=4)

**7 DOOR GUSSET #2**  
6061-T6 t=.063" (QTY=4)

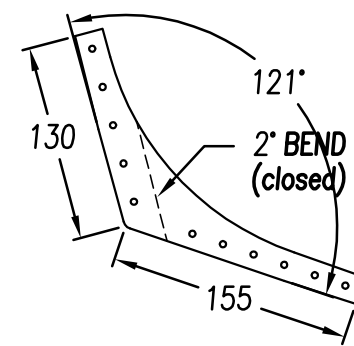


**10 TOP TUBE** length = 720  
6061-T6 SQUARE TUBE 3/4"x3/4" (QTY=2)

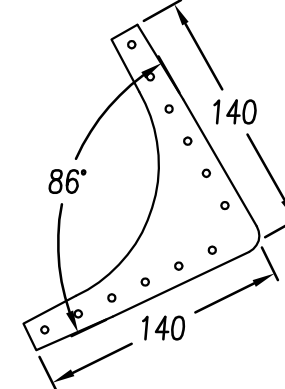
**11 REAR TUBE** length = 685  
6061-T6 SQUARE TUBE 3/4"x3/4" (QTY=2)

**12 FRONT TUBE** length = 830  
6061-T6 SQUARE TUBE 3/4"x3/4" (QTY=2)

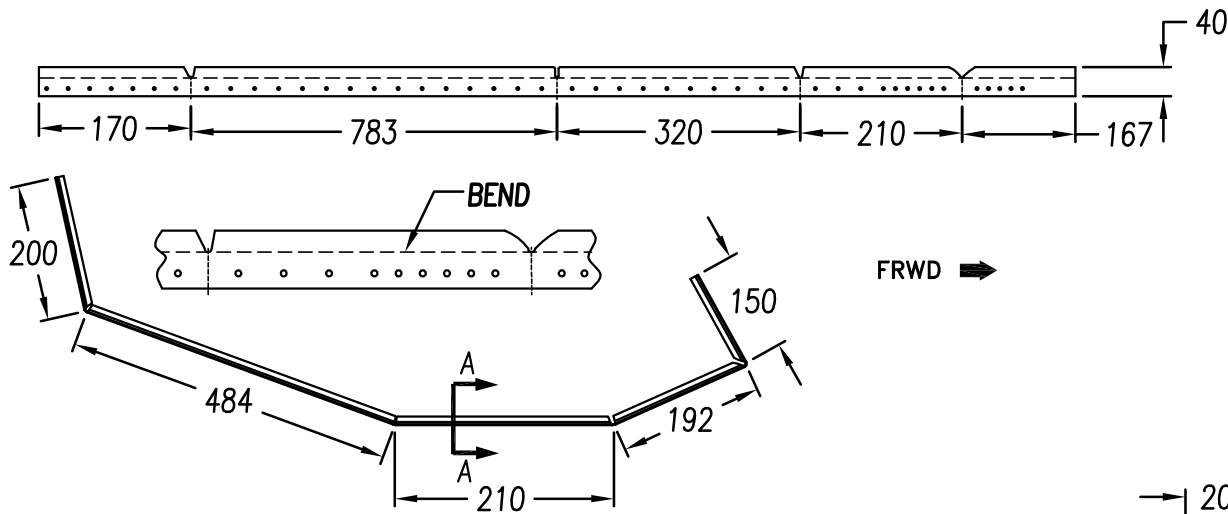
**13 BOTTOM TUBE (bent)** length = 1065  
6061-T6 SQUARE TUBE 3/4"x3/4" (QTY=2)



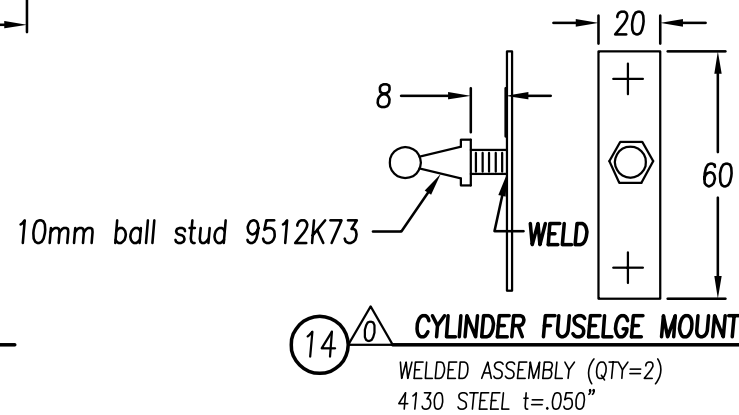
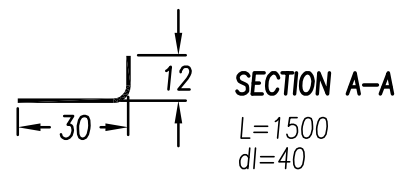
**8 DOOR GUSSET #3**  
6061-T6 t=.063" (QTY=4)



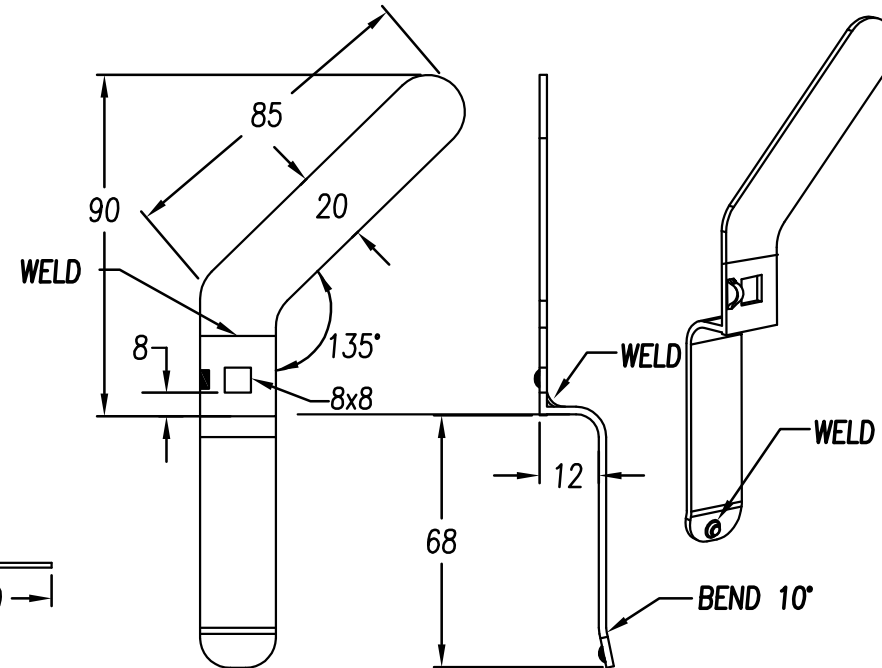
**9 DOOR GUSSET #4**  
6061-T6 t=.063" (QTY=4)



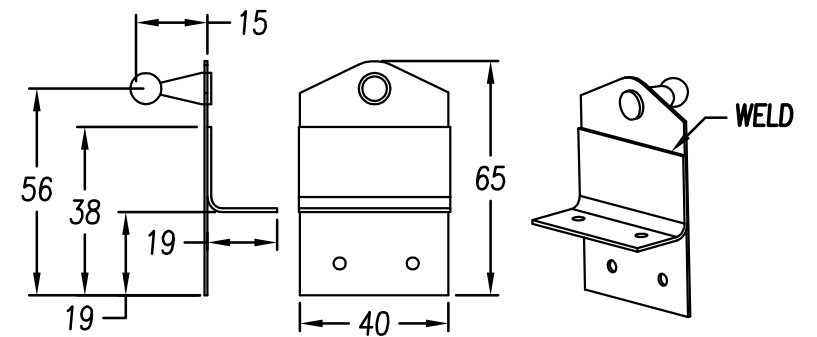
**3 FUSELAGE DOUBLER TRIM SUPPORT**  
6061-T6 t=.063" (QTY=L+R)



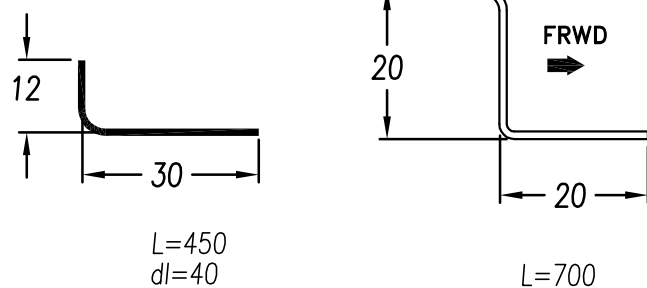
**14 CYLINDER FUSELGE MOUNT**  
WELDED ASSEMBLY (QTY=2)  
4130 STEEL t=.050"



**16 INSIDE DOOR HANDLE**  
4130 STEEL t=.050" (QTY=L+R)

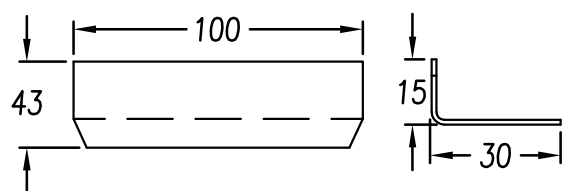


**17 CYLINDER DOOR MOUNT**  
4130 STEEL t=.050" (QTY=L+R)



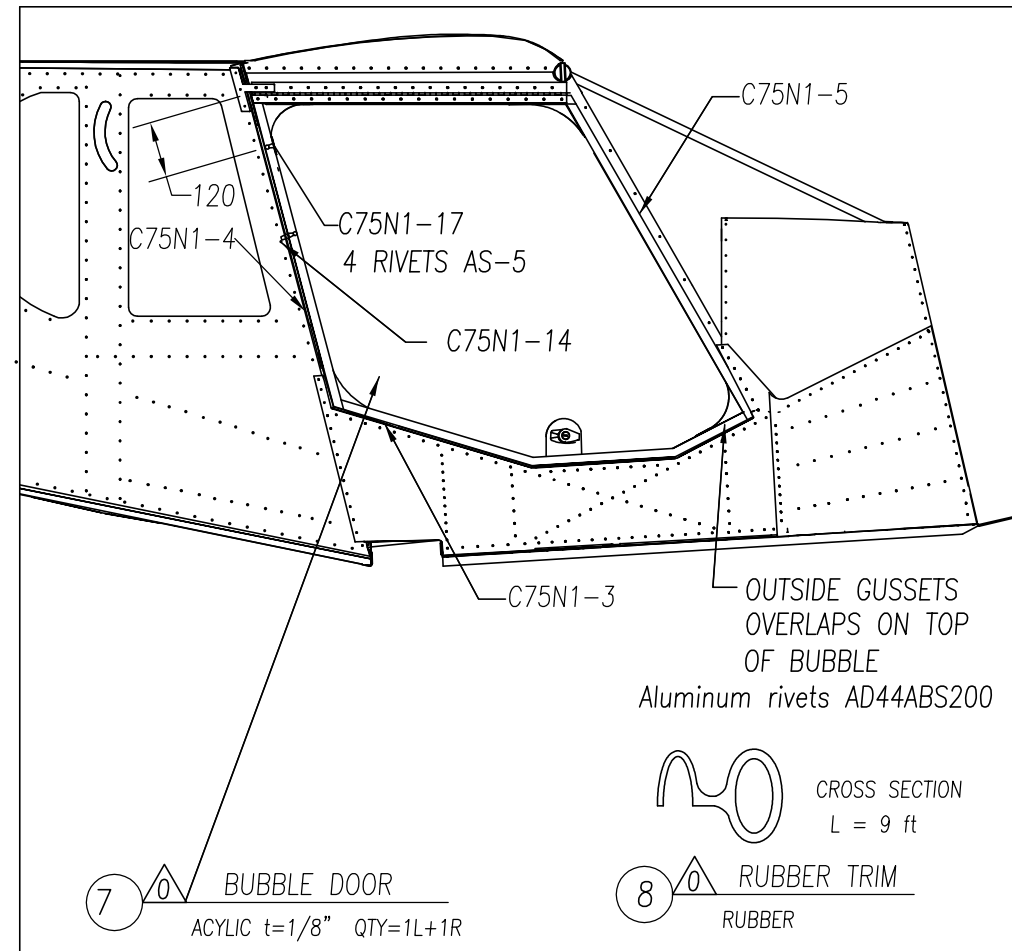
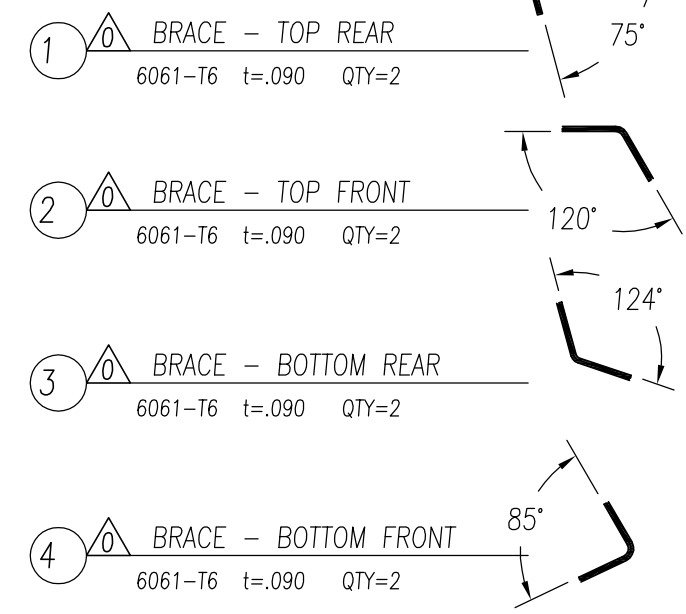
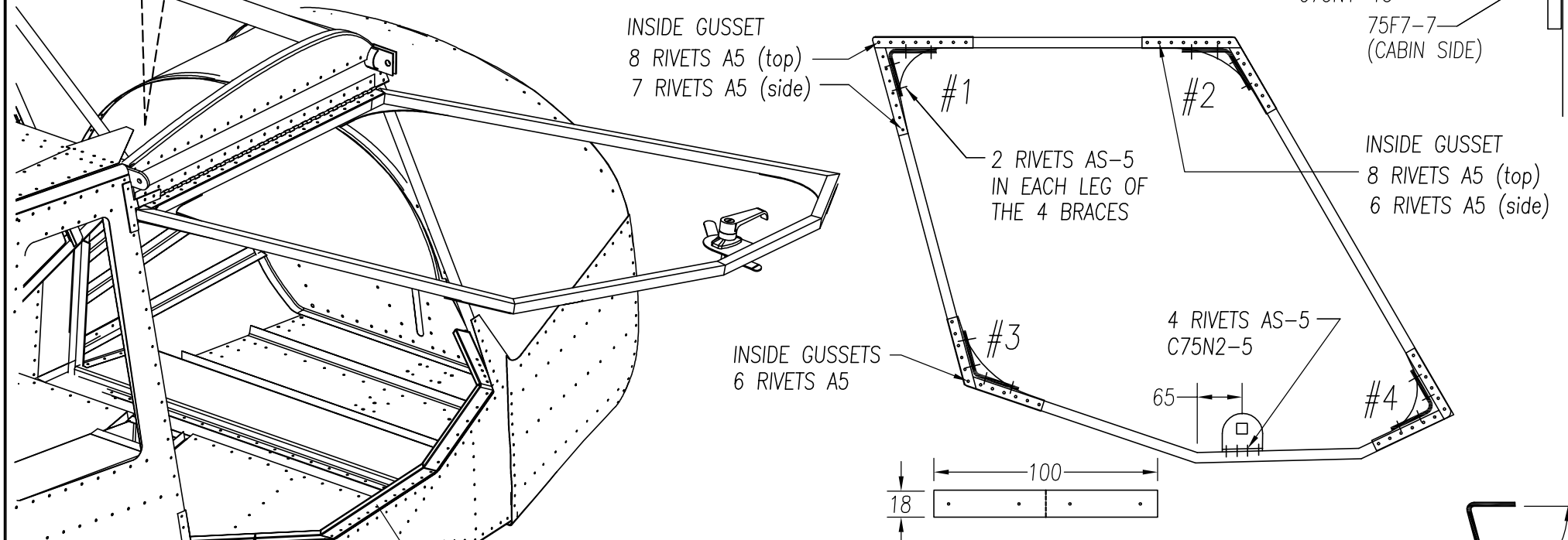
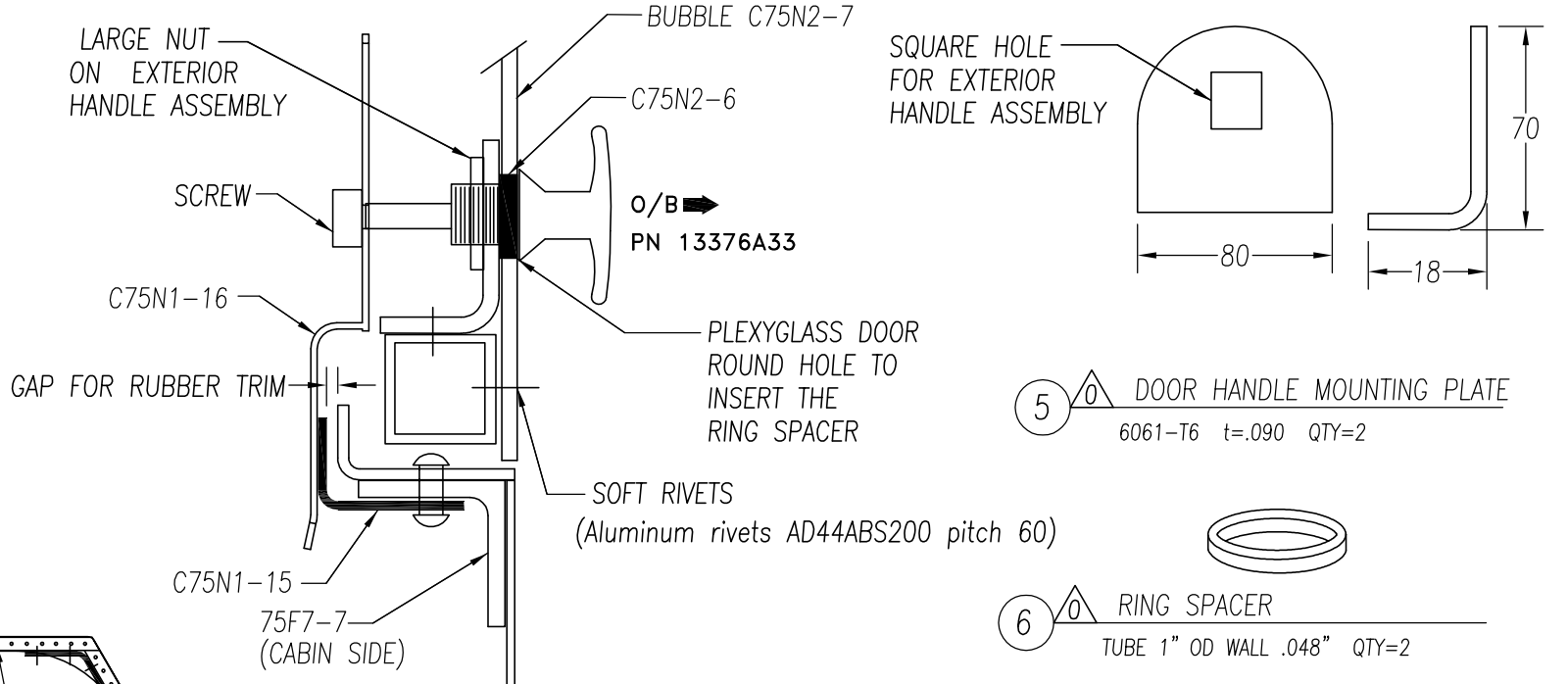
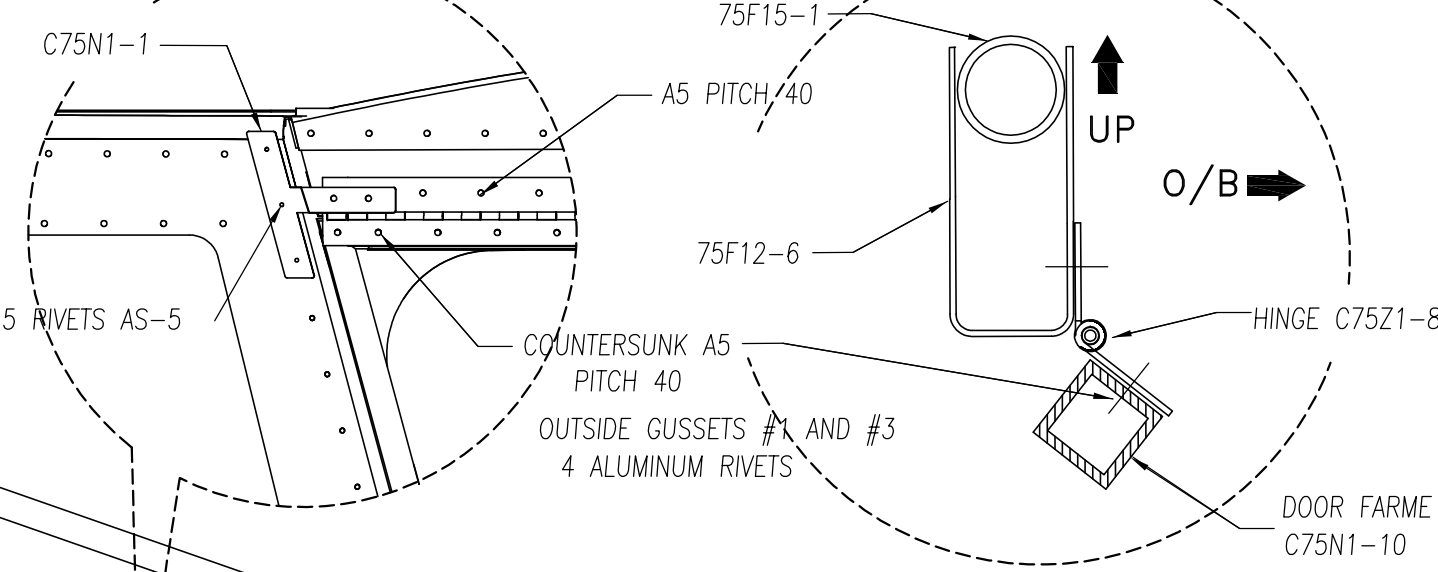
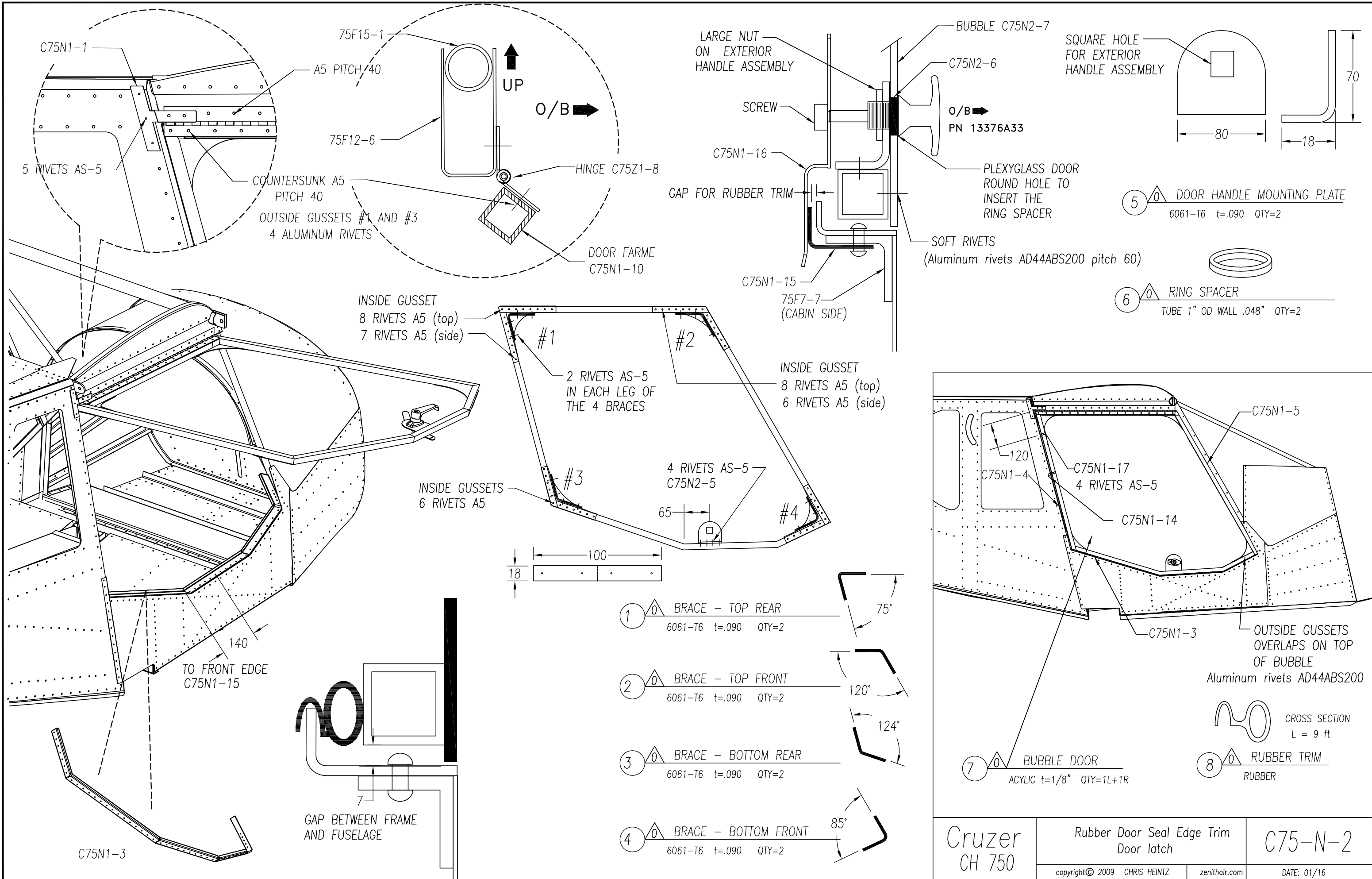
**4 DOOR POST TRIM SUPPORT**  
6061-T6 t=.032" (QTY=2)

**5 WINDSHIELD SIDE TRIM SUPPORT**  
6061-T6 t=.025" (QTY=2)



**15 STRIKER PLATE**  
STAINLESS STEEL t=.050" (QTY=2)

Cruzer CH 750	Cabin Doors	C75-N-1
	copyright© 2009 CHRIS HEINTZ zenithair.com	



Cruzer CH 750	Rubber Door Seal Edge Trim Door latch	C75-N-2
	copyright© 2009 CHRIS HEINTZ	zenithair.com

DATE: 01/16