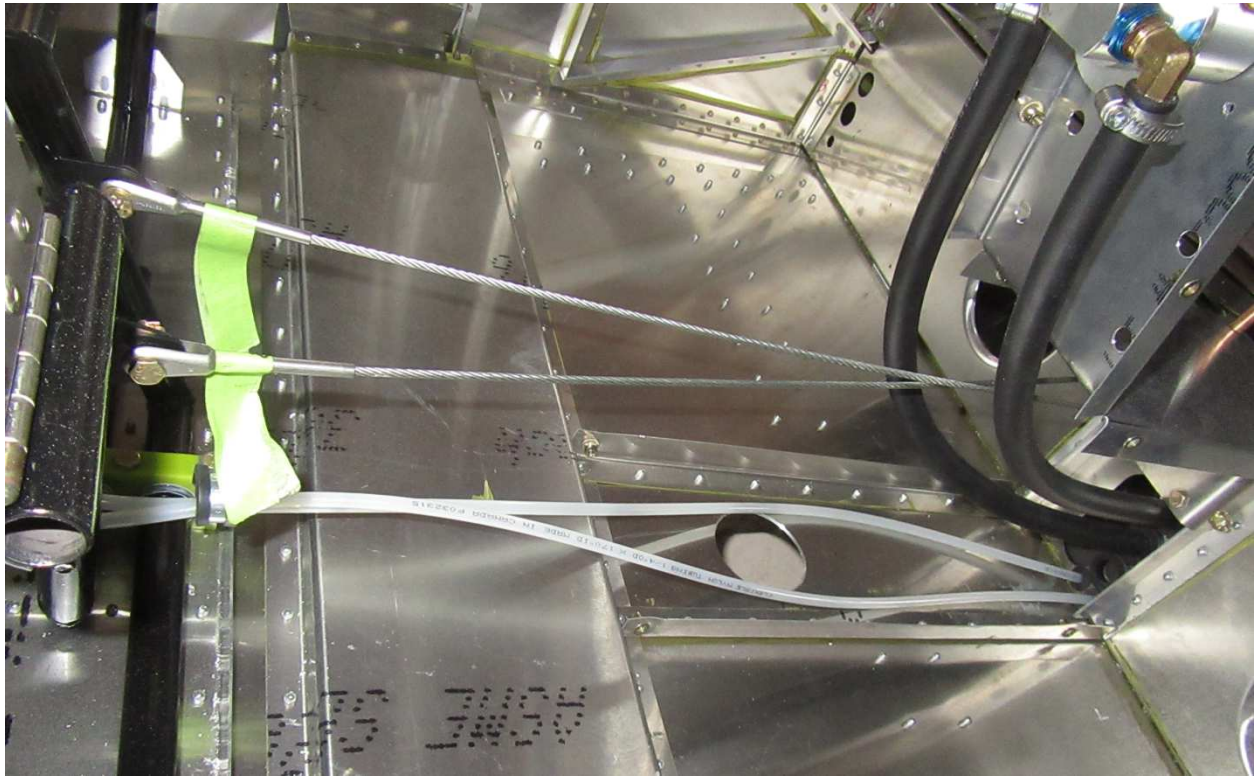


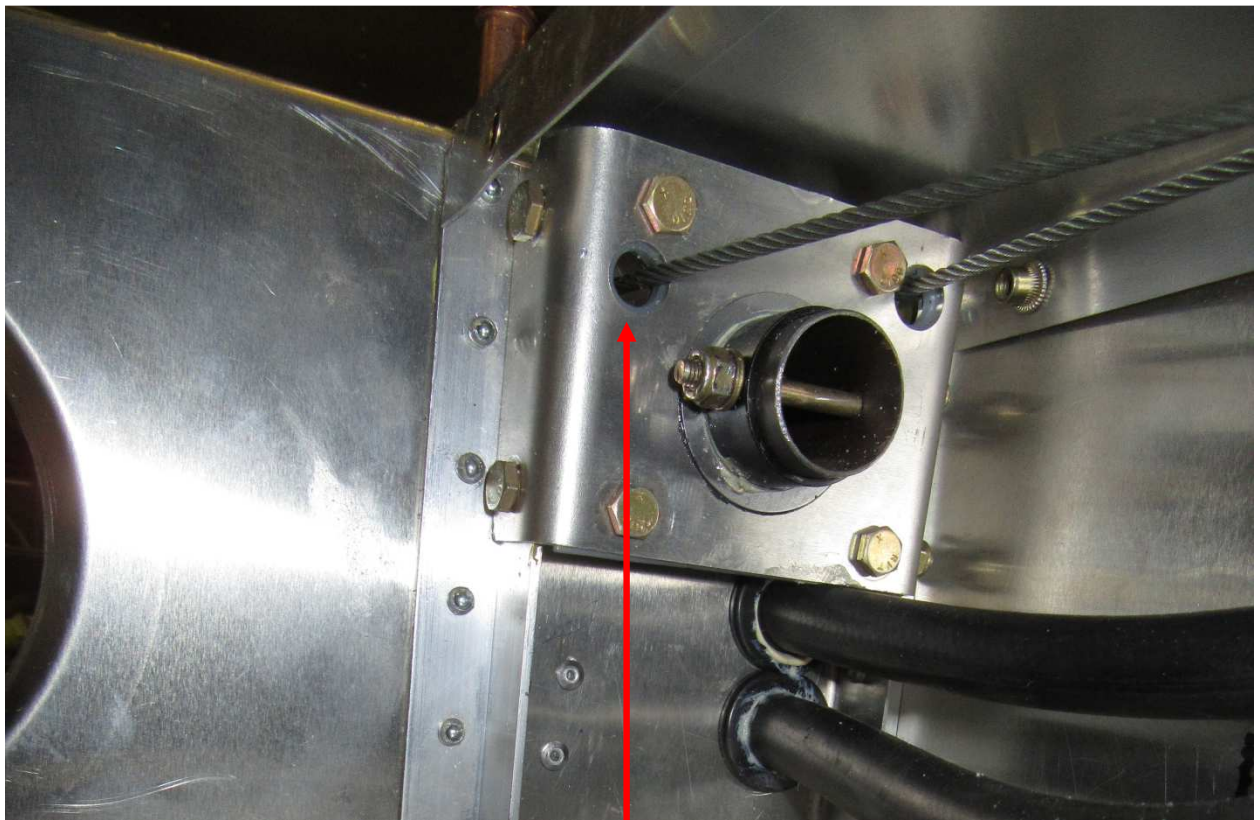
The steering rods connect the nose gear leg to the rudder pedals



Rudder pedals deflections are limited by the rudder stops and the nose gear leg.

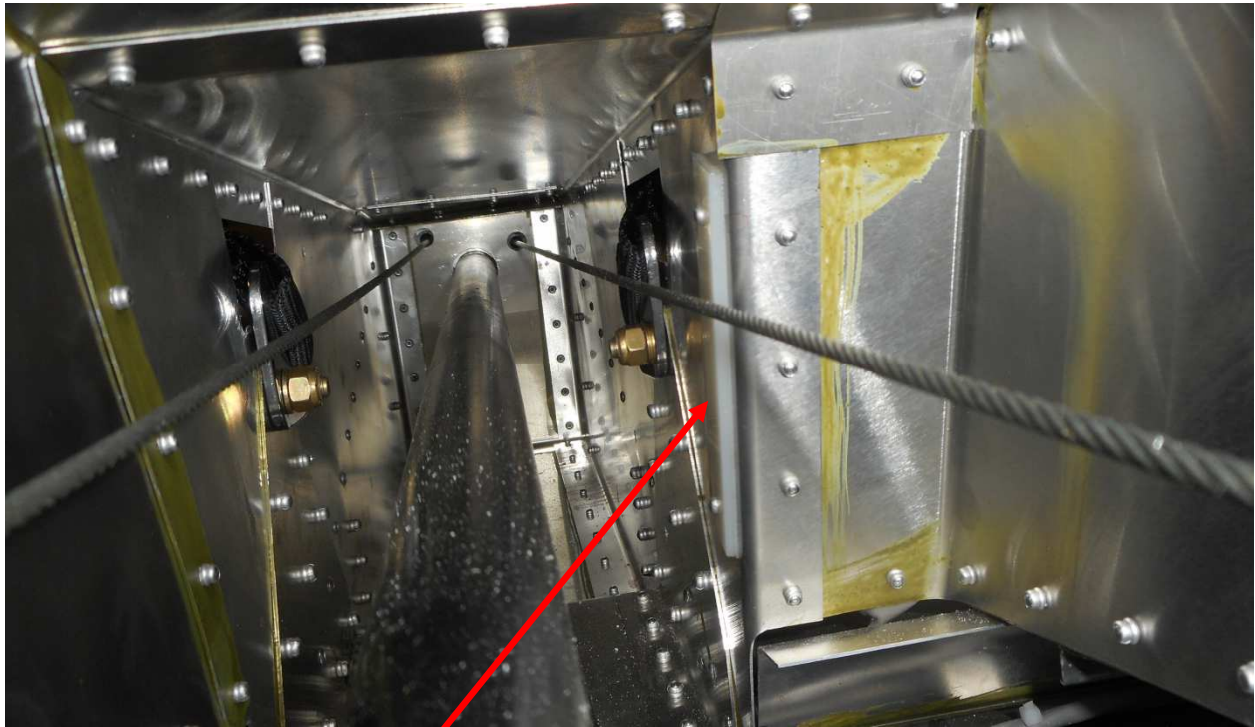


Cables cross between the rudder pedals and the seat channel



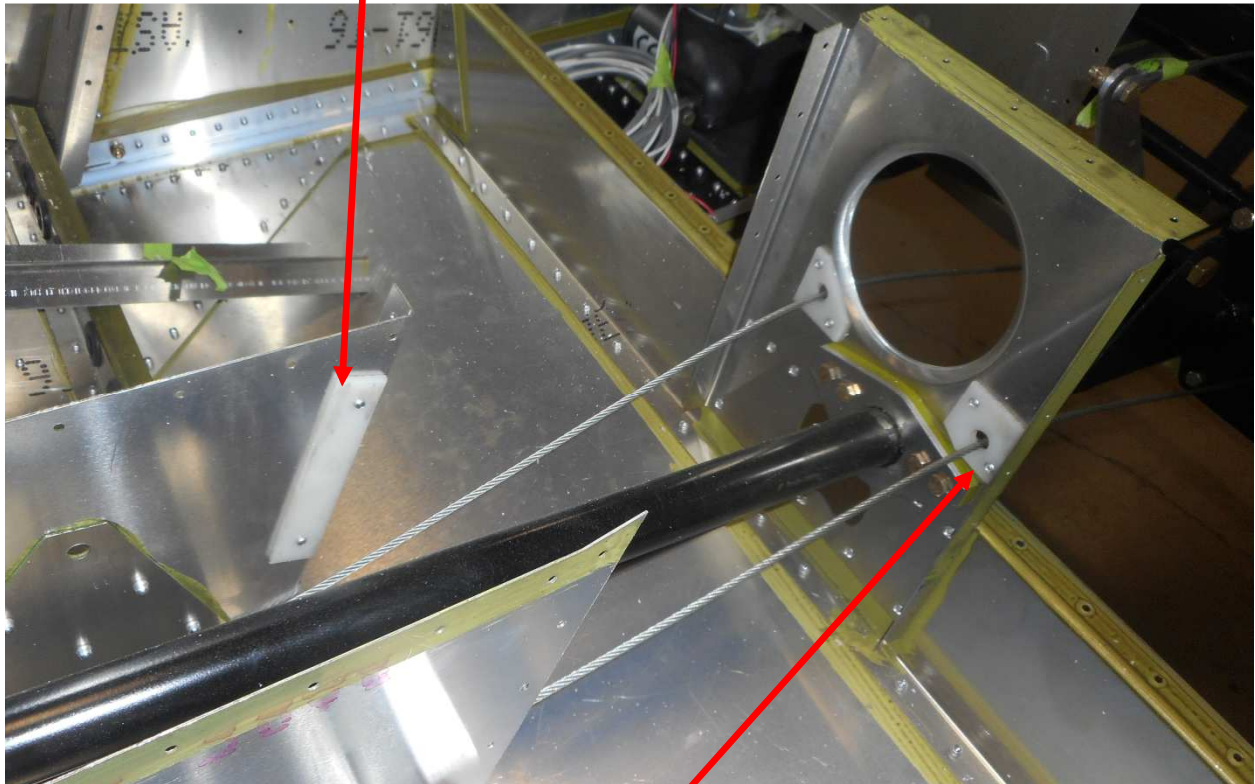
Front torque tube bearing rudder fairlead 75C4-4

(ref DWG 75-CA-3)



Right arm rest fairlead 75C4-2

Rudder cables run above the torque tube ( underneath the arm rest between the two seats)

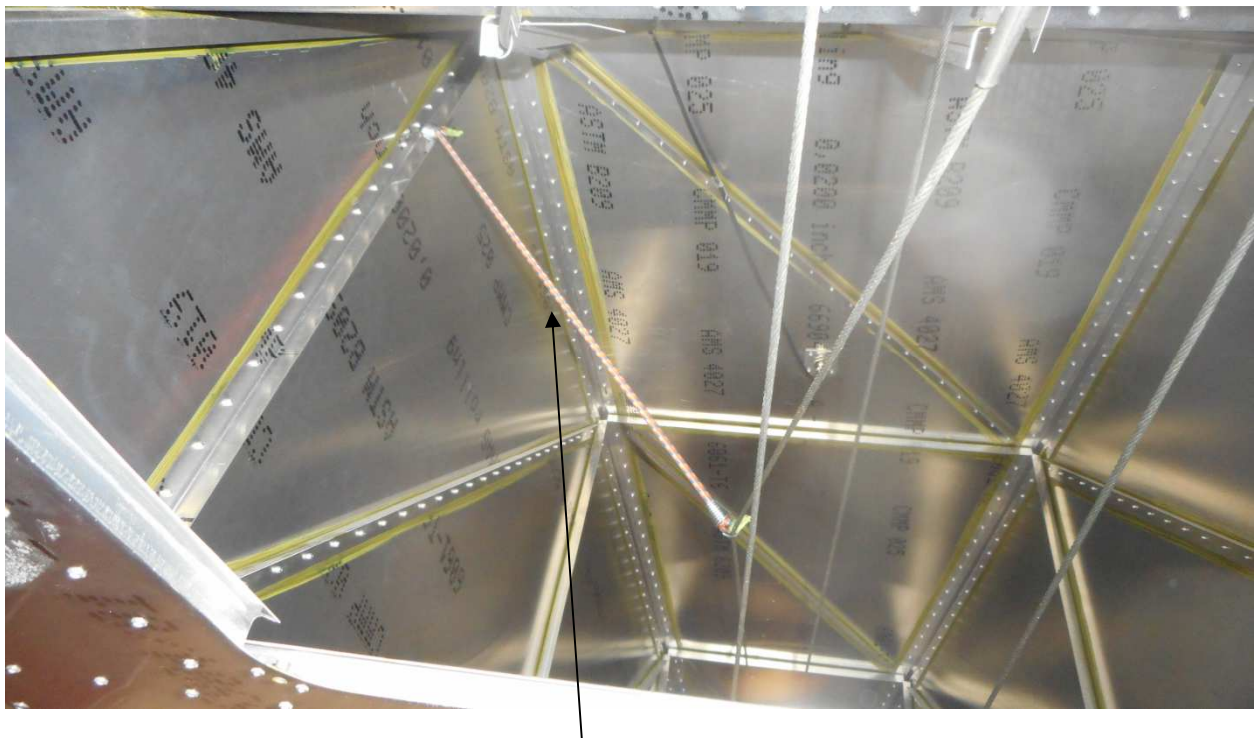


Torque tube bearing support rudder fairlead 75C4-3

(photo with arm rest top 75F11-5 removed : note cables completely loose)



The rudder cables run in the space between the control mixer 75C1-6 and the horizontal flaperon control rods 75C2-1



Rear fuselage: elevator and rudder cables. (elevator cables has a bungee to keep the elevator cables separated)



Rudder outlet fairing 75C4-1    rudder cable outlet fairing 75Z1-5 (ref 75-ZA-3)



Rudder stops 75Z1-6 (ref 75-ZA-3)

