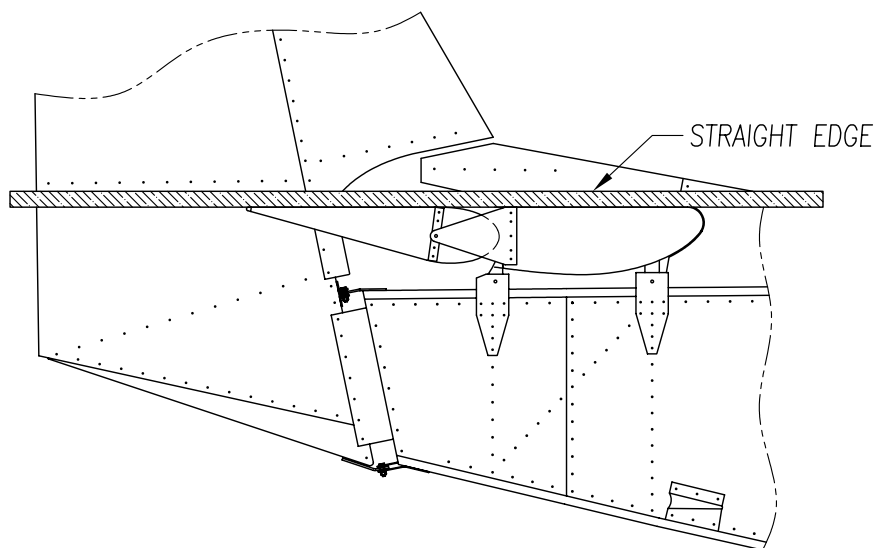
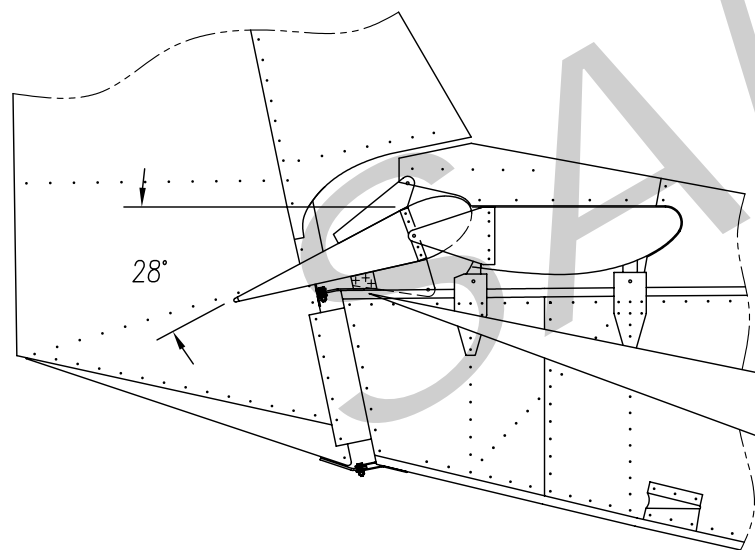


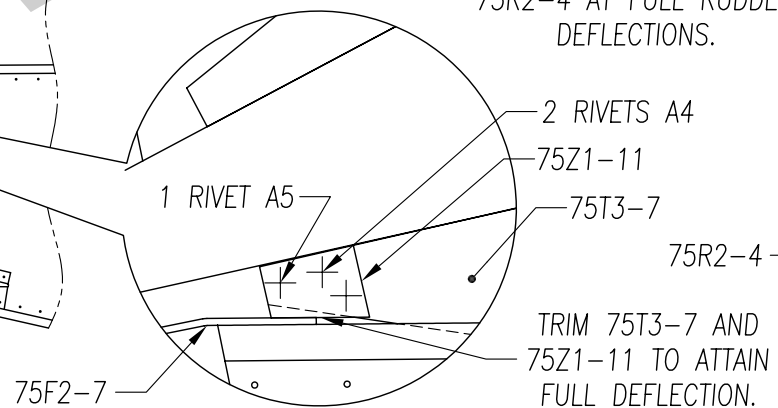
ELEVATOR UP DEFLECTION:  $28^\circ \pm 2$



ELEVATOR NEUTRAL POSITION

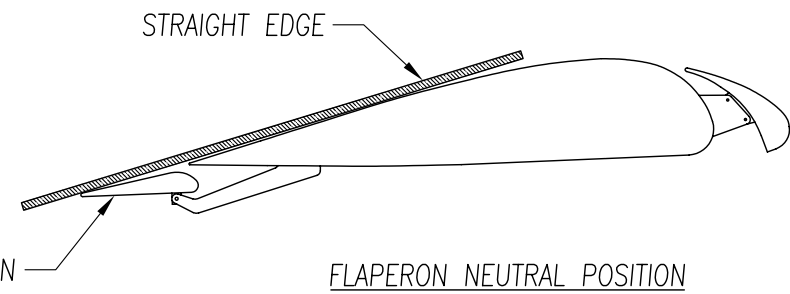
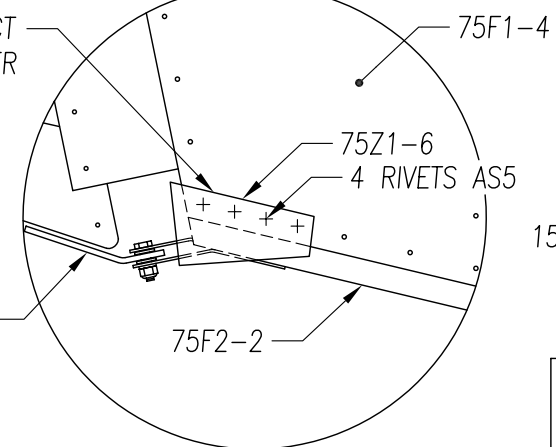


ELEVATOR DOWN DEFLECTION:  $28^\circ \pm 2$

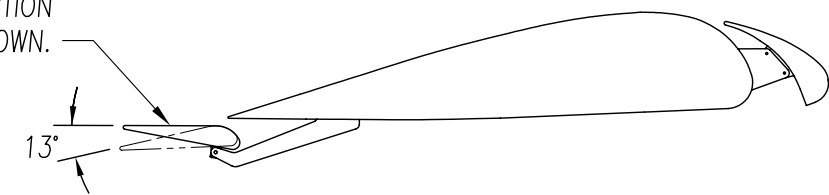


RUDDER DEFLECTION:  $23^\circ \pm 1$

SET 75Z1-6 TO CONTACT 75R2-4 AT FULL RUDDER DEFLECTIONS.

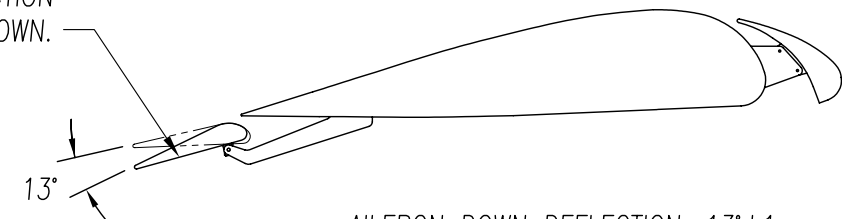


CHECK AILERON DEFLECTION WITH FLAPS UP AND DOWN.

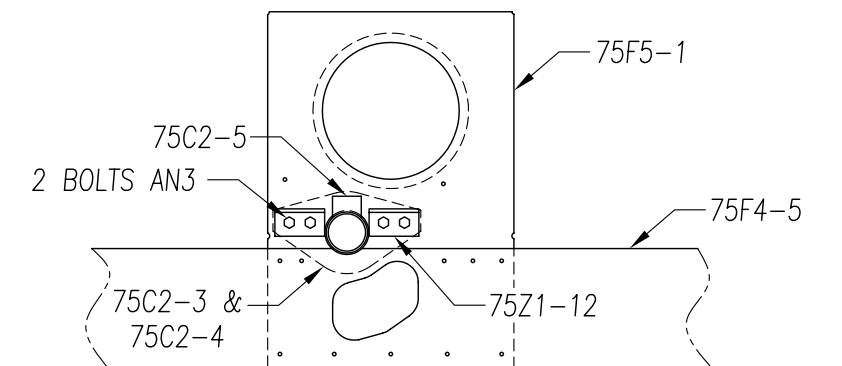


AILERON UP DEFLECTION:  $13^\circ \pm 1$

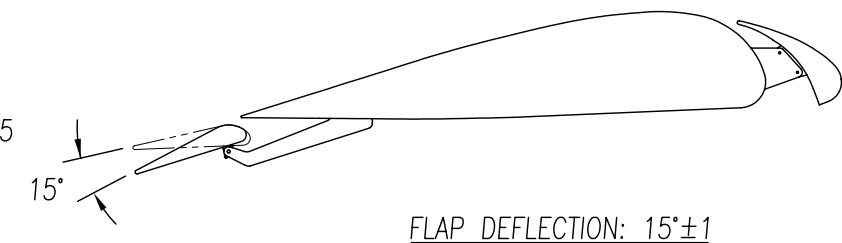
CHECK AILERON DEFLECTION WITH FLAPS UP AND DOWN.



AILERON DOWN DEFLECTION:  $13^\circ \pm 1$



AILERON CONTROL STOPS



FLAP DEFLECTION:  $15^\circ \pm 1$

STOL CH 750	CONTROL DEFLECTIONS AND STOPS		75-ZA-7
	copyright © 2008 CHRIS HEINTZ	zenithair.com	