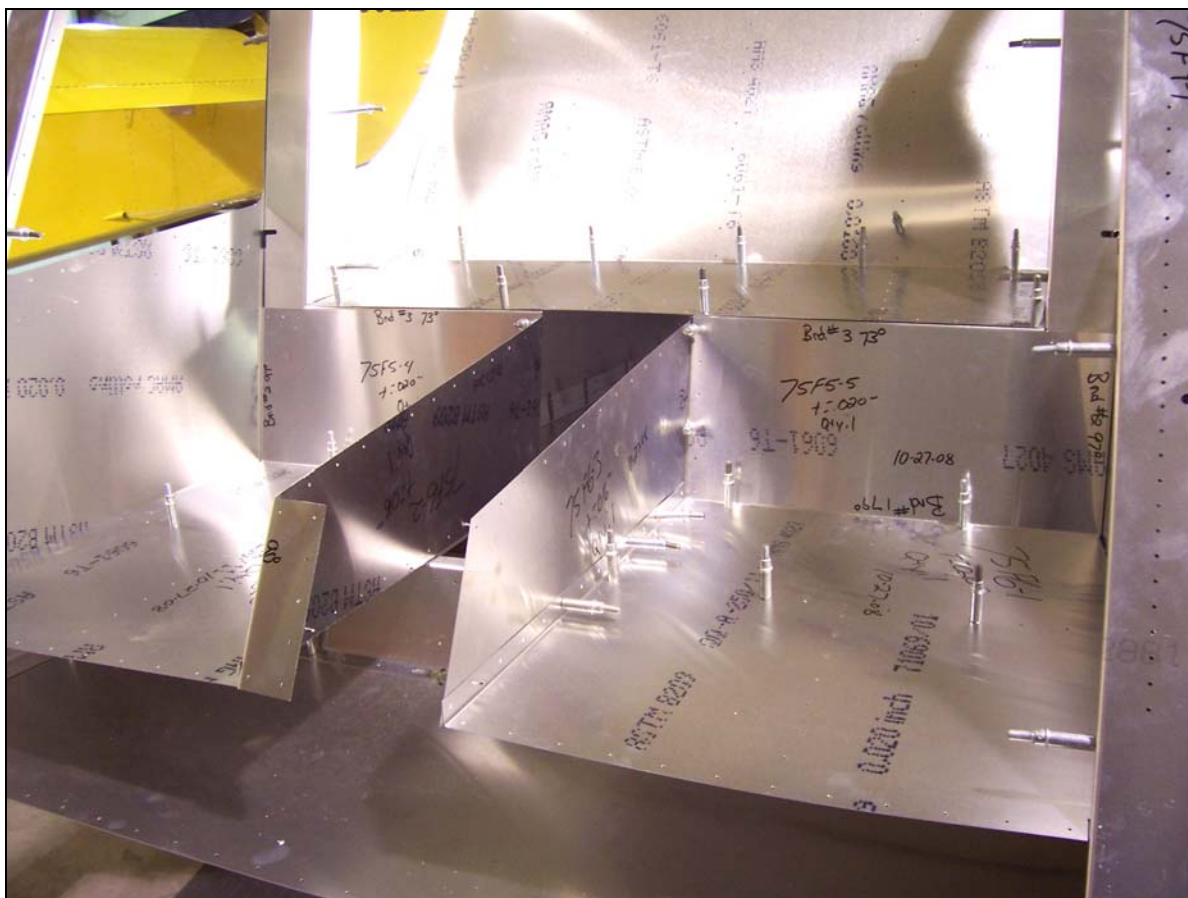


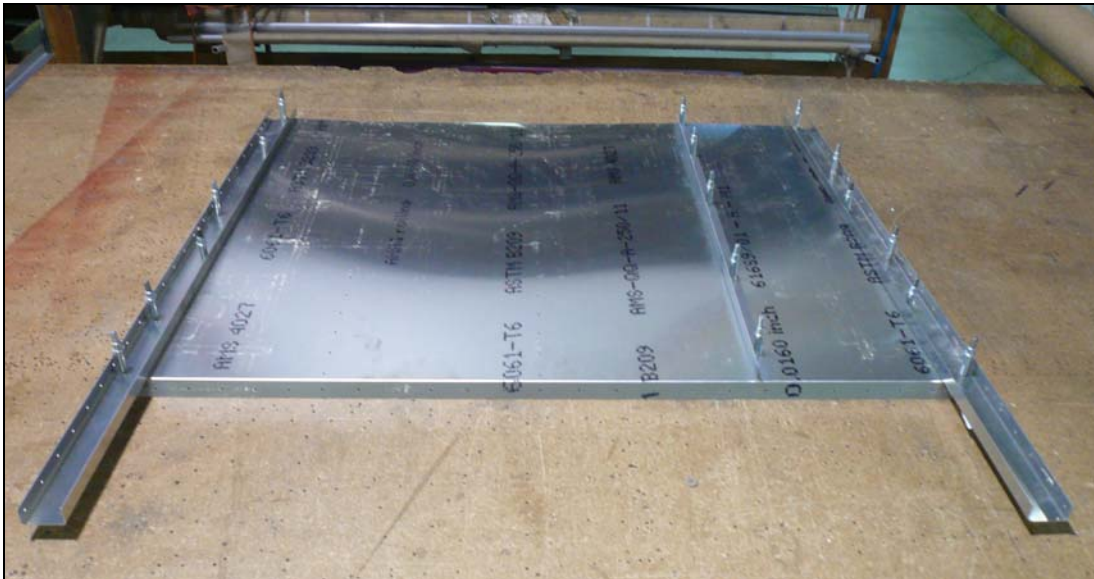
Section 75-FA-3 Baggage Compartment



This manual has been prepared for assembly of the baggage compartment supplied with match drilled parts. This photo assembly manual is intended as a supplement to the drawings. If there is any discrepancy between this manual and the drawings, the drawings supersede this manual. For more information on building standards and allowable tolerances see "Construction Standards for Zenair Light Aircraft" available from Zenith Aircraft Co.

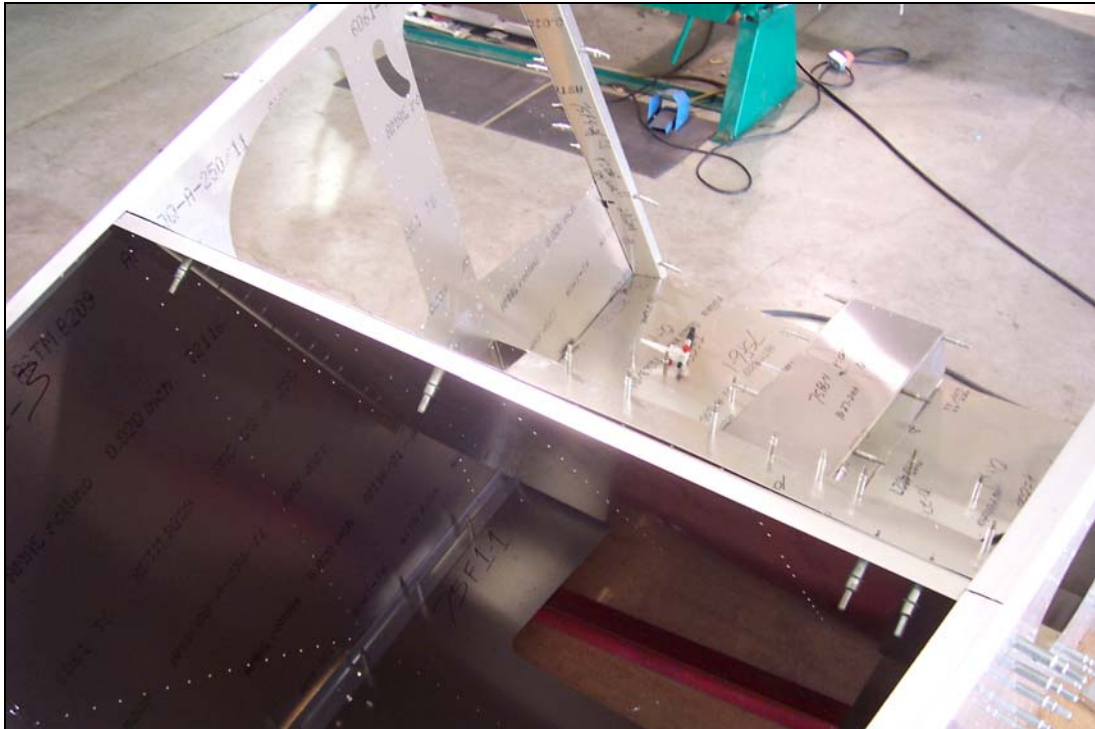


P/N: 75F5-2
Baggage Back



P/N: 75F6-7
Baggage Back
Channel

Cleco the Baggage Back Channels to the Baggage Back. Cut three L angles 675mm long. Draw a center line on one flange of each L angle. Mark the first hole 10mm from the end of the L angle and predrill a hole on the mark with a #40 drill bit. Cleco the predrilled hole to the first hole on the Baggage Back. Rotate the L angle until the center line is visible through the predrilled holes in the Baggage Back and clamp the L angles in place. With a #40 drill bit, back drill through the holes in the Baggage Back into the L angles and Cleco. With a #30 drill bit, expand the holes in the L Angles and the Baggage Back Channels and Cleco.



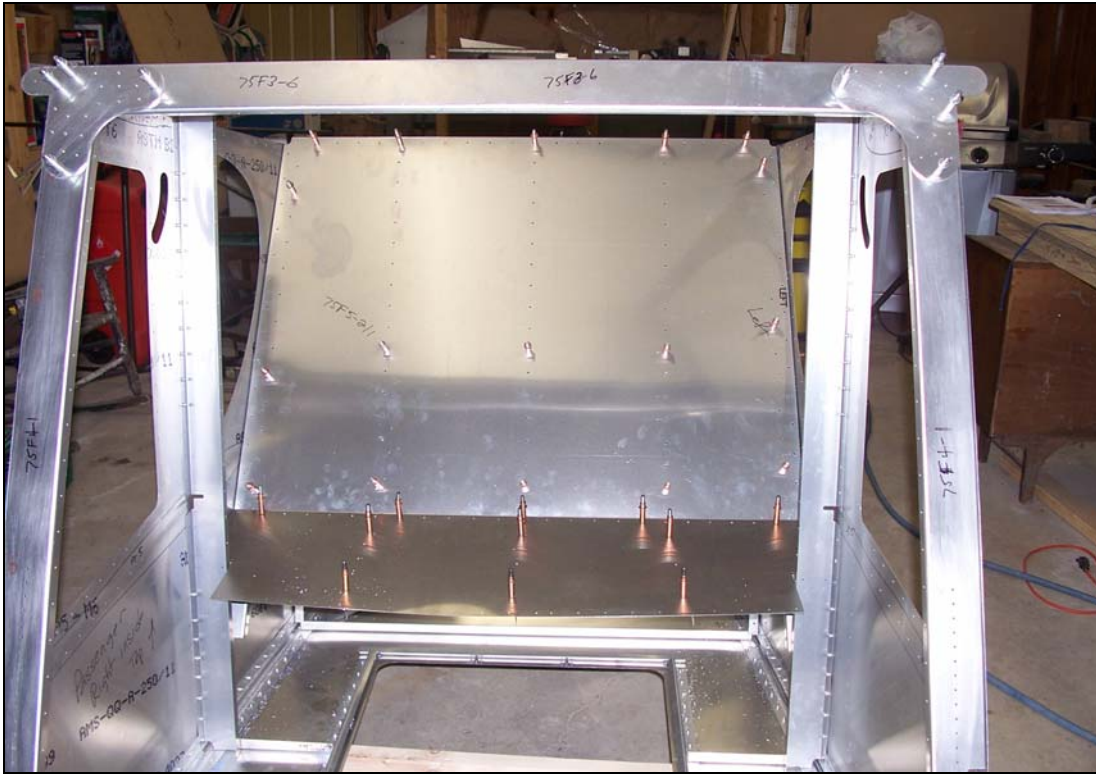
P/N: 75F6-5
Baggage Angle

Remove the Clecos holding the Top Skin to the Longerons so that it can be pulled back to help install the Baggage Back. Cleco the Baggage Back Channels to the Side Skins. Clamp the Baggage Angle to the Longerons and to the Baggage Back. With a #40 drill bit, back drill through the Baggage Back into the Baggage Angle and Cleco. With a #30 drill bit, expand the holes through the Baggage Back and Baggage Angle and the Side Skin into the Baggage Back Channels. Cleco as the holes are expanded. Replace the Top Skin and back drill with a #40 drill bit through the Top Skin into the Baggage Angle and Cleco. With a #30 drill bit, expand the holes.



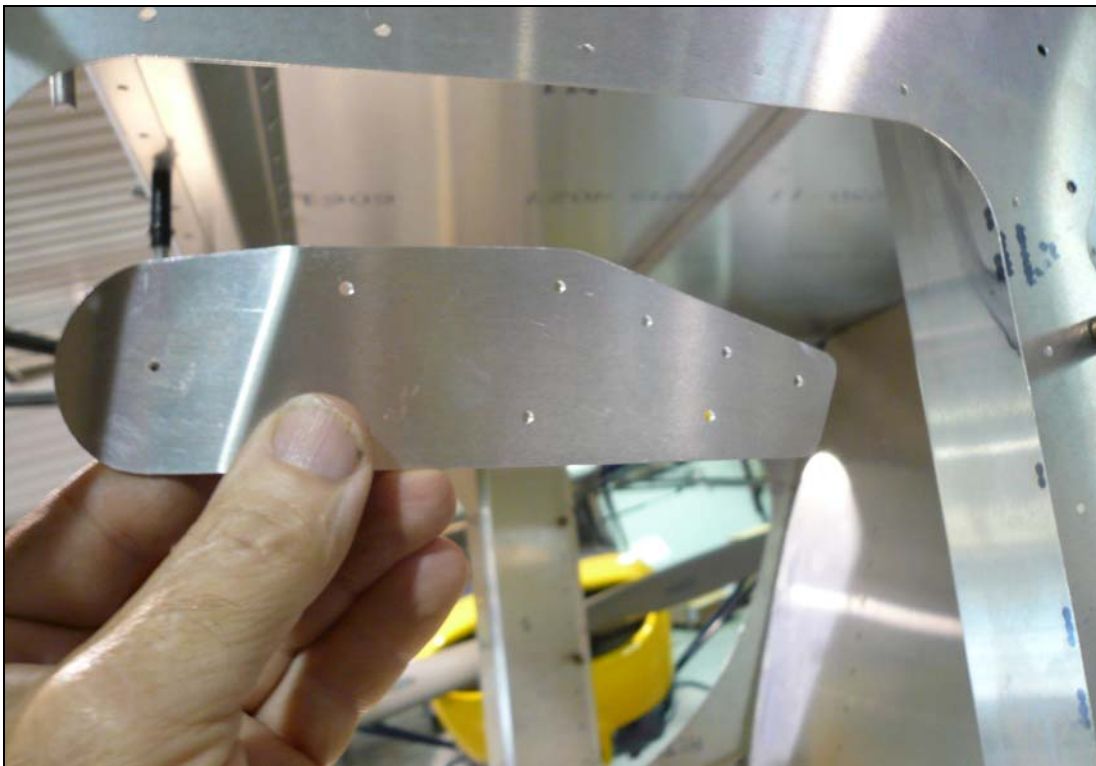
P/N: 75F5-3
Baggage Floor

Cut three L angles 260mm long. Draw a center line on one flange and mark the first rivet location at 10mm from the end. With a #40 drill bit, predrill the first hole on the mark. Cleco the L angles to the Baggage Floor and rotate the L angles so the center line is visible through the predrilled holes in the Baggage Floor and clamp them in place. With a #40 drill bit, back drill through the holes in the Baggage Floor into the L angles and Cleco. With a #30 drill bit, expand the holes and Cleco.



Cleco the Baggage Floor to the Side Skins and the Baggage Back. With a #30 drill bit, expand the holes through the Baggage Floor into the Baggage Back and the Side Skins and Cleco.

Note: The Uprights have been removed to make installation easier. Once the Baggage Floor has been installed replace the Uprights.



P/N: 75F3-8
Shoulder Harness
Attachment

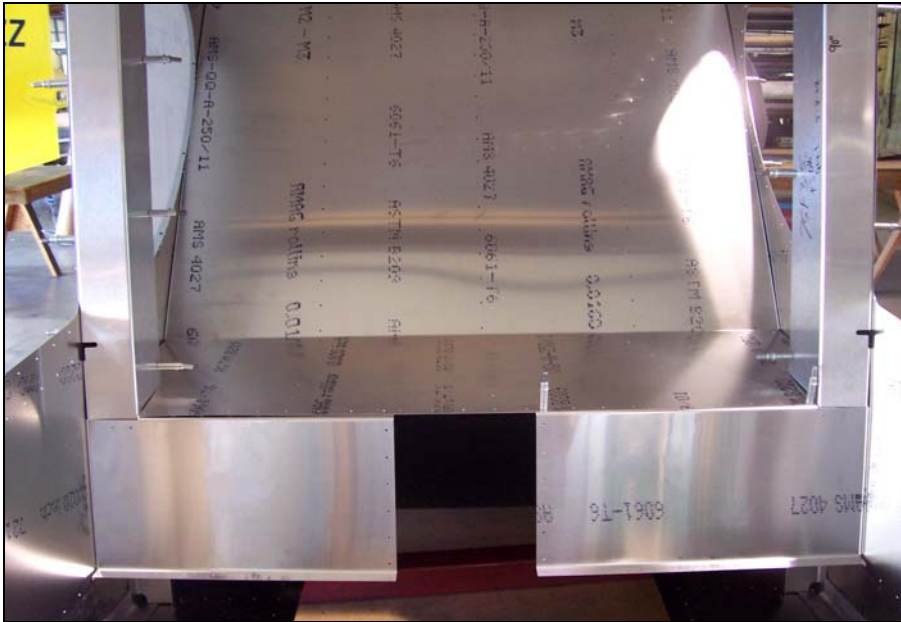


Cleco the Shoulder Harness to the Longeron and Side Skin. With a #30 drill bit, then a #20 drill bit, expand the holes and Cleco.



P/N: 75F3-5
Flaperon Control
Cover

Cleco the Flaperon Control Covers to the Uprights and Side Skins. With a #30 drill bit, expand the holes and Cleco.



P/N: 75F5-4
Right Baggage Upright

P/N: 75F5-5
Left Baggage Upright

Cleco the Right and Left Baggage Uprights to the Baggage Floor and the Side Skins. With a #40 drill bit, back drill through the two holes on the Baggage Uprights into the Flaperon Control Cover and Cleco. With a #30 drill bit, expand the holes through the Baggage Uprights into the Baggage Floor, Side Skins, and Flaperon Covers.



Note: Baggage Floor was removed for better clarity.

The 55mm L angle is shown on the left and the 100mm L angle is centered in the photo above.

Cut an L angle 55mm long. Position the L angle on the Upright under the Baggage Floor. With a #40 drill bit, back drill through the Upright into the L angle and Cleco. Cut an L angle 100mm long. Position the L angle on the Flaperon Control Cover under the Baggage Floor. With a #40 drill bit, back drill through the Flaperon Control Cover into the L angle. Back drill through the Baggage Floor into both L angles and Cleco. With a #30 drill bit, expand the holes and Cleco.



P/N: 75F4-5
Torque Tube Bearing
Channel

P/N: 75F5-1
Torque Tube Bearing
Support

Cleco the Torque Tube Bearing Channel to the Bottom Skin. With a #20 drill bit, expand the holes through the Torque Tube Bearing Channel into the Bottom Skin and Cleco.

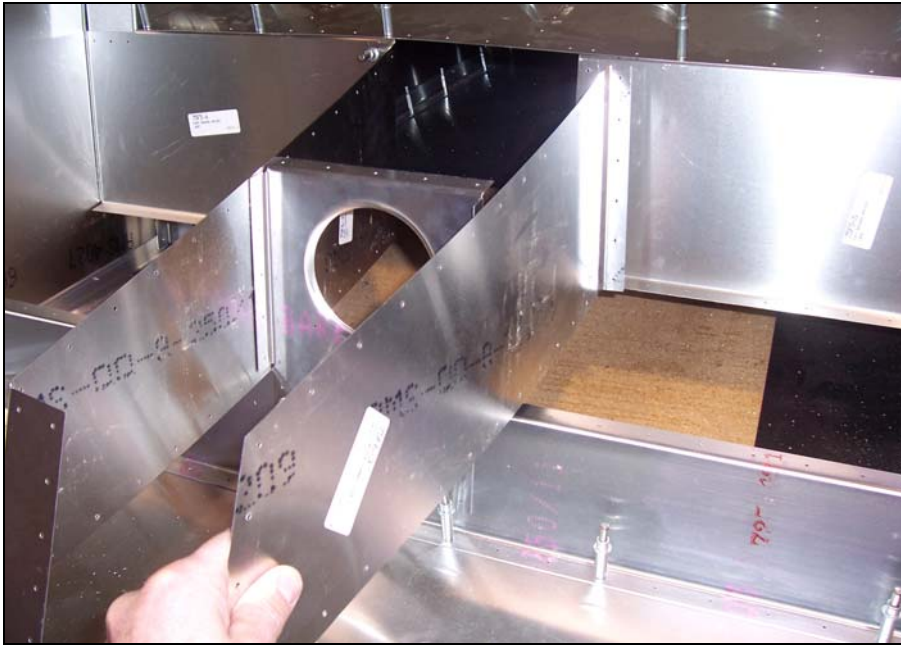
Cleco the Torque Tube Bearing Support to the Torque Tube Bearing Channel. With a #20 drill bit, expand the holes through the Support into the Channel.



P/N: 75F6-2
Right Control Tunnel
Side

Cleco the Right Control Tunnel Side to the Right Baggage Upright. With a #30 drill bit, expand the holes through the Control Tunnel Side into the Baggage Upright and Cleco.

Note: The Control Tunnel Side fits best with the flange behind the Baggage Upright.



P/N: 75F6-3
Left Control Tunnel Side

Cleco the Left Control Tunnel Side to the Left Baggage Upright. With a #30 drill bit, expand the holes through the Control Tunnel Side into the Baggage Upright and Cleco.

Note: The Control Tunnel Side fits best with the flange behind the Baggage Upright.



P/N: 75F6-4
Control Tunnel Top

Cleco the Control Tunnel Top to the Baggage Floor, the Control Tunnel Sides, and the Torque Tube Bearing Support. The rear flange should slide under the Baggage Floor and the side flanges overlap the Control Tunnel Sides. With a #30 drill bit, expand the holes through the Control Tunnel Top into the Baggage Floor, Control Tunnel Sides, and Torque Tube Bearing Support and Cleco.



P/N: 75F5-6
Right Lower Baggage Floor

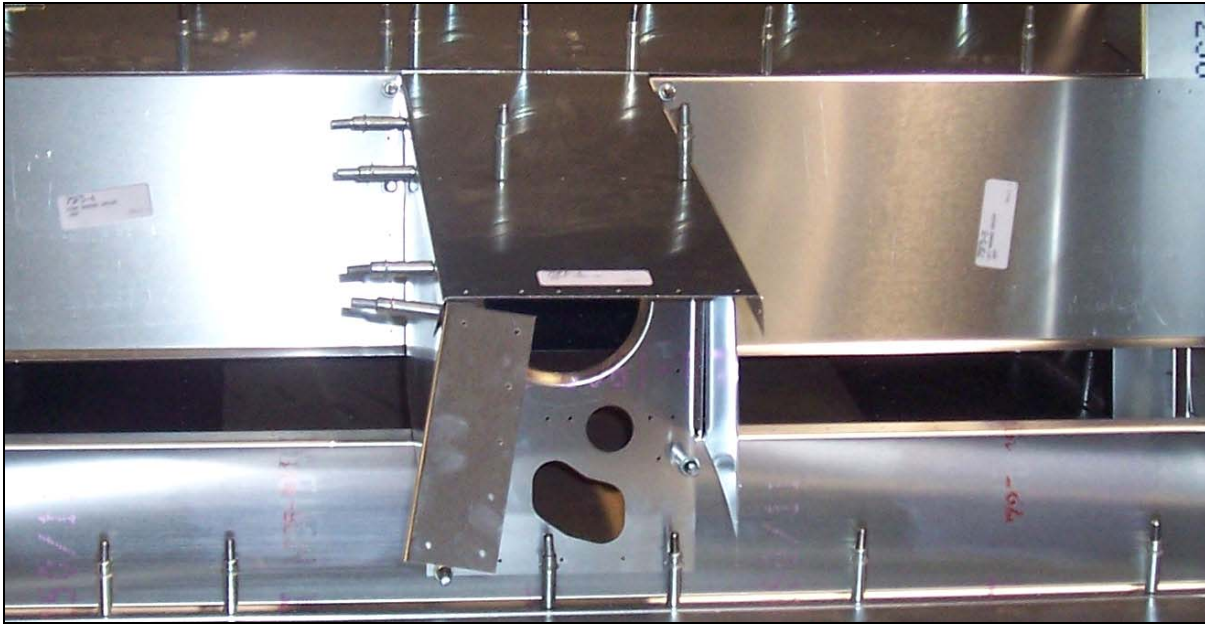
P/N: 75F6-1
Left Lower Baggage Floor

Cut two L angles 270mm long and two L angles 240mm long. Draw a center line on one flange and mark the first rivet location at 10mm from the end. With a #40 drill bit, predrill the first hole on the mark. Cleco the L angles to the Lower Baggage Floor and rotate the L angles so the center line is visible through the predrilled holes in the Lower Baggage Floor and clamp them in place. With a #40 drill bit, back drill through the holes in the Lower Baggage Floor into the L angles and Cleco. With a #30 drill bit, expand the holes and Cleco. The rear L angle will overlap the Torque Tube Bearing Channel.



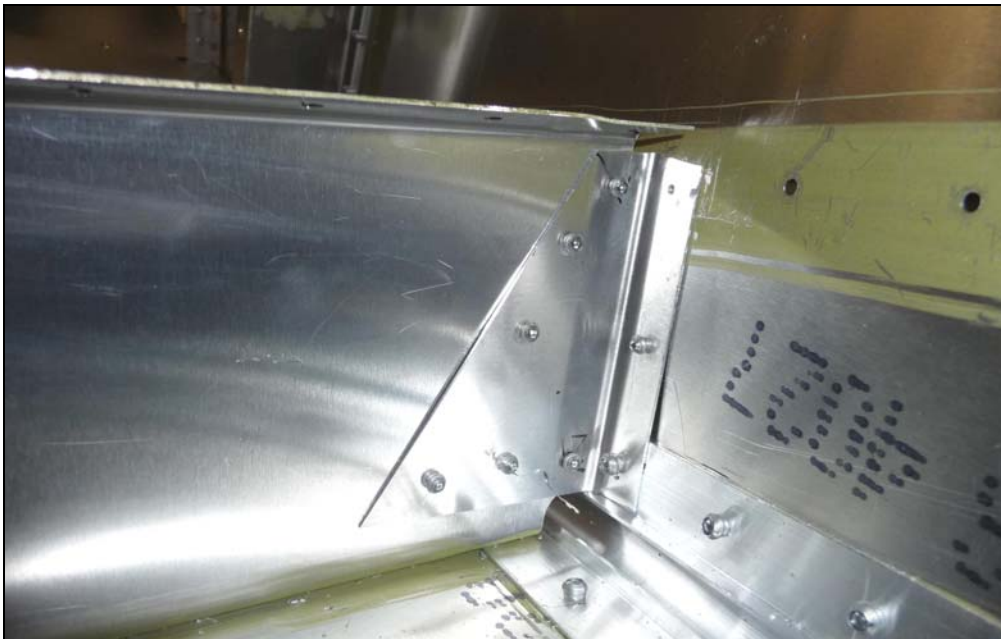
Cleco the Right and Left Lower Baggage Floors in place. The Lower Baggage Floors rest on top of the Flange of the Baggage Uprights. The I/B flanges overlaps the Control Tunnel Sides inside the baggage compartment. With a #30 drill bit, expand the holes in the Lower Baggage Floors and Cleco.

Note: Control Tunnel Top was removed in the photo above.



Once the Lower Baggage Floors are installed, back drill the holes in the side flanges of the Torque Tube Bearing Support into the Control Tunnel Sides with a #40 drill bit and Cleco. With a #30 drill bit, expand the holes and Cleco.

Note: The Lower Baggage Floors aren't shown in the photo above but should be in place to ensure proper alignment of the Torque Tube Bearing Support.



P/N: 75F4-6
Gusset

Cleco the Gusset to the Side Skin. With a #40 drill bit, back drill into the Torque Tube Bearing Channel and Cleco. With a #30 drill bit, expand the holes in the Gusset through the Torque Tube Bearing Channel and Cleco. With a #20 drill bit, Back drill through the Gusset into the Side Skins.

Note: It's best to have the Lower Baggage Floors in place to assure proper alignment.