



AN4 bolt at inboard end of bottom spar cap angle 6W3-7

5/16" Holes pre-drill to fit center wing, Ref 6-W-4

Detail of right spar root end (looking at rear side)

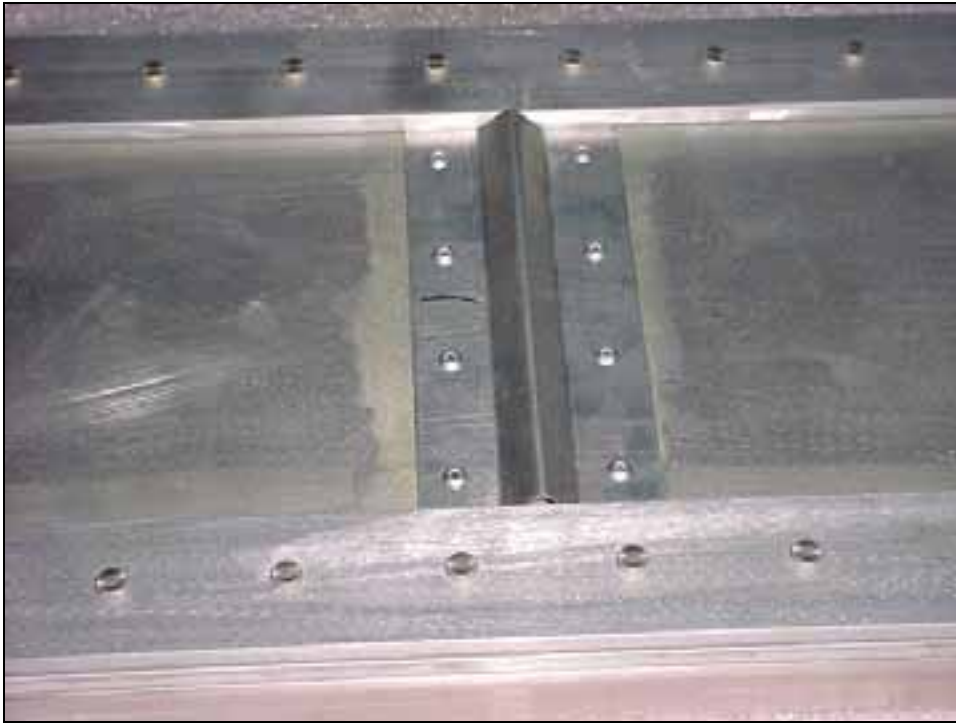
Refer to drawing 6-W-3 to separate the left and right Wing Spar Assembly. The bottom of the spar is longer than the top.



ORIENTATION:  
Top and bottom flanges point towards the rear.

RR = Rear Rib

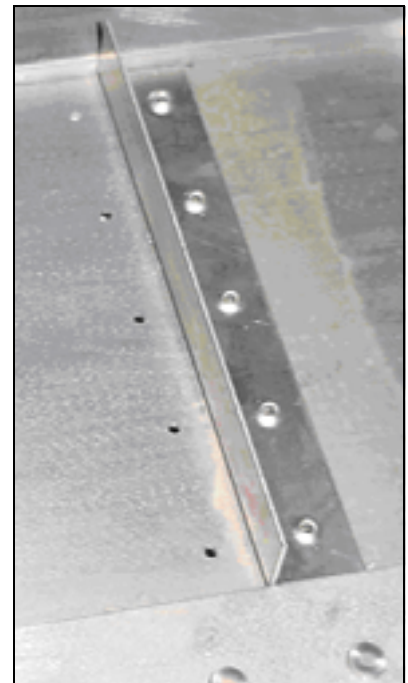
The spar assembly is supplied pre-assembled with pilot holes at the rib stations (through the web).



Hat stiffeners 6W3-8 supplied installed on spar (installed on front side of spar)



Long rib angles for NR #4 to NR #6 (installed on front side)  
See drawing 6-K-0 for location of NR #4 for standard 12 gallon tank



Short nose rib angles 6W3-9 supplied installed on spar. (for NR #1 to NR#4)