

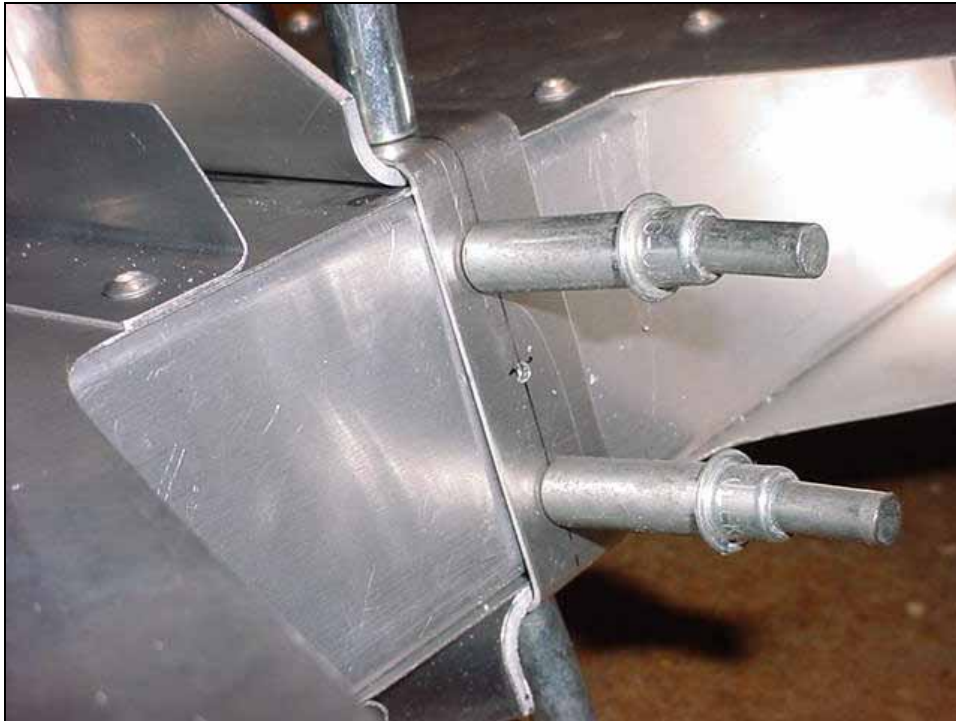


The side flange of the Angle 6T3-7 must be riveted to the Elevator Horn Doubler 6T3-6.



2 RIVETS A5
6T3-7 to 6T3-6

In this photo, the Channel 6T3-2 was removed to get in with an angle drill to drill.



**BENT STRIP
6T3-8**

CHECK: End of horn should not interfere with the bend radius of the strip.

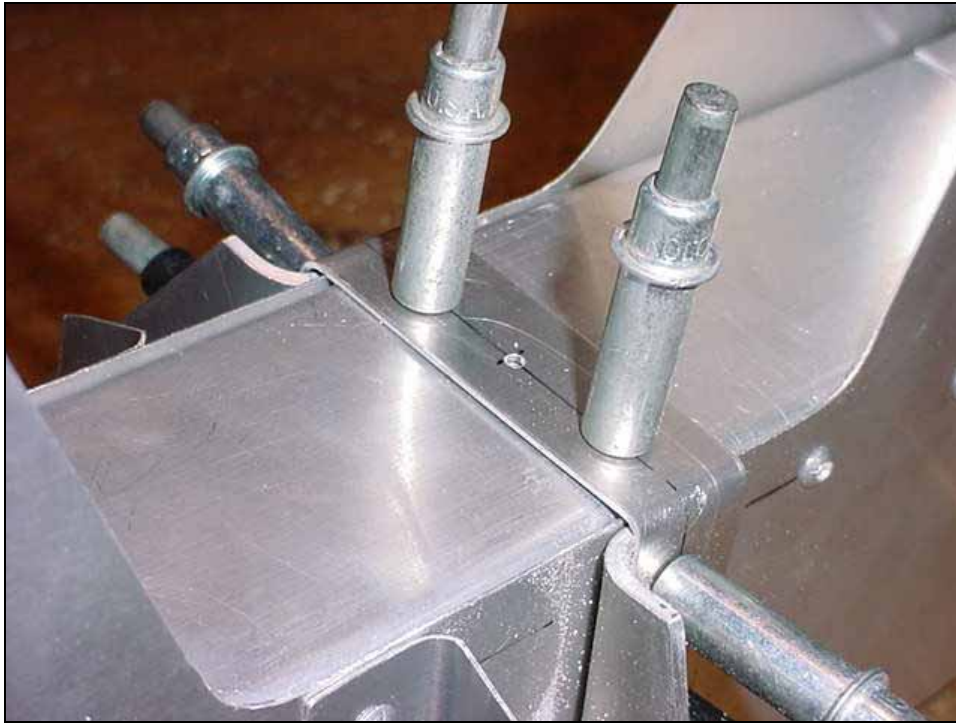
3 rivets A5 in elevator center channel



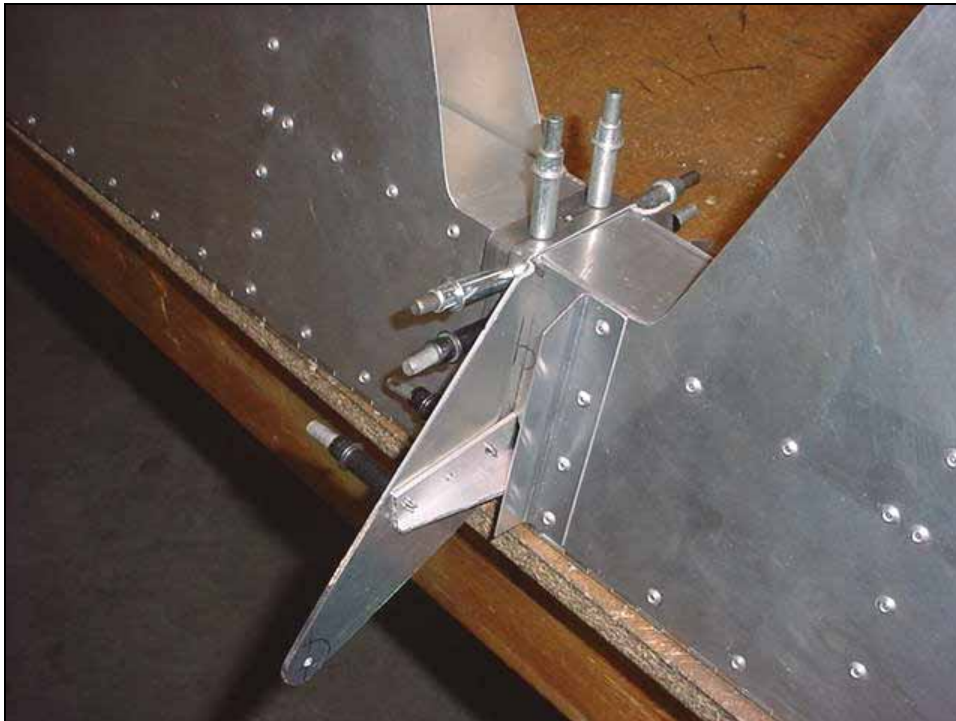
1 rivet AS5 through:
top flange 6T3-2, skin 6T3-3,
upper horns 6T3-4, strip 6T3-8.

1 rivet AS5 through:
bottom flange 6T3-2, skin
6T3-3, lower horns 6T3-5, strip
6T3-8.

1 stainless steel rivet through top and bottom flange of elevator center channel 6T3-2.

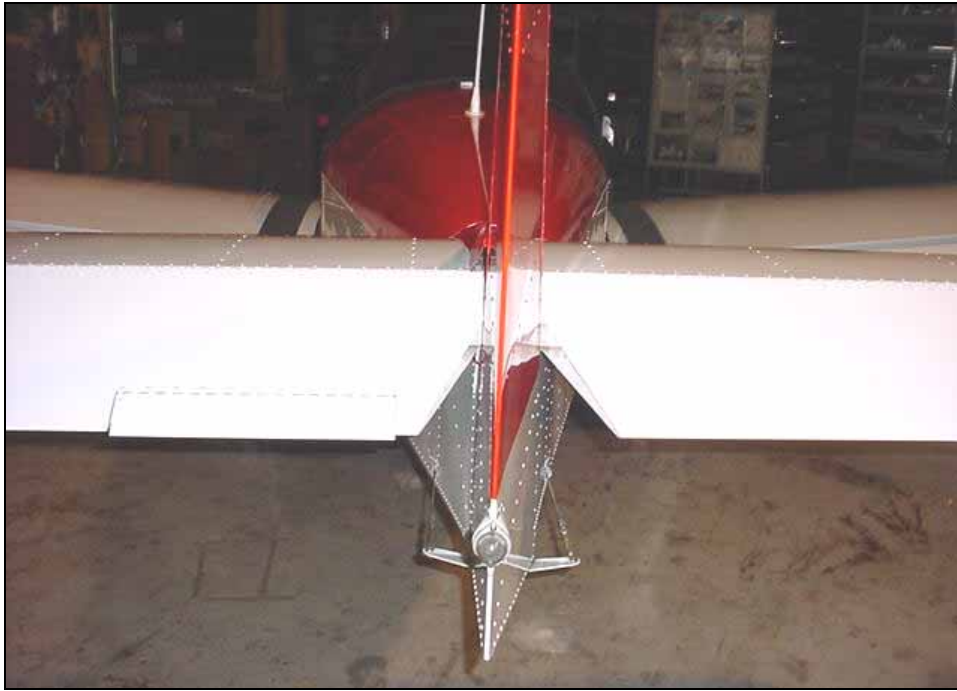


Detail of Bent Strip 6T3-8



Ref. Bottom middle diagram
on drawing 6-T-3
A5 rivets in the area around
middle ribs shown as bold +

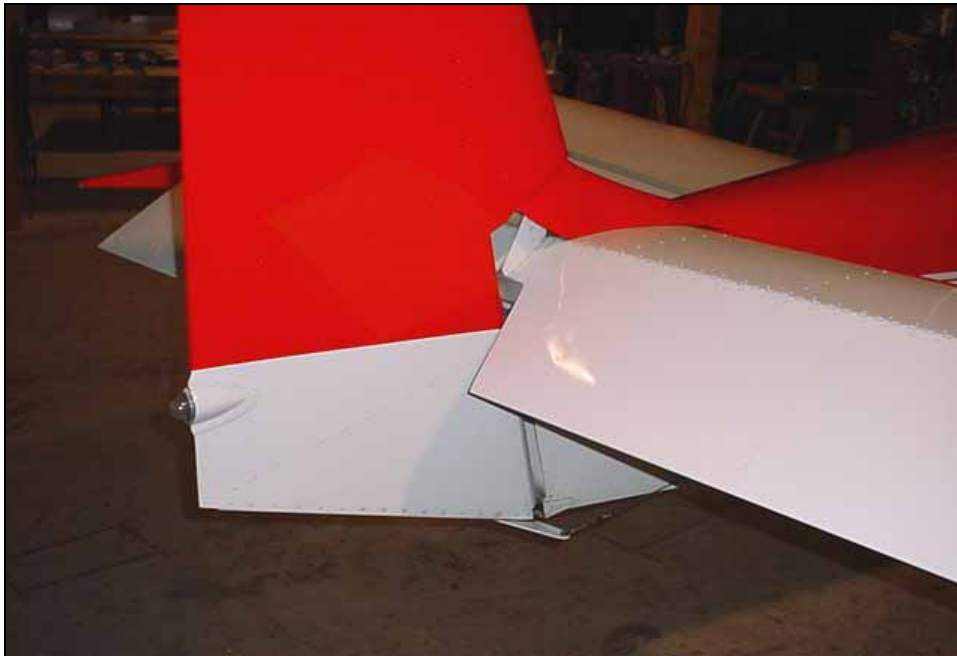
Bent strip overlaps top and bottom horns 6T3-4 and 6T3-5.



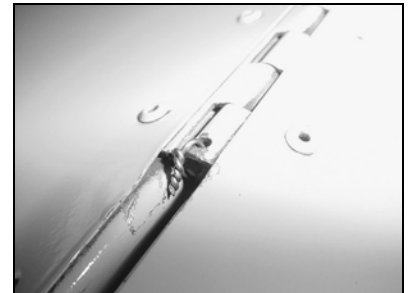
Rear view: elevator cutout to make room for the rudder deflections.



Gap between end of rib and trailing edge is generally left open.



Gap between the skins around the rudder cutout is generally left open: with the rudder in place the gap is practically not visible!



Safety wire to secure pin.
Ref: Middle diagram on drawing 6-T-2.