

6-ZU-1-2 AIRFRAME BOLTS

REMOVE NOSE RIB #1, #2, #3, #4.
 DRILL OUT BOTTOM SOLID RIVETS TO ADD
 6-ZU-1-2 ON FRONT SIDE OF SPAR.

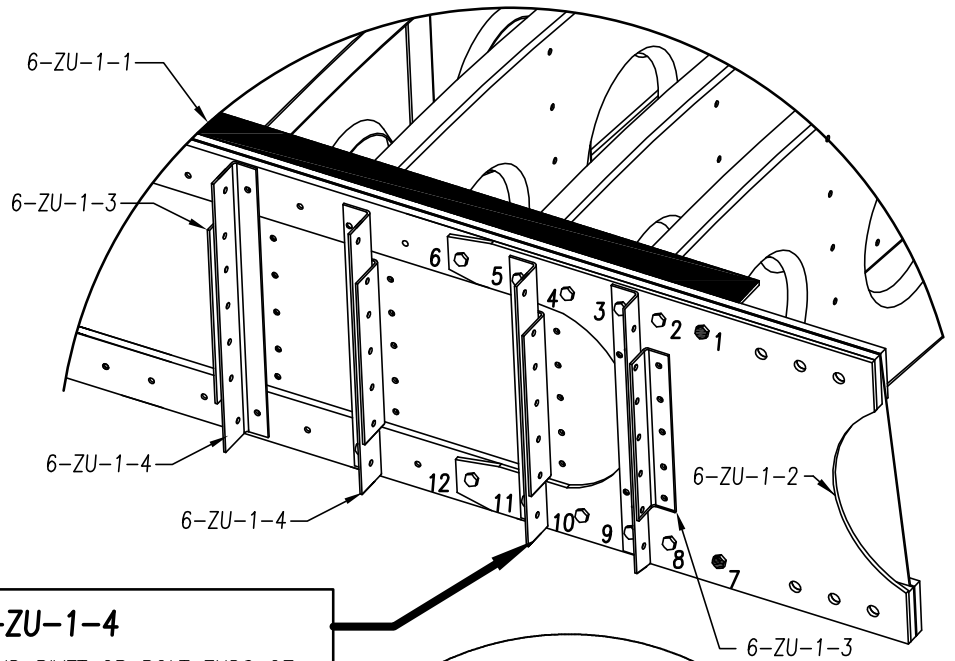
TOP (REFERENCE NUMBER)

- 1 AN4-12A
- 2 AN3-11A
- 3 AN3-12A ANGLE NR #1 (2 WASHERS)
- 4 AN3-11A
- 5 AN3-12A ANGLE NR #2 (2 WASHERS)
- 6 AN3-11A

BOTTOM

- 7 AN4-11A
- 8 AN3-11A (2 WASHERS)
- 9 AN3-11A ANGLE NR#1
- 10 AN3-11A (2 WASHERS)
- 11 AN3-11A ANGLE NR#2
- 12 AN3-11A (2 WASHERS)

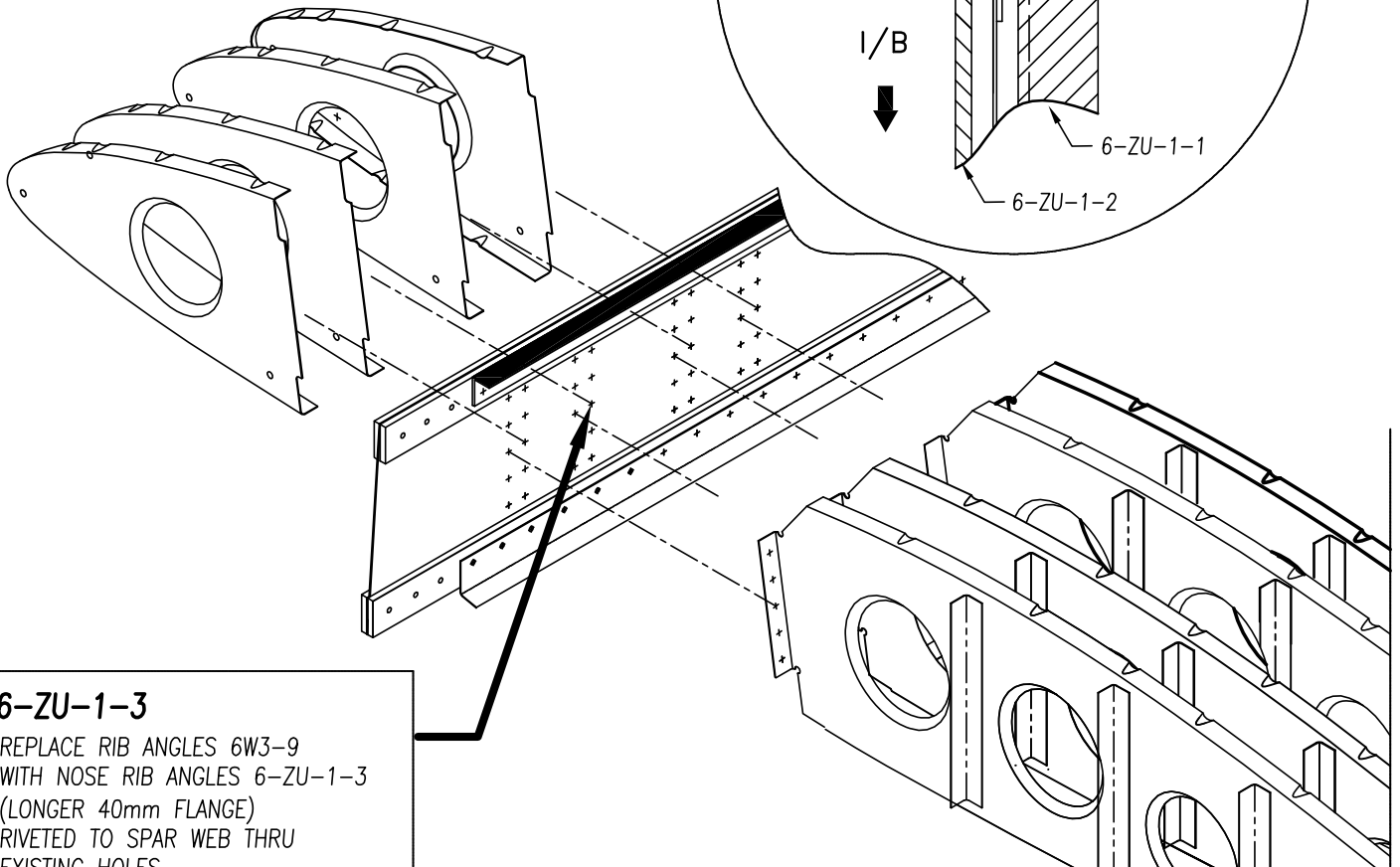
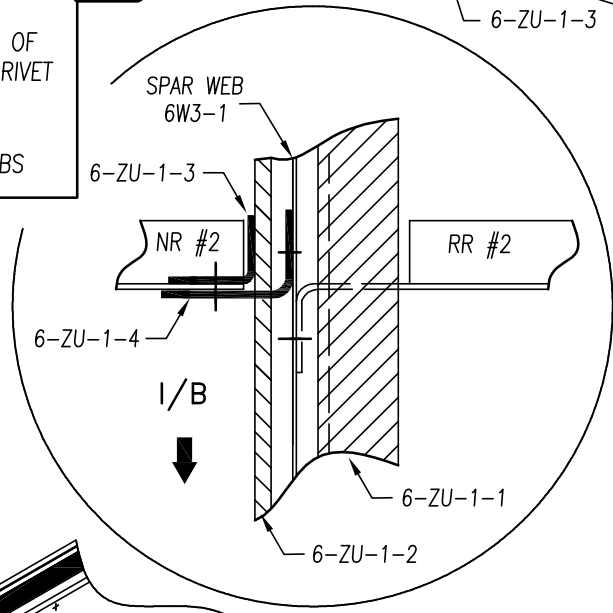
AN3-6A END OF 6-ZU-1-1



6-ZU-1-4

SOLID RIVET OR BOLT ENDS OF
 RIB ANGLE INTO SPAR CAP RIVET
 LINE (ONE AT EACH END)

7 RIVETS A5 THRU NOSE RIBS



6-ZU-1-3

REPLACE RIB ANGLES 6W3-9
 WITH NOSE RIB ANGLES 6-ZU-1-3
 (LONGER 40mm FLANGE)
 RIVETED TO SPAR WEB THRU
 EXISTING HOLES

5 RIVETS A5

ZODIAC
 CH 601 XL / 650

Supplemental drawing for earlier 601XL models
 with 4 nose ribs inboard of the fuel tank

6-ZU-1B