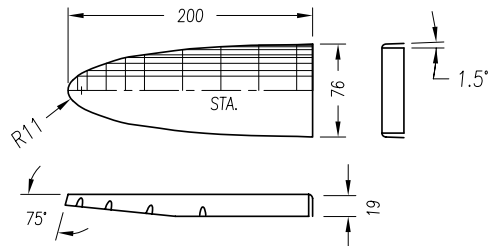
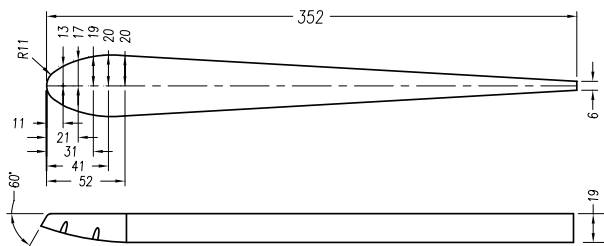


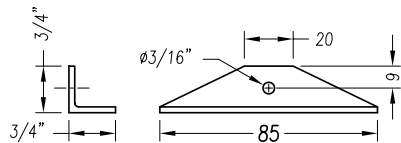
STA.	7.8	15.6	31.2	46.9	62.5	93.7	125	156	187	200
±Y	11.8	16.3	22.2	26.9	29.2	33.4	35.8	37.1	37.5	38



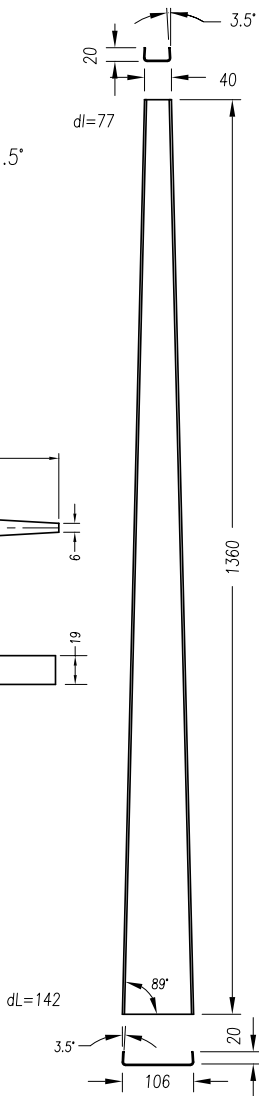
① NOSE RIB
t=.025" (1 REQ'D)



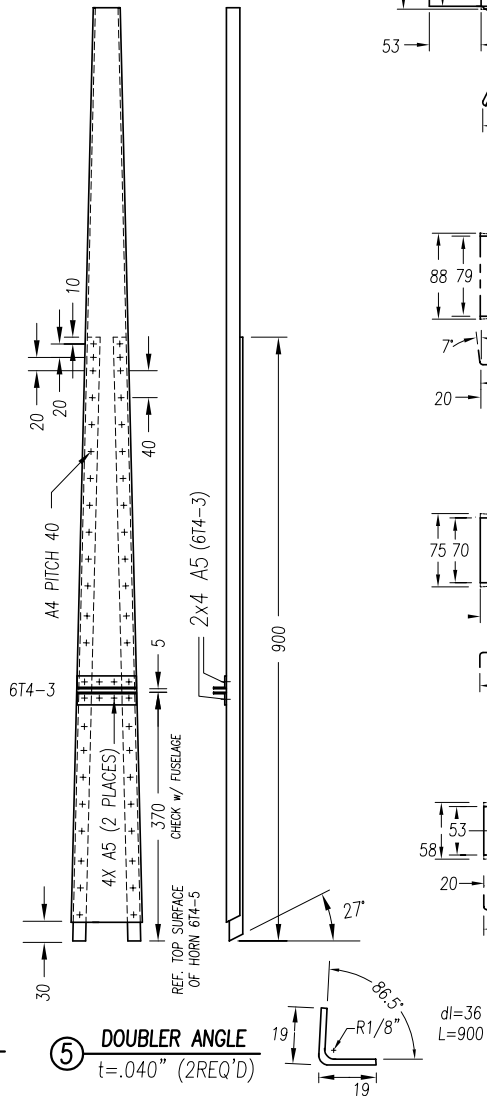
② TIP RIB
t=.025" (1 REQ'D)



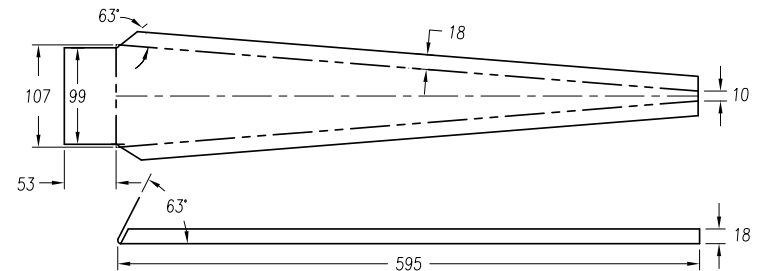
③ UPPER BEARING (2 REQ'D)
EXTR. 3/4"x3/4"x.093"



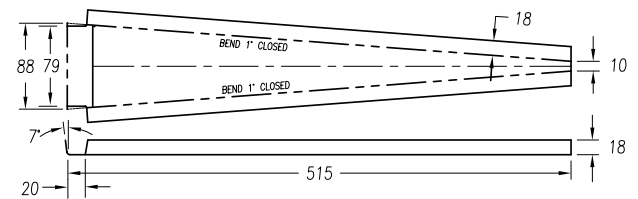
④ VERTICAL TAIL SPAR
t = .025" (1 REQ'D)



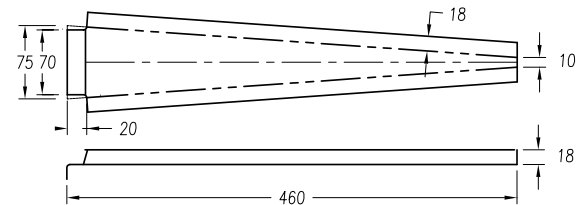
⑤ DOUBLER ANGLE
t=.040" (2REQ'D)



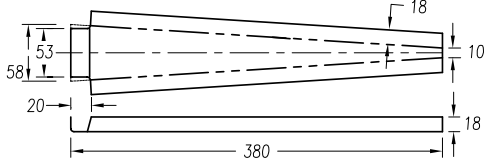
⑥ REAR RIB #1
t=.025" (1 REQ'D)



⑦ REAR RIB #2
t=.016" (1 REQ'D)



⑧ REAR RIB #3
t=.016" (1 REQ'D)



⑨ REAR RIB #4
t=.016" (1 REQ'D)

ZODIAC CH 601 XL	VERTICAL TAIL RIBS VERTICAL TAIL SPAR UPPER BEARING	6-T-4
	copyright © 2000 Zenith Aircraft Co. zenithair.com	

ISSUE: 1st 01/01