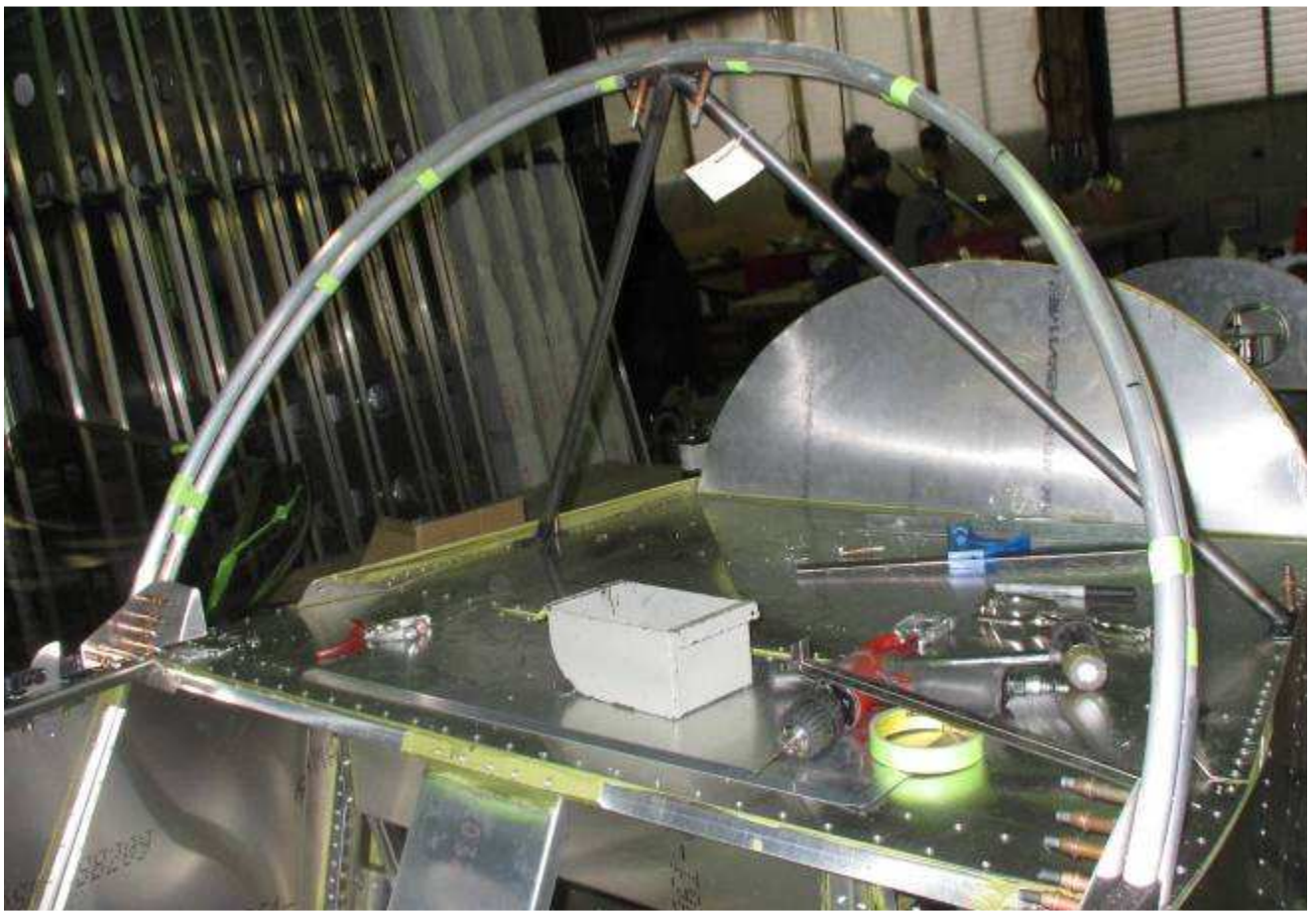




3/16" spacer blocks



FRONT CANOPY FRAME 6C3-2:
Cut the ends off and trial-fit on the canopy side frame.



Refer to the curvature of the bubble to set the height of the tube. The exact height will be set when the tube taped to the roll bar is drilled.

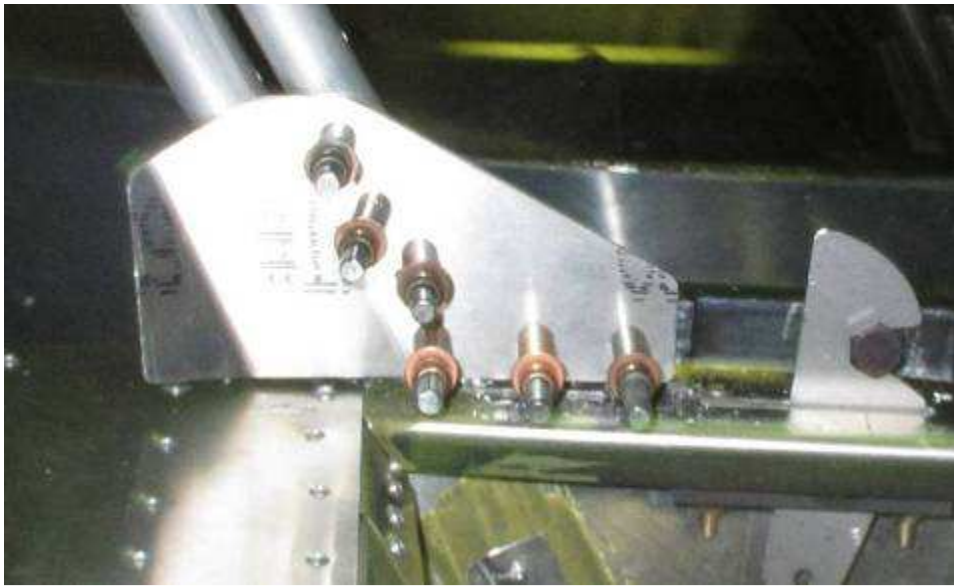


Adjust the width of the tube to the exact width of the fuselage.



Mark the center -line.

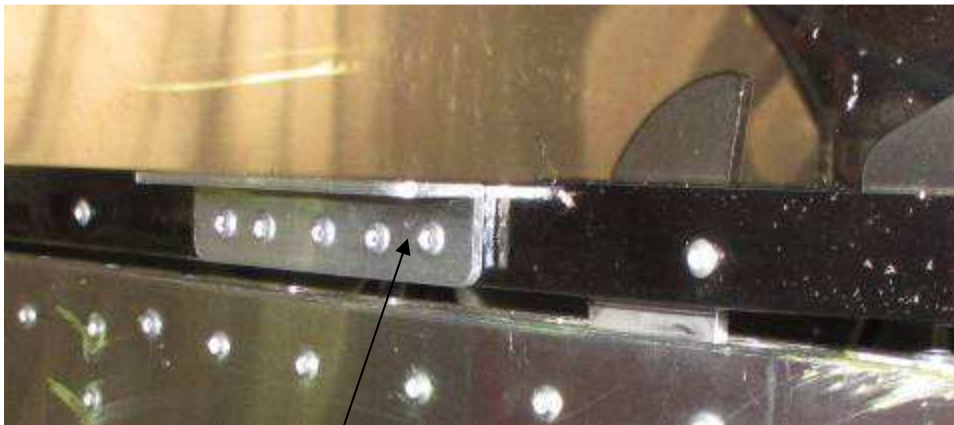
Tape the tubes together with spacer blocks between them.



**FRONT CANOPY
BRACKET 65C3-13**

Drill and Cleco

Position the bracket with the pre-drilled holes in the tube.



Position and drill the
canopy handles.
5 rivets A5

EXTRUSION HANDLE 6C3-8 (position left and right side)



Layout the spacing for the canopy fasteners.
Pre-drill with #30 pilot holes. De-burr the holes.

Also pre-drill the holes in
the canopy side frame.

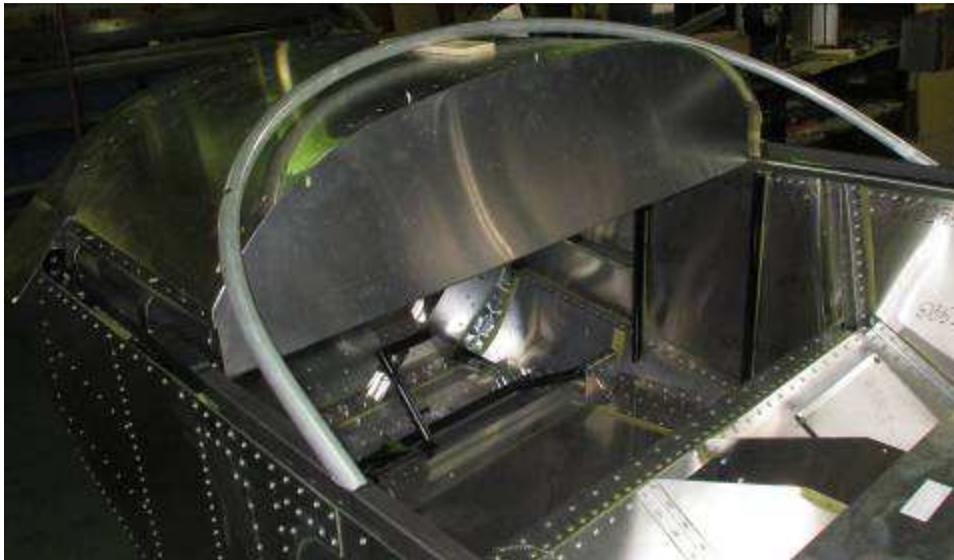


FRONT CANOPY FRAME GUSSET 65C3-12

Use the gusset as an angle guide to cut the ends of the front tube.

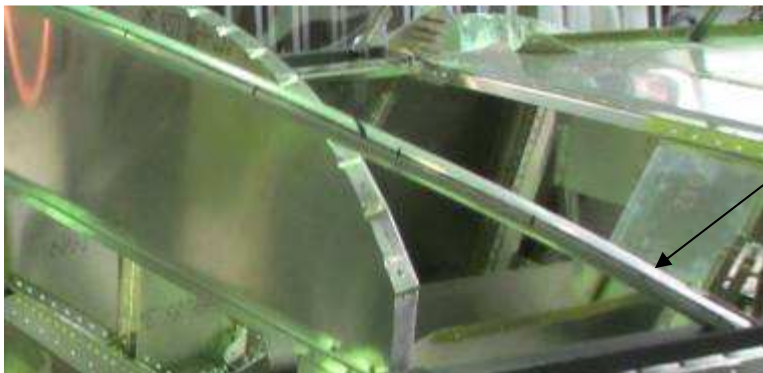


FRONT CANOPY
FRAME 6C3-2



IMPORTANT: Make sure the width of the tube is exactly the same as the width of the fuselage

Test fit tube over the top skin. The objective is to keep the tube low over the dash. Next, remove the top skin to make a support board (see next page) to insure the tube is not installed too low.



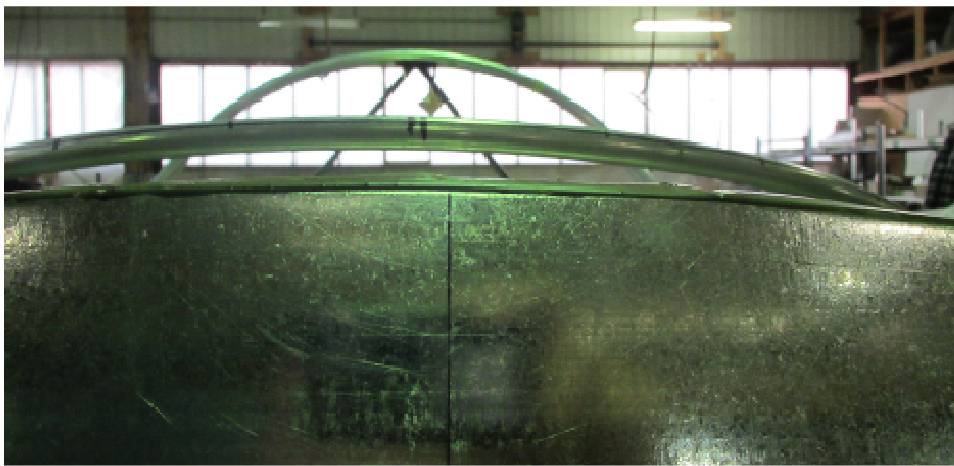
Layout the rivet spacing
an pre-drill



Remove the top skin



705mm support board.



With the tube resting on the support board, check that the tube is above the instrument panel.



Do not drill the gusset to the side frame. Only drill the gusset to the tube..

Let the canopy determine the location of the gusset on the side frame.



Remove the panel side angle 65C1-1 and the bottom bracket 65C2-2



Drill off the rivet head, drive out the mandrel, push the rivet through.



Make a template or jig to hold the baggage bulkhead at the right angle.



Remove the outside handle for the canopy release.

The bubble canopy can now be positioned on the fuselage.